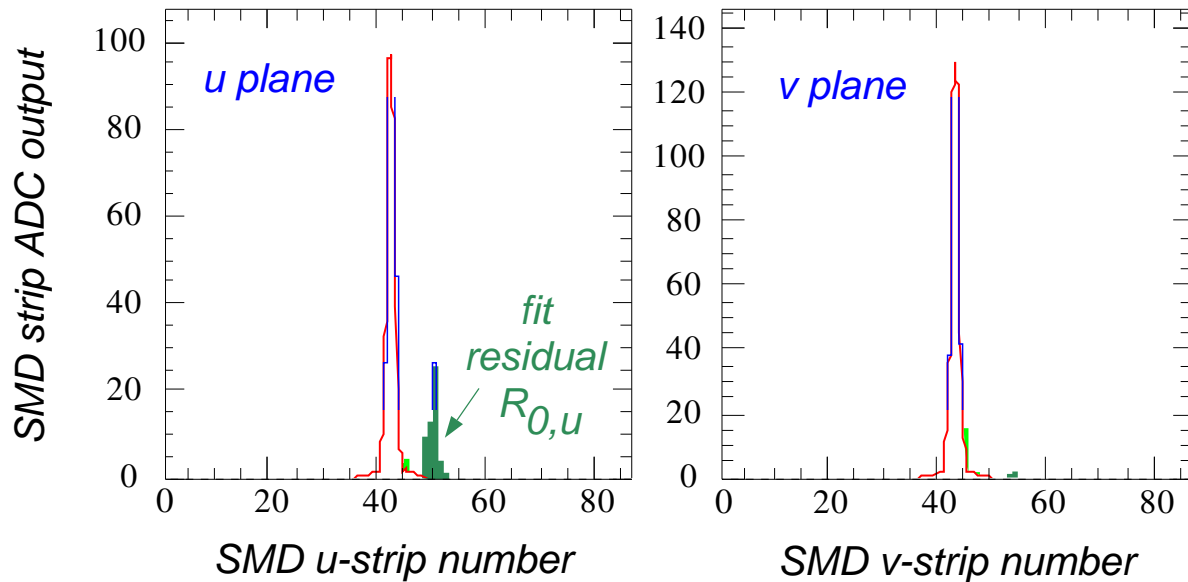
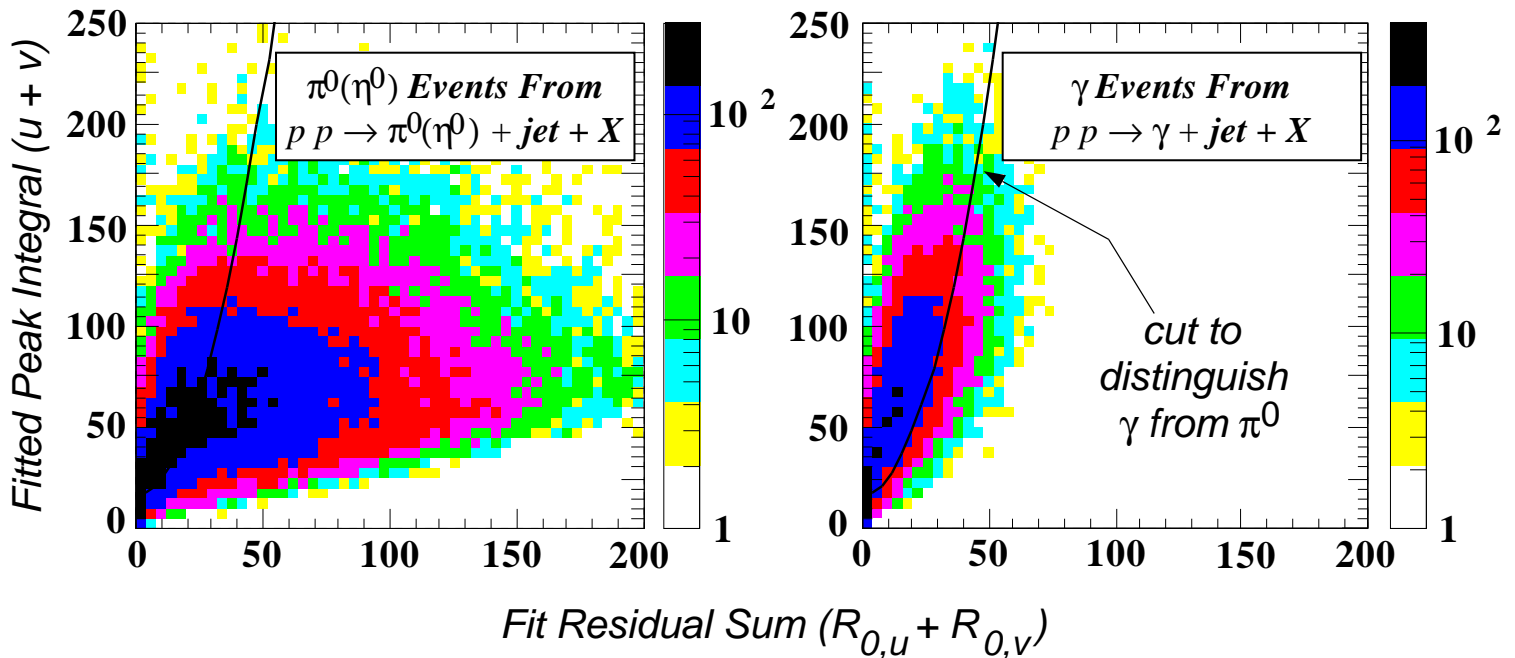


SMD γ / π^0 Discrimination Algorithm

SMD transverse shower profile for 30 GeV π^0 event



- fit transverse SMD profile with peak shape characteristic of average response to single γ
- determine peak integral and "worst-side" fit residual for each plane of SMD



$\Rightarrow \approx 80\% \pi^0(\eta^0)$ rejection $\oplus \approx 80\% \gamma$ retention up to $E \approx 50$ GeV