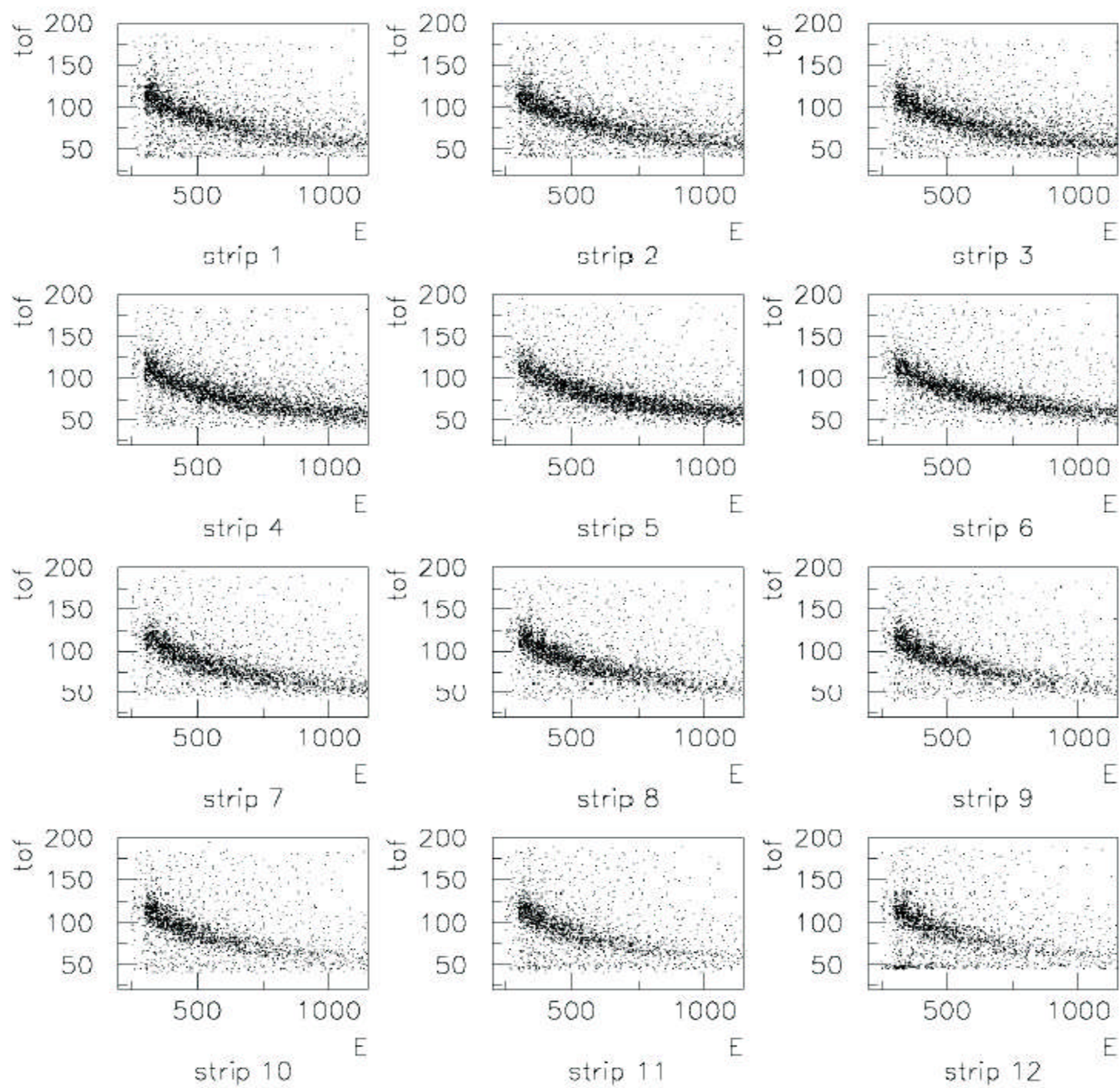
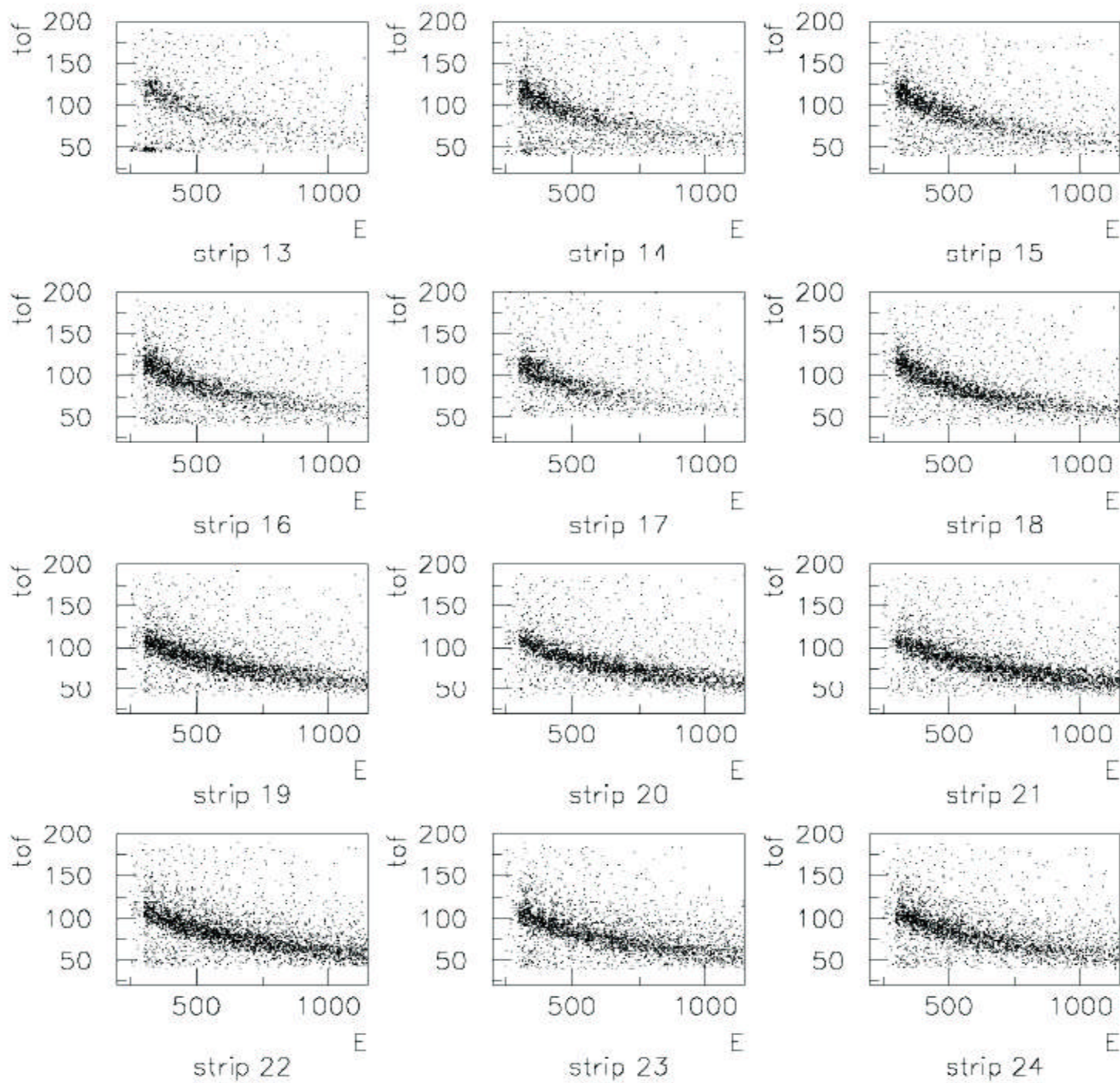


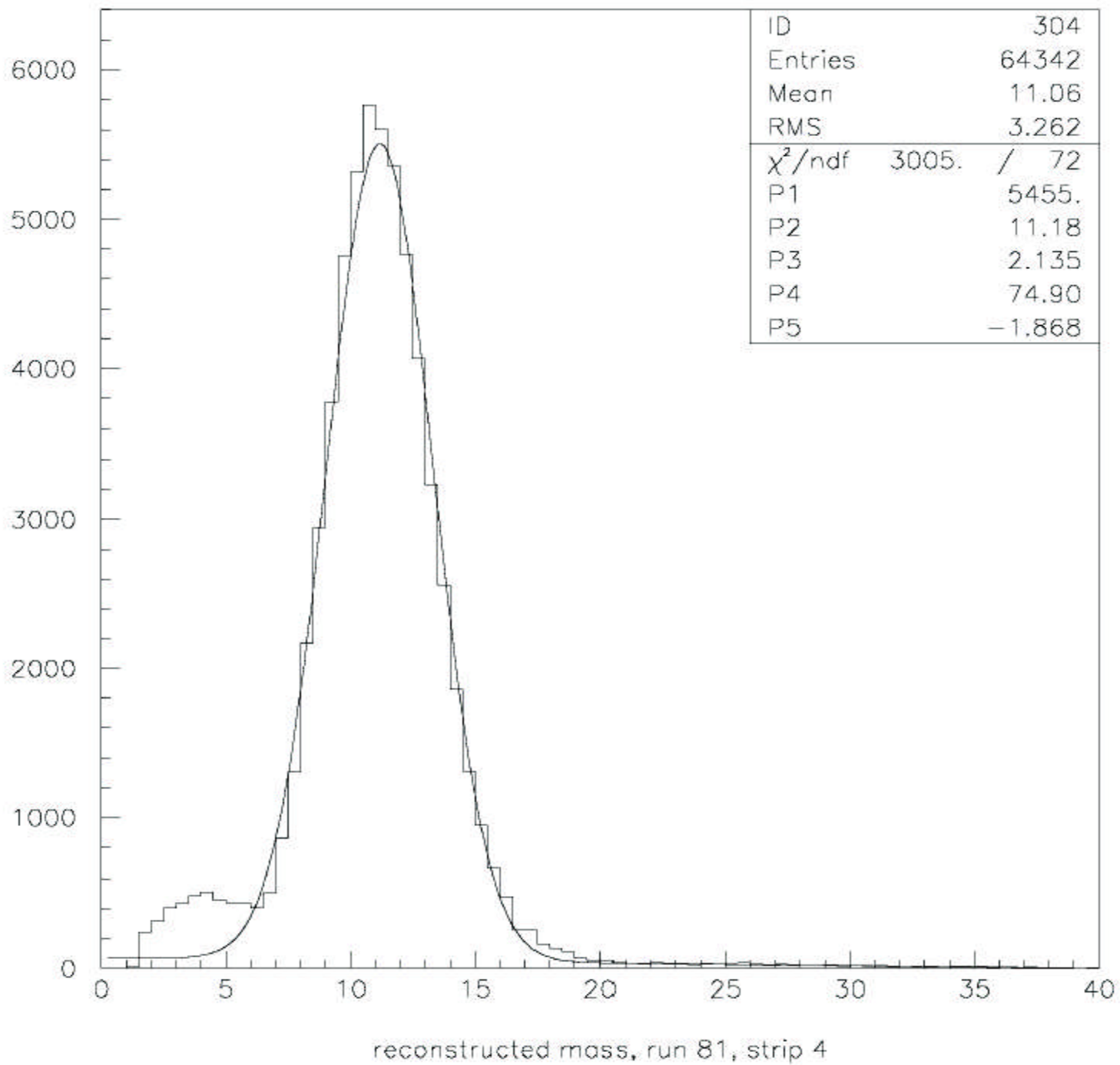
# CNI Polarimeter Status Report

1. A look at the data
2. Problem with timing algorithm
3. Plans

Jeff Wood, UCLA

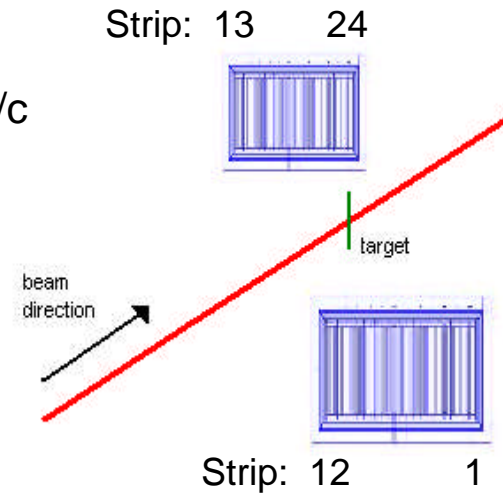
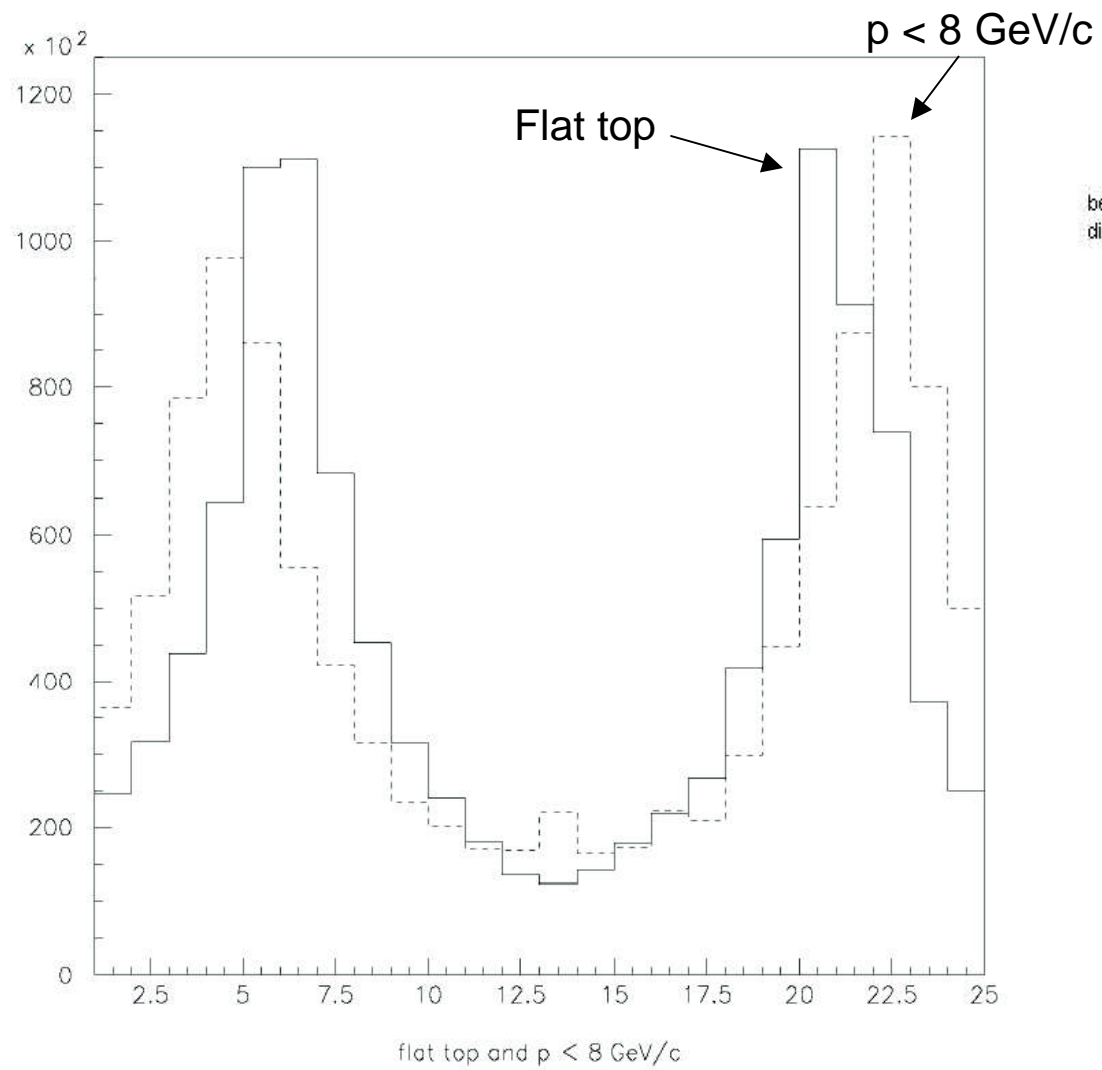






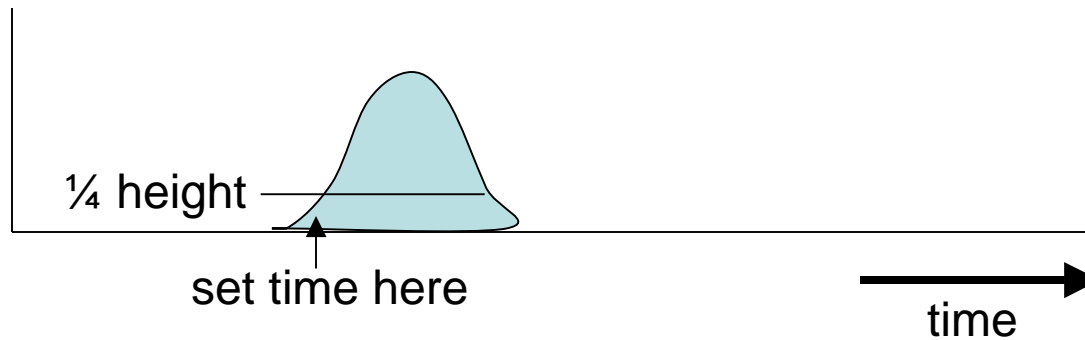


# strip distribution

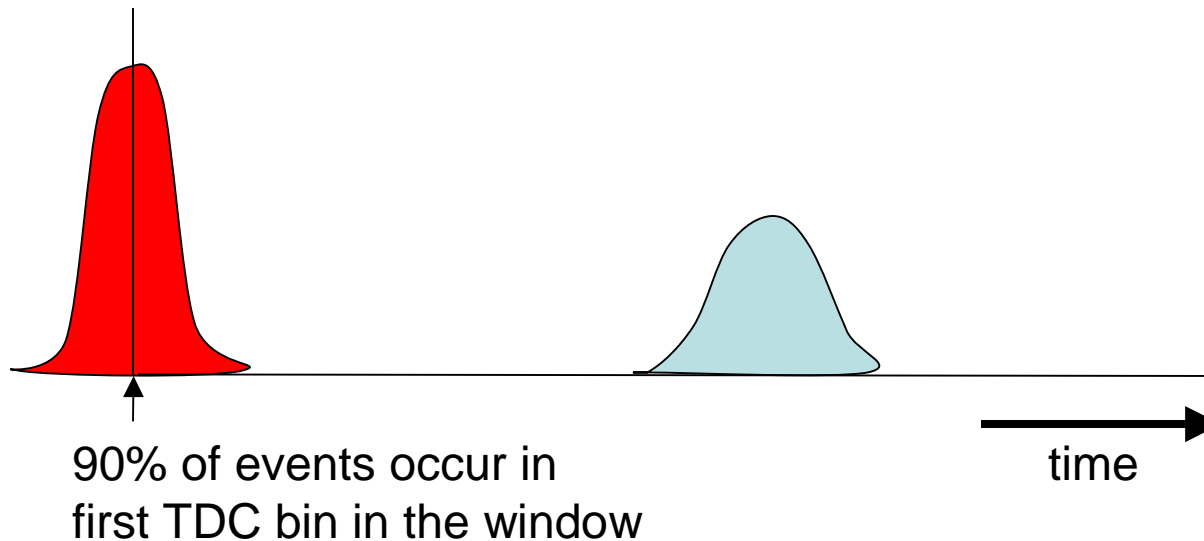


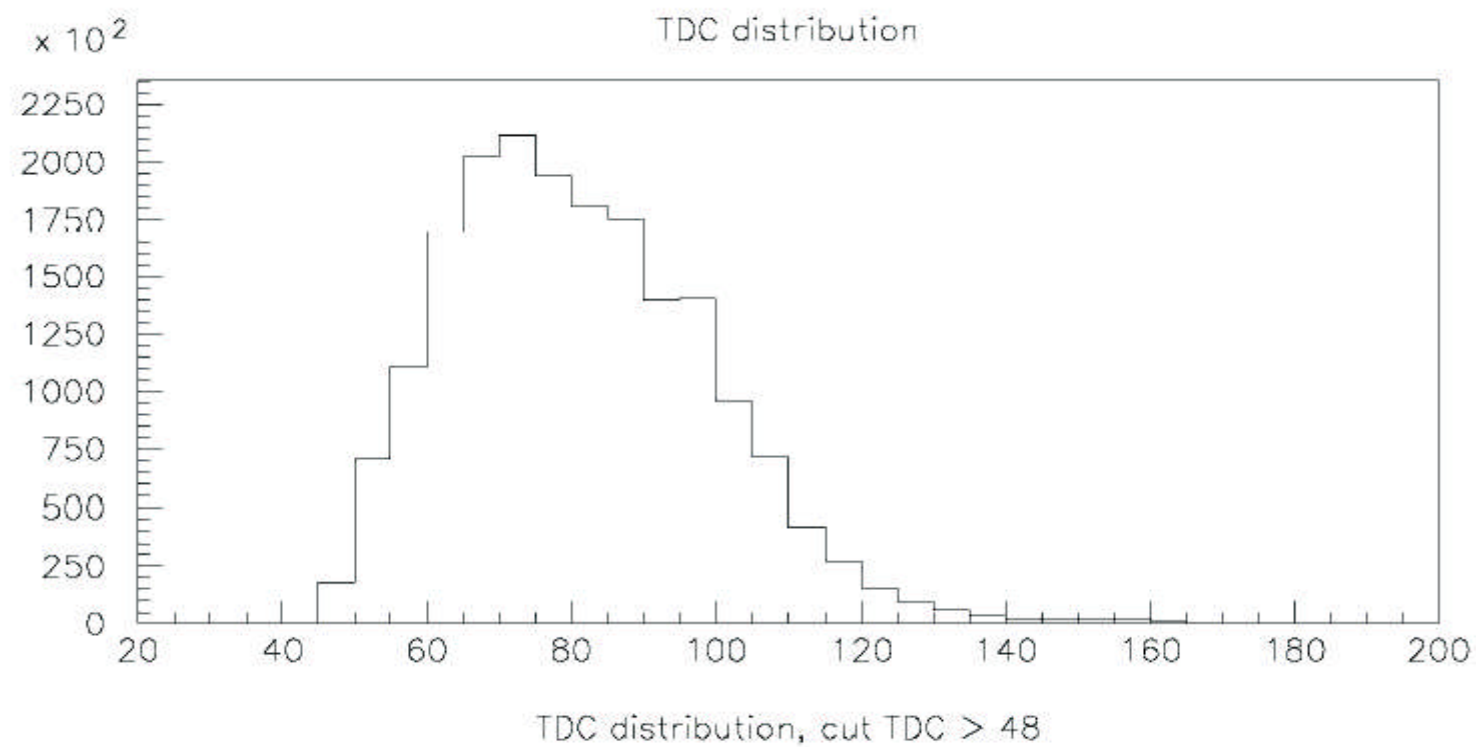
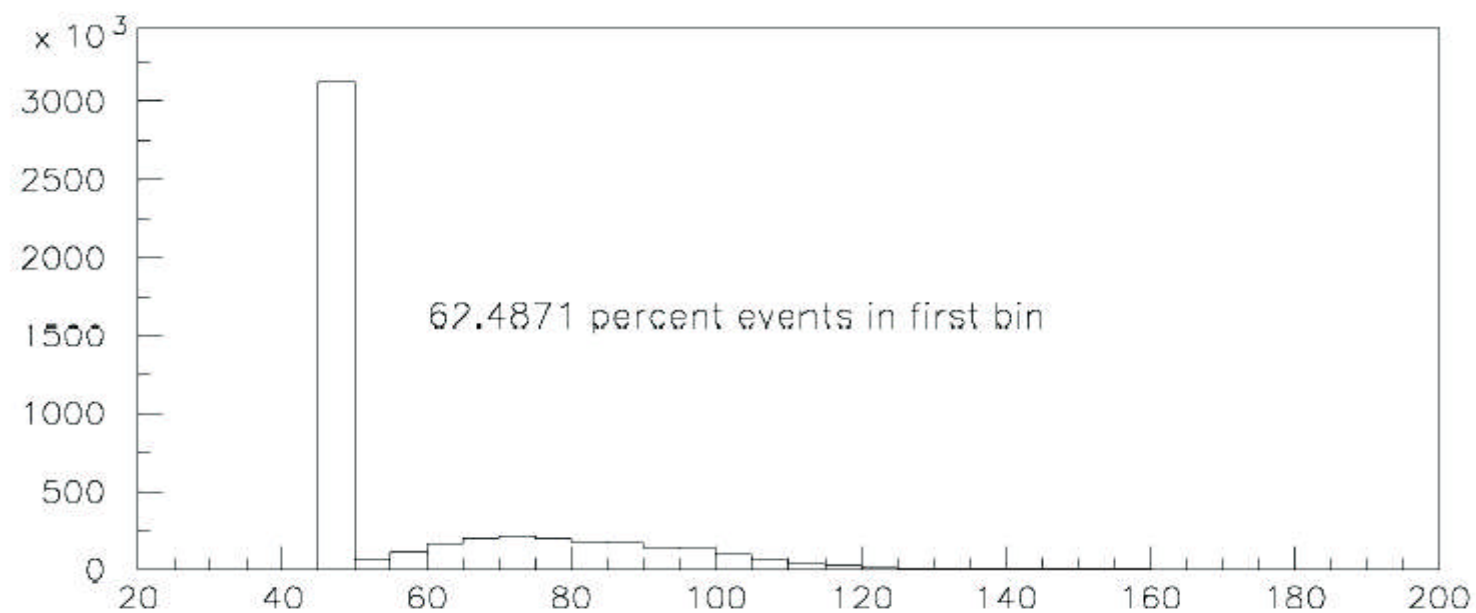
# timing algorithm

- find peak in sensitive time window
- look for  $\frac{1}{4}$  peak at an earlier time



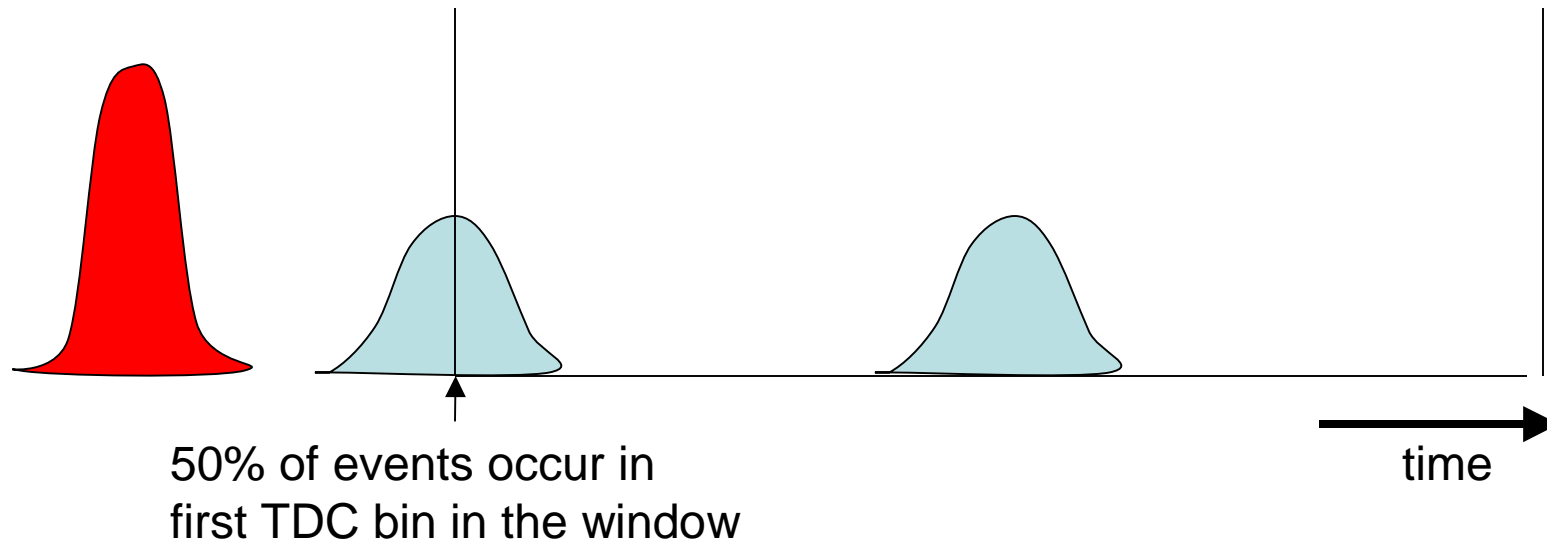
- Problem: pick up prompt background signal





## Temporary solution

- shift time window
- but still find wrong time for half events



- throw away half events that we record
- need to reprogram algorithm in WFDs



# Plan for near future

- Need to change timing algorithm
  - Dima and Igor's next visit
- Would like to try a flat top asymmetry measurement
  - Keep in contact with MCR for available beam