

How to look at RHIC CNI data

Osamu Jinnouchi

4/14/2004

To start up

- Login DAQ machine
 - Your remote pc> ssh e950pc.riken.bnl.gov -l e950
 - Your remote pc> password: (ask expert)
- Go to offline directory
 - prompt> cd pol2004-offl
- Startup application
 - prompt> rhicana.pl &

Then you will see the window pop up like next page

Choose run#

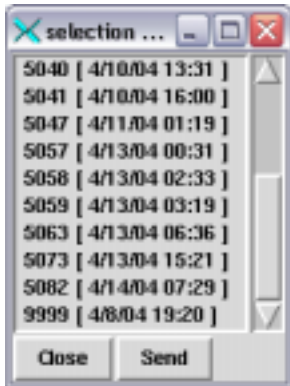
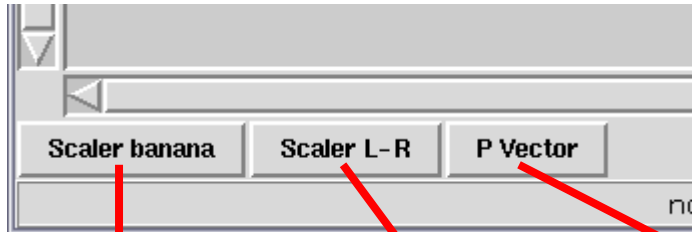


Fig A

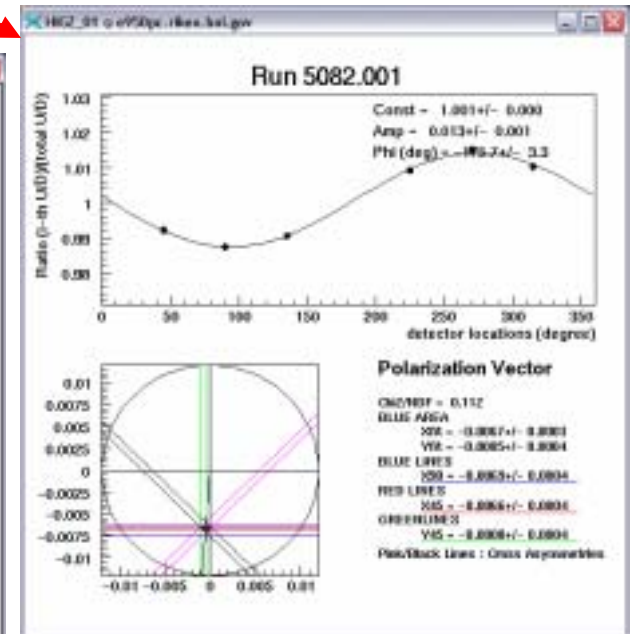
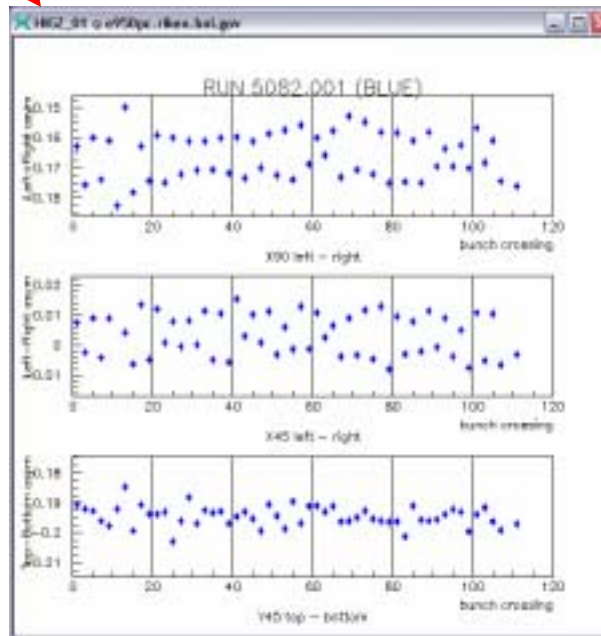
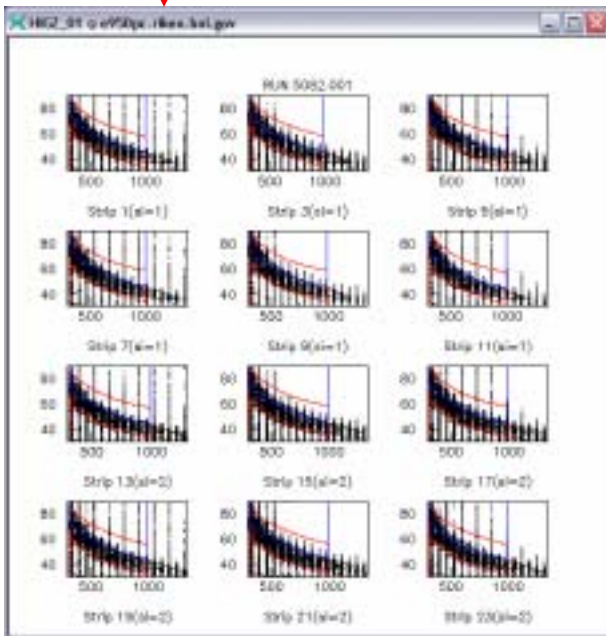
Fig B

- To choose run number, you do not need to look at directory nor elog
- If you click on “Fill” button, the list of fills will be pop up (fig A) the latest fill is located at the bottom. Choose one of the lines and click “Send”, then the fill number in the main window updates (then click “close” to close small window)
- After you select the fill, you can choose the run number among the selected fill, click “run” button then you will see the run list (fig B)
- The blue measurements are numbered (1,2,3...) yellow measurements are (101,102,103...)
- A character at the each line end indicates the data mode
 - “S” -- Scaler mode
 - “E” – Event mode

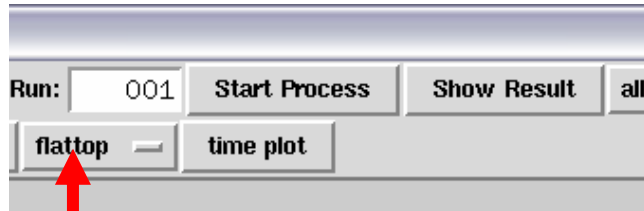
Check the plots for Scaler data



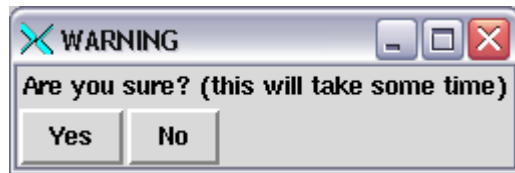
- “Scaler banana” shows the actual cut condition in WFD Look Up Table
- “Scaler L-R” shows the Left Right asymmetry (plus bunch crossing distribution, strip distribution)
- “P vector” the relations between the various asymmetry visually



Process the event-mode data

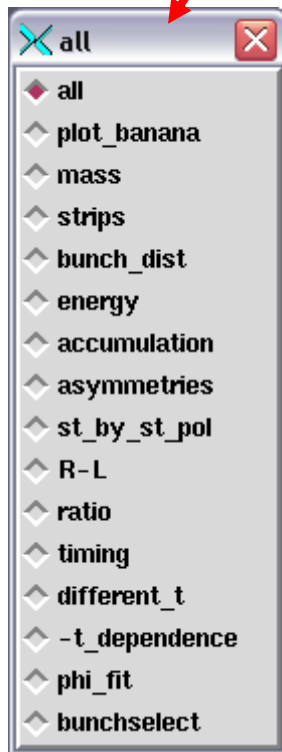
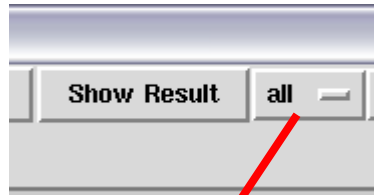


button A



- Let's try "Show result" button, and if you see the flashing window and if you are sure the run is event mode, it means the data is not processed to HBOOK format
- You need to process the raw data, but before doing that, you need to specify the beam energy (button A) by toggling between "flattop" or "injection" (**very important**)
- Then click "Start Process". It takes a while, so the warning window show up once. If you do not want to process, you can cancel with "No"
- During the process, the main window will be freeze, but don't worry! The process has lowest priority and should not affect other activities
- After the processing, you will see the text result in the main window

See the result of event-mode data



- If you want to go through all the plots, leave the menu as “all” and click “Show Result”
- When you want to go to next page (plot), type return on the xterm window, which show up with PAW graphical window
- When you want to quit “all”-mode on the way, type “q” and return on the xterm
- You can also choose the plot individually from menu. Click on “all” button and toggle one item from the menu, then click “Show Result”
- The button “ramp off”, ”time plot” are not implemented so far. Just ignore

