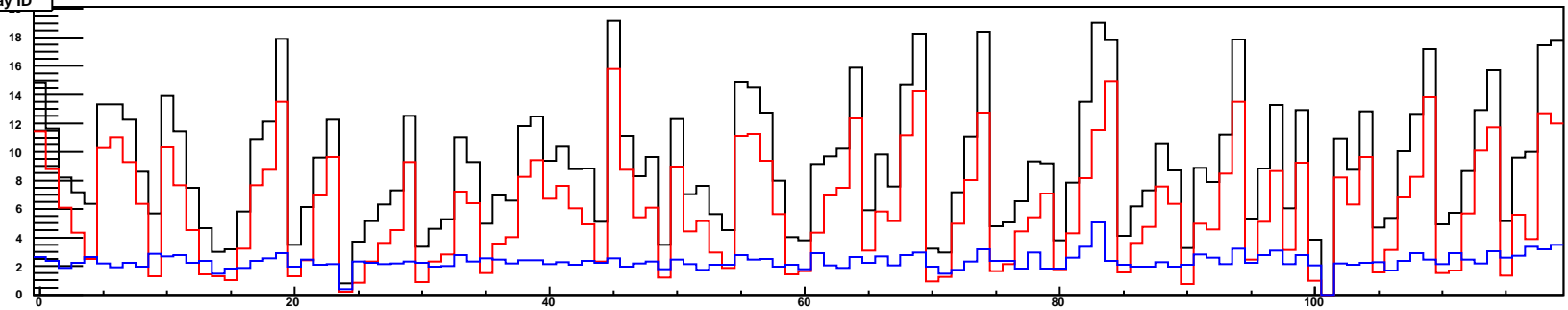
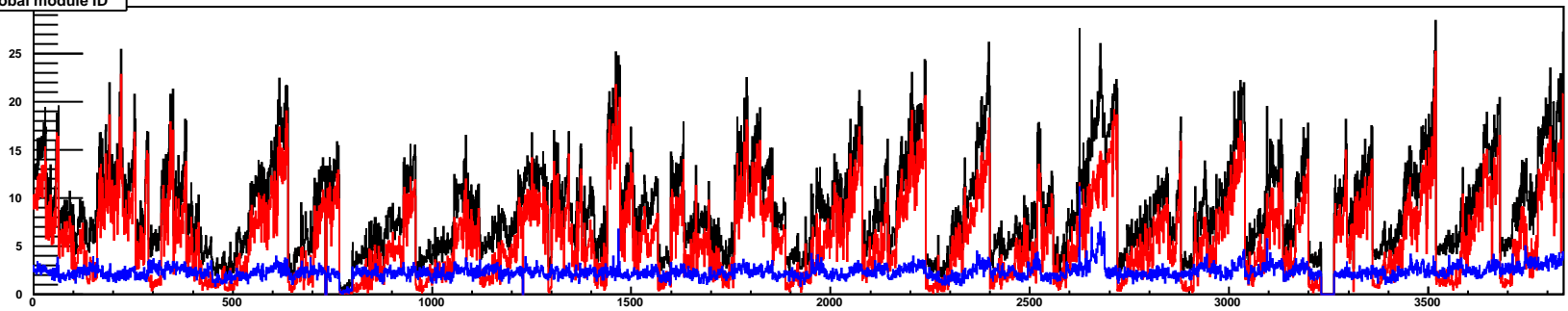


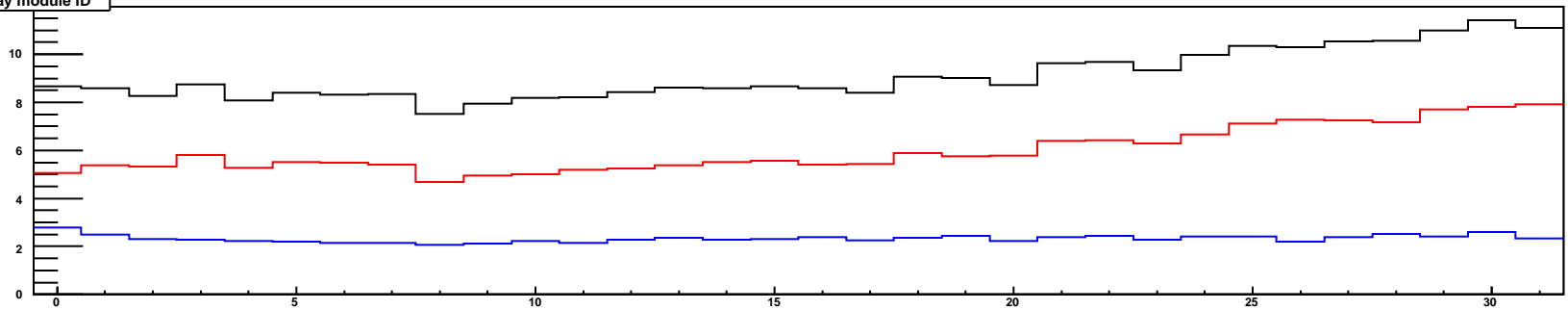
rate/cell by tray ID



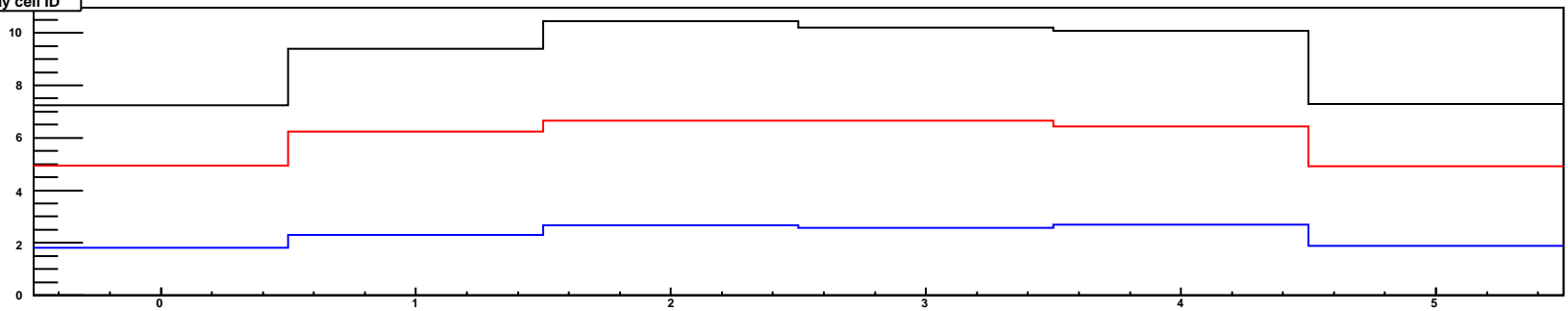
rate/cell by global module ID

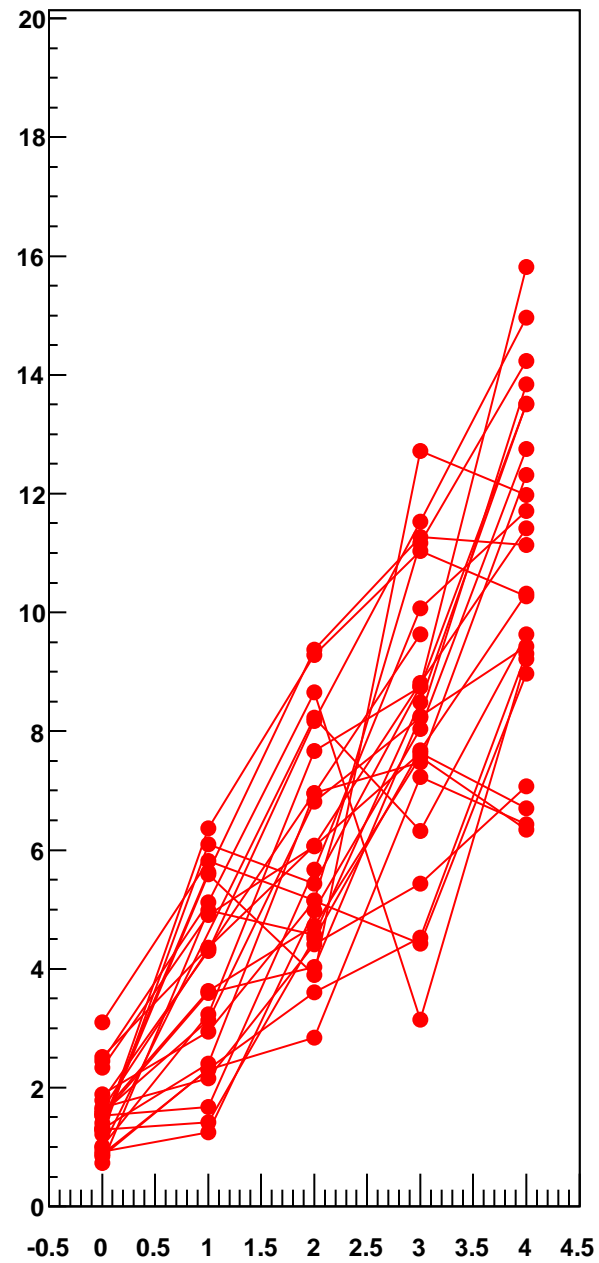
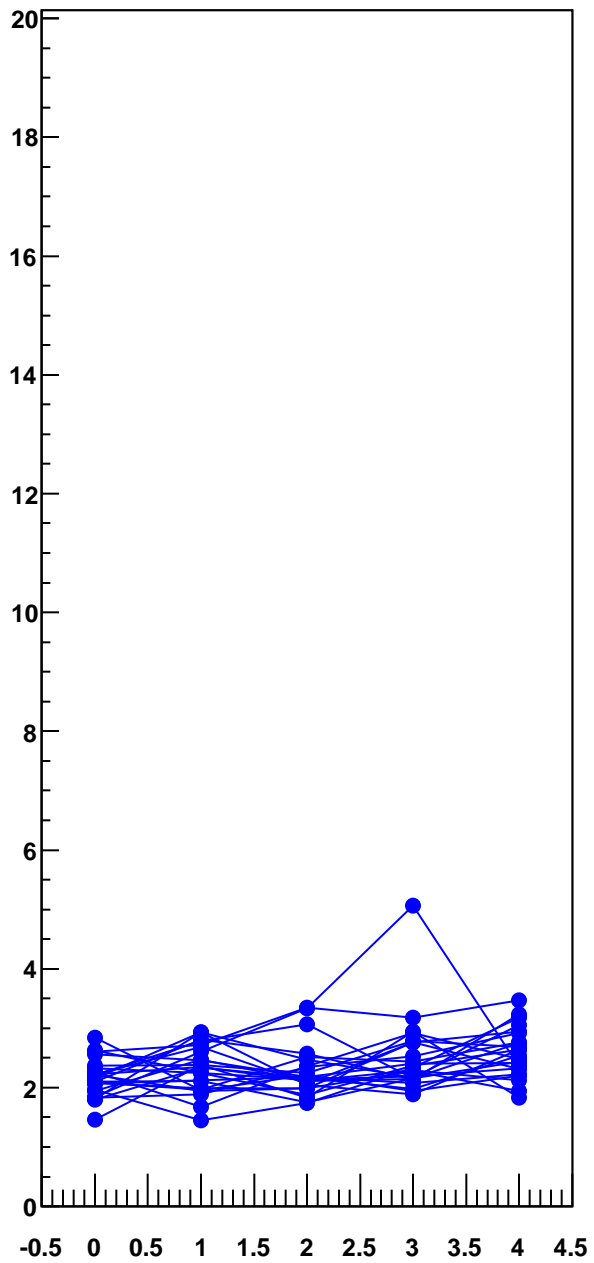
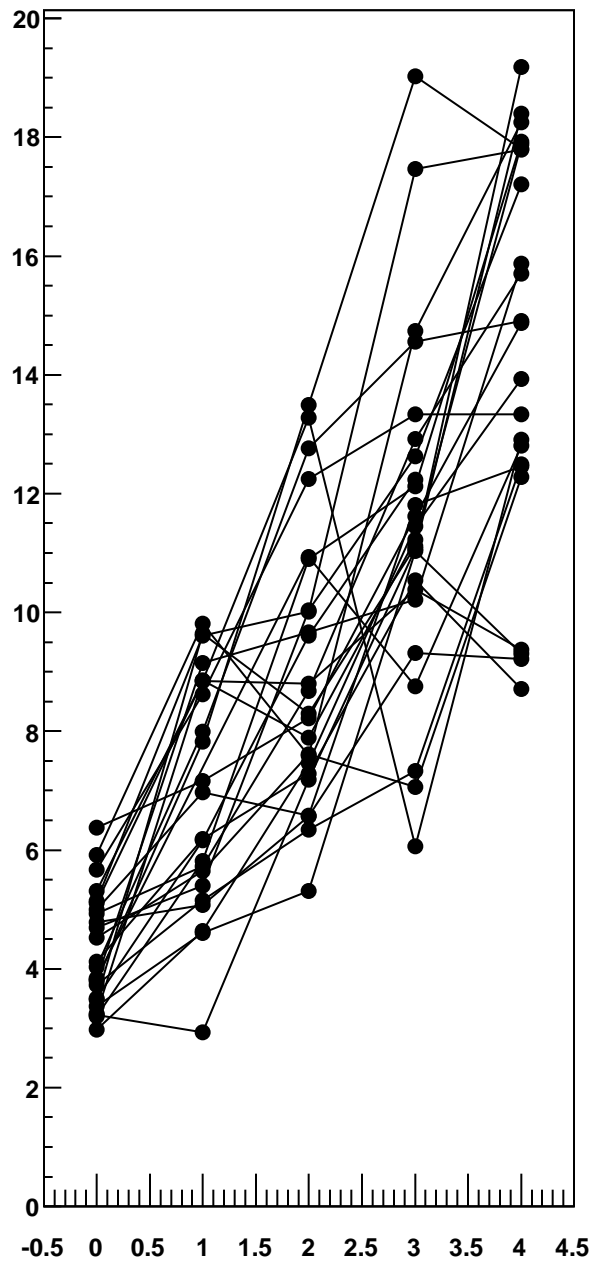


rate/cell by tray module ID

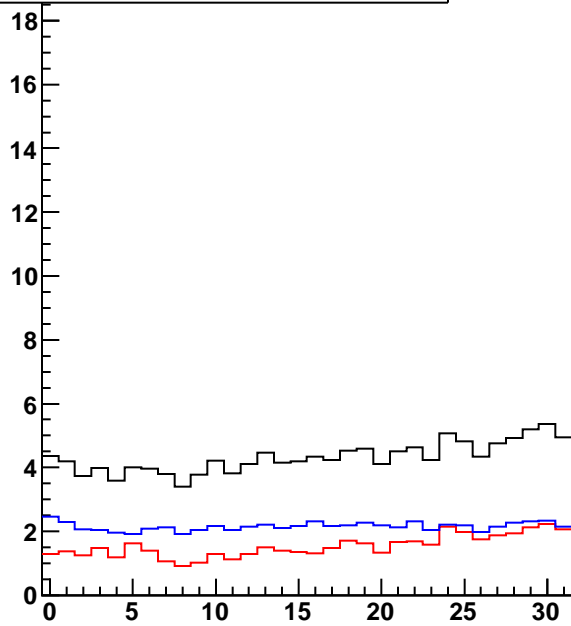


rate/cell by tray cell ID

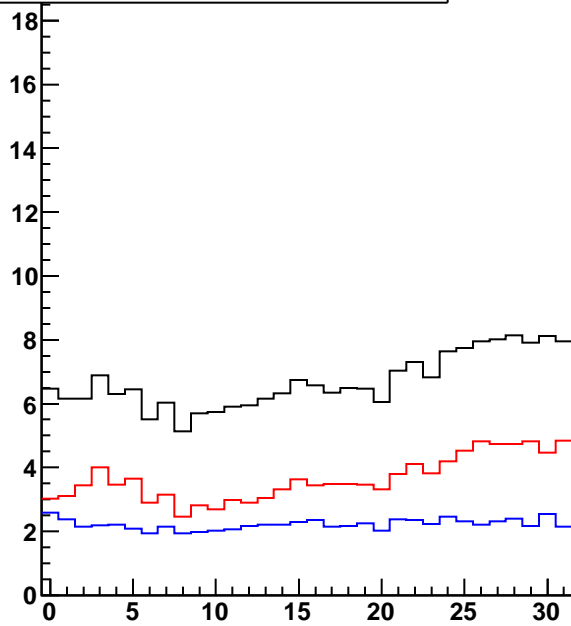




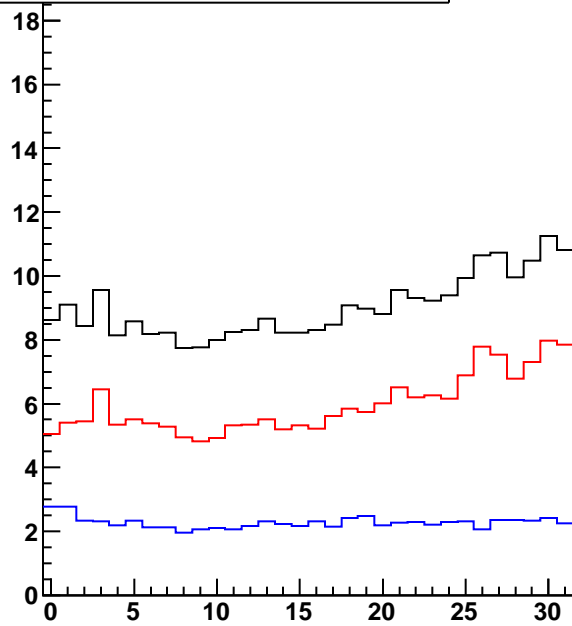
rate/cell by tray module ID, TrayIDinLoop=0



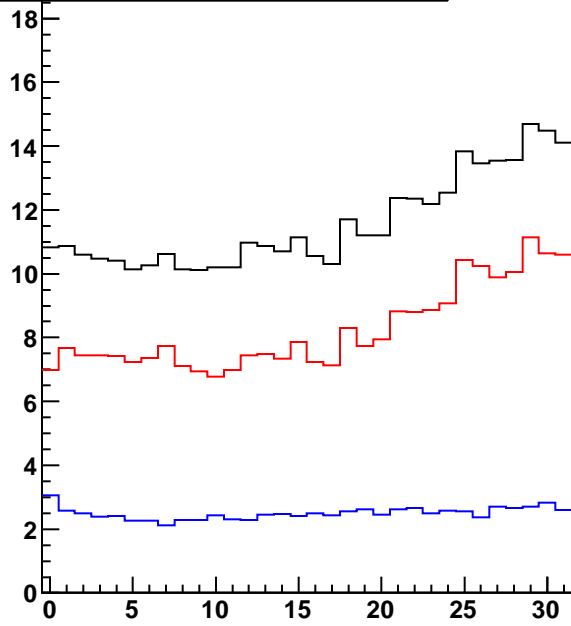
rate/cell by tray module ID, TrayIDinLoop=1



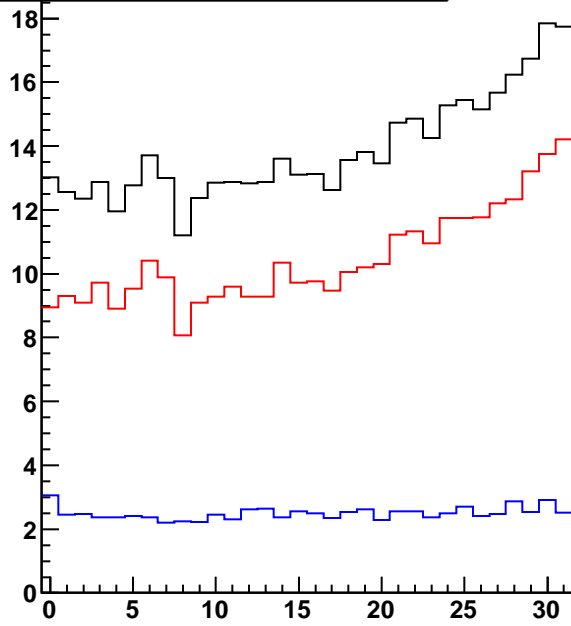
rate/cell by tray module ID, TrayIDinLoop=2



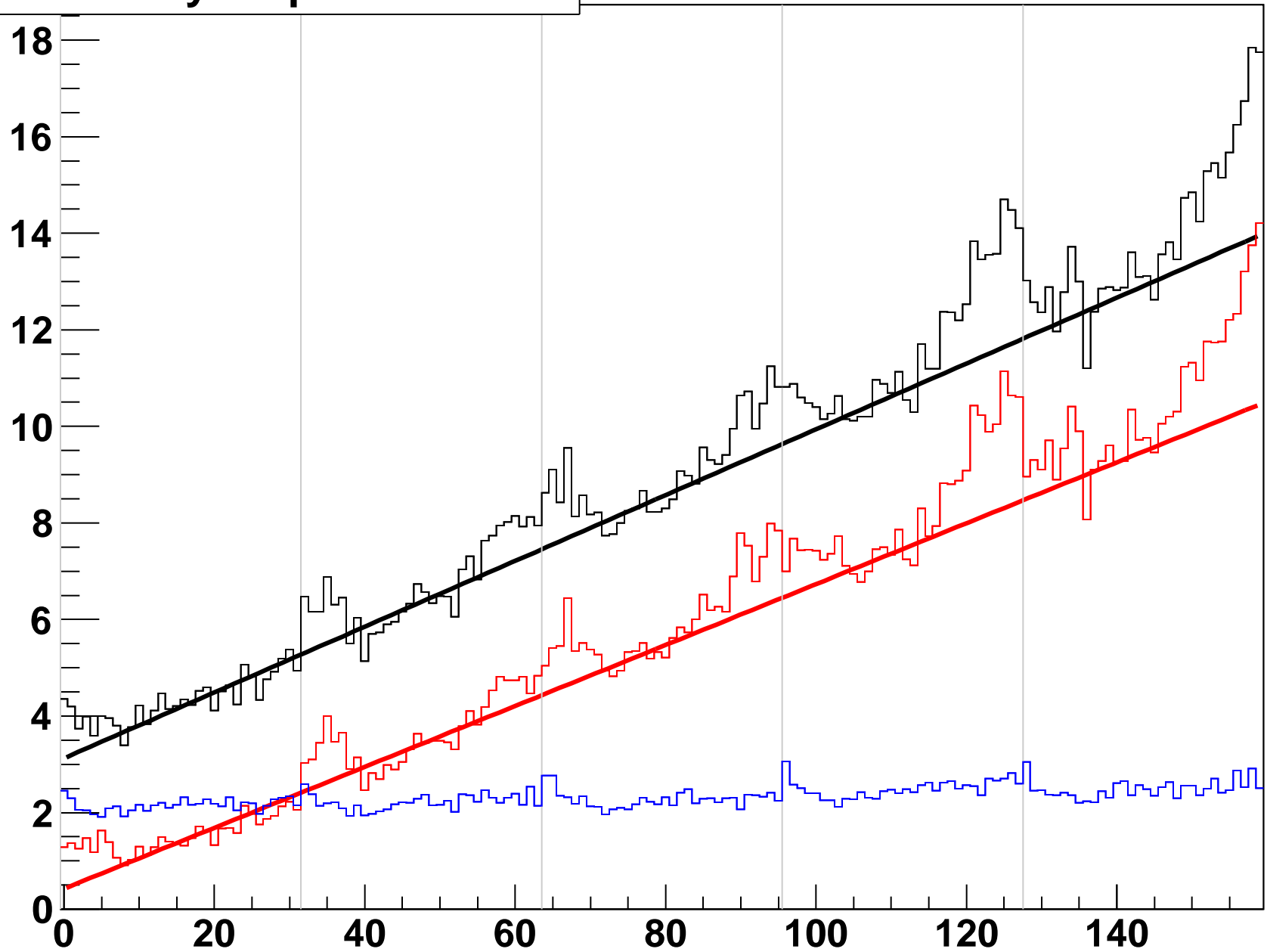
rate/cell by tray module ID, TrayIDinLoop=3



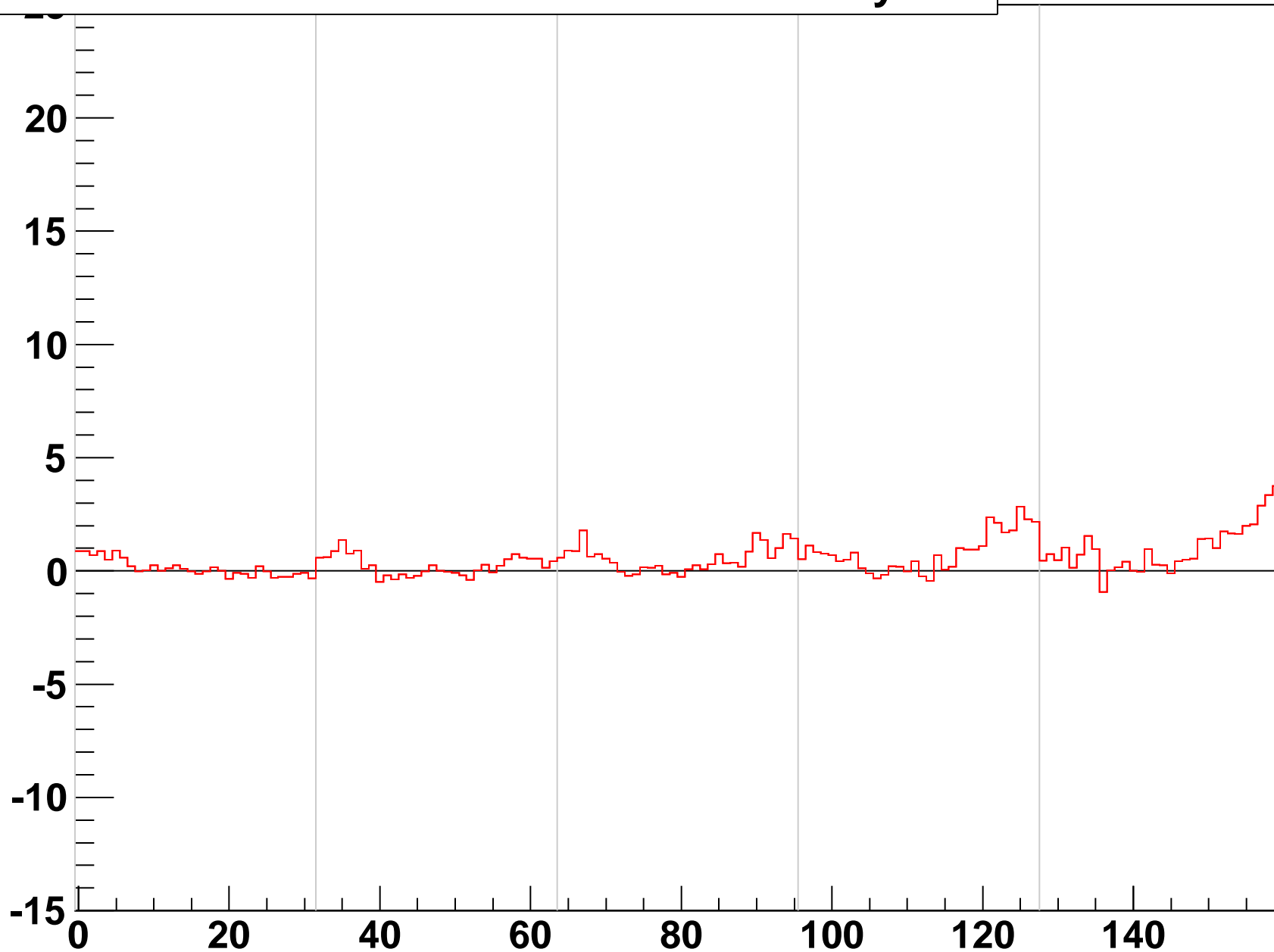
rate/cell by tray module ID, TrayIDinLoop=4



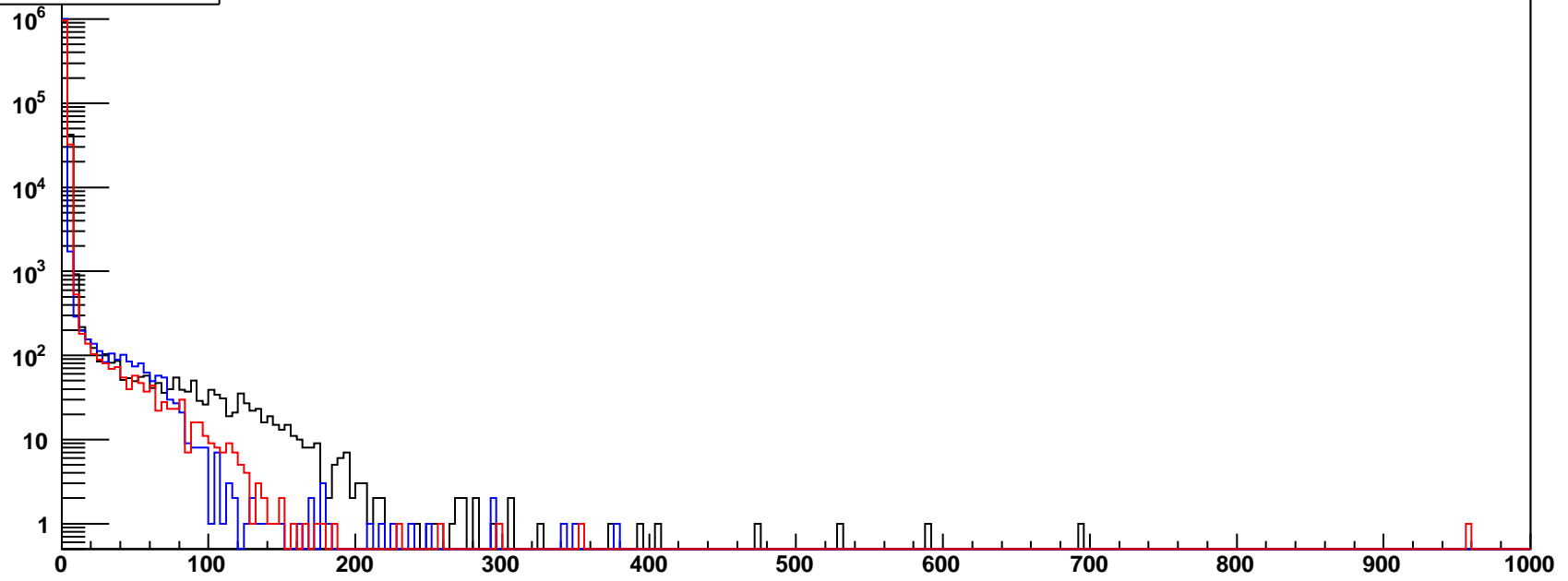
rate/cell by loop module ID



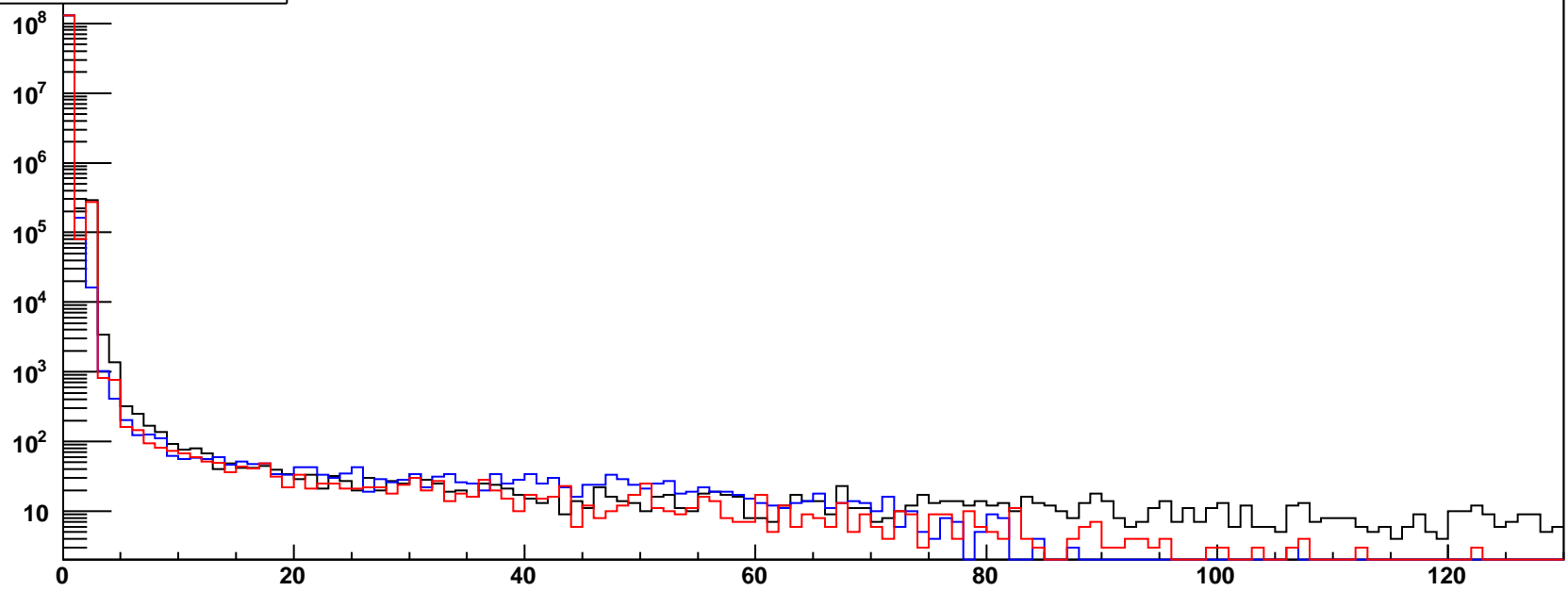
difference between noise rate and mid-tray fit



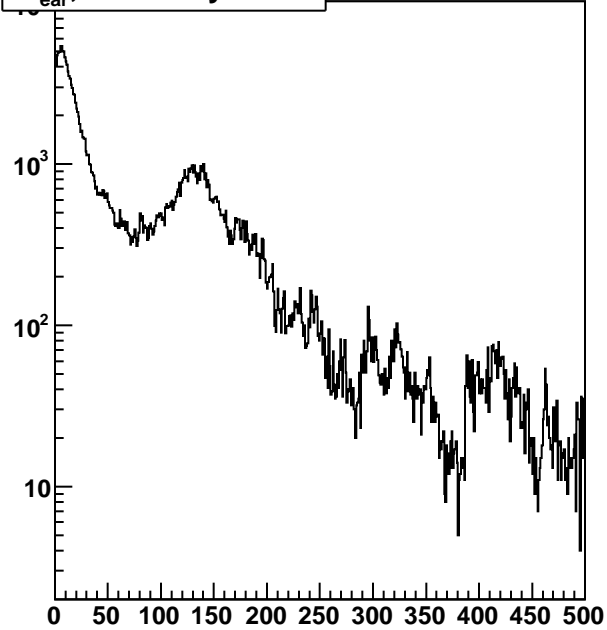
nHits/ev, ToT range



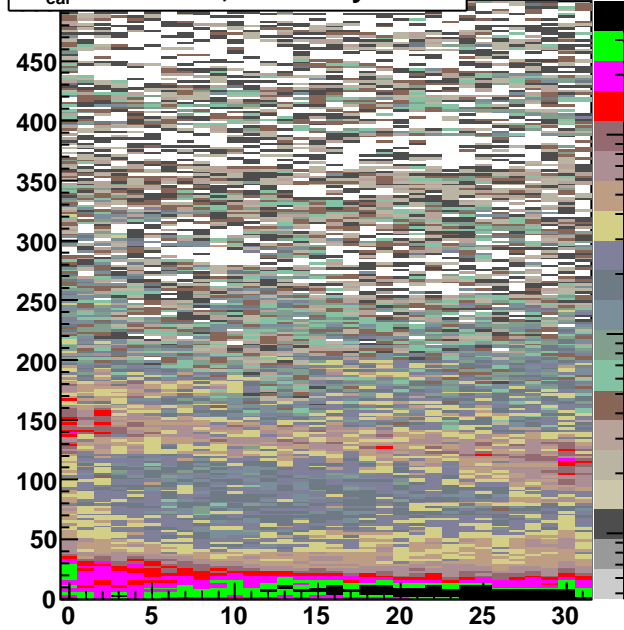
nHits/tray/ev, ToT range



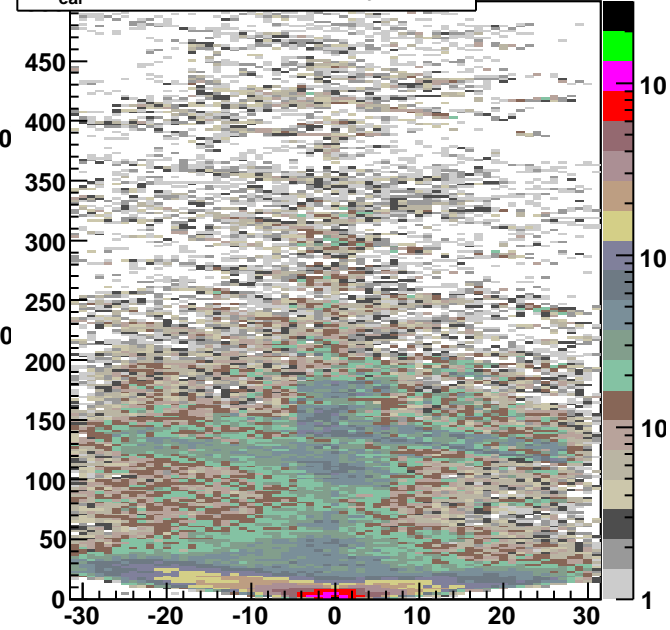
$t-t_{\text{ear}}, n\text{Hits}/\text{tray}/\text{ev}>25$



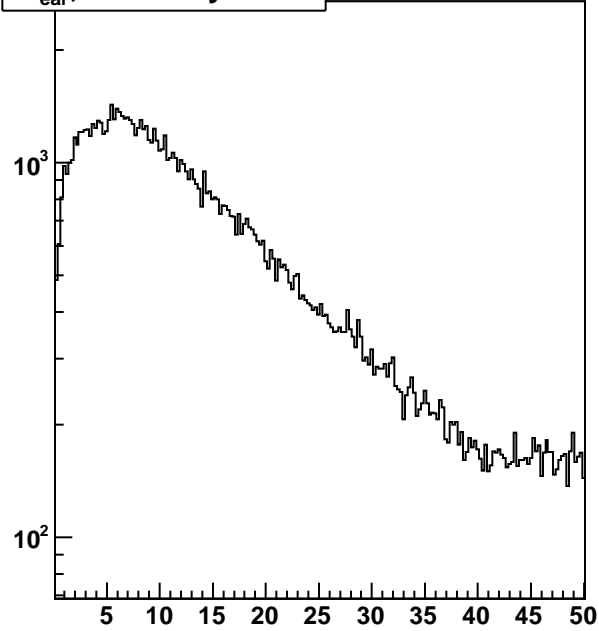
$t-t_{\text{ear}}$ vs module, $n\text{Hits}/\text{tray}/\text{ev}>25$



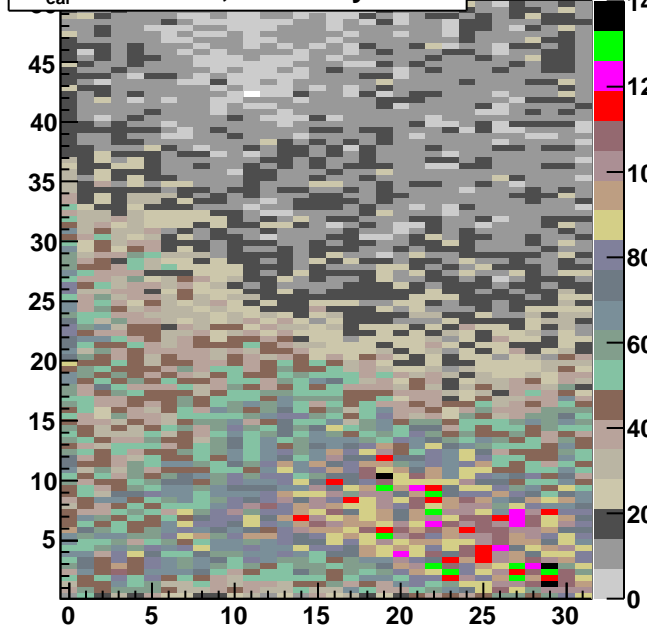
$t-t_{\text{ear}}$ vs rel module, $n\text{Hits}/\text{tray}/\text{ev}>25$



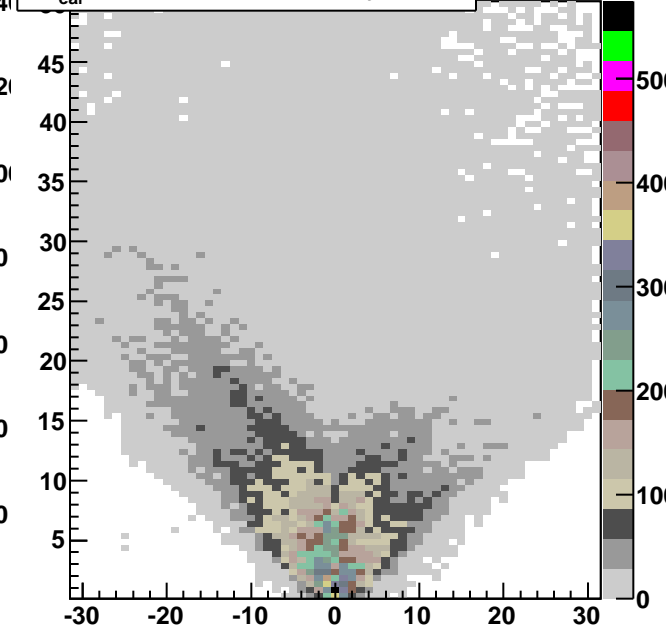
$t-t_{\text{ear}}, n\text{Hits}/\text{tray}/\text{ev}>25$

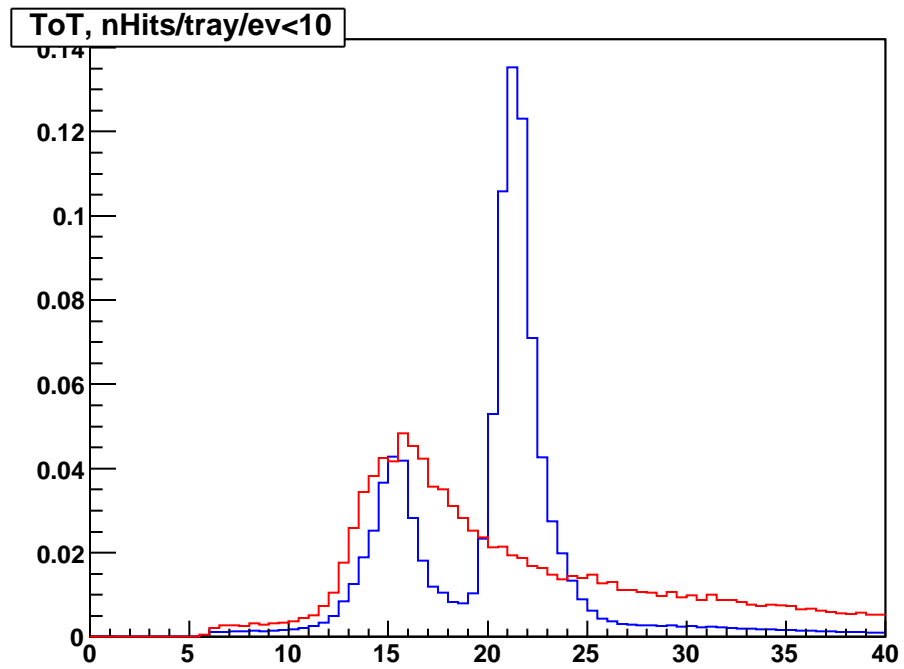
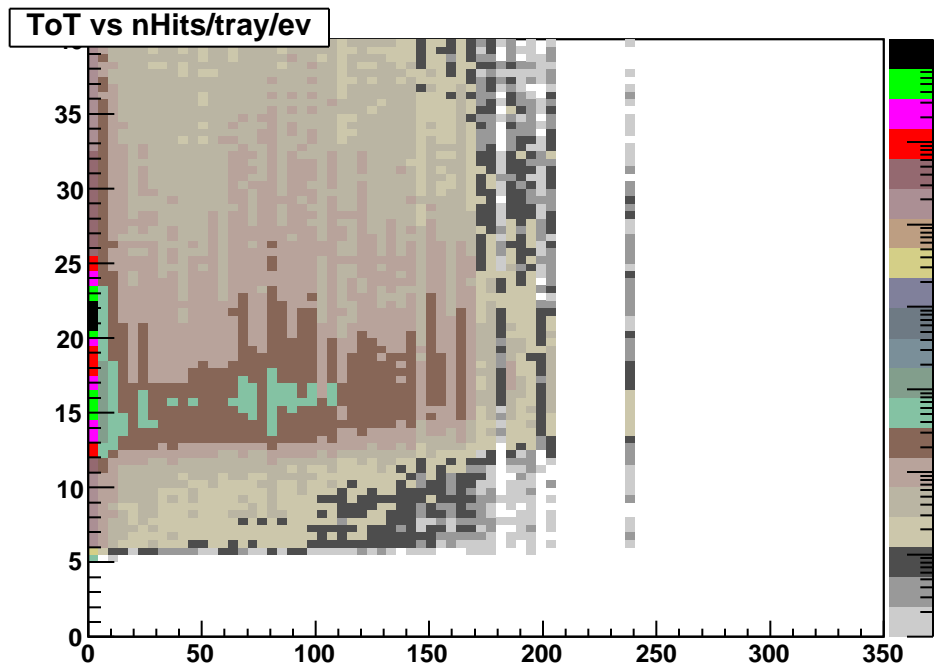
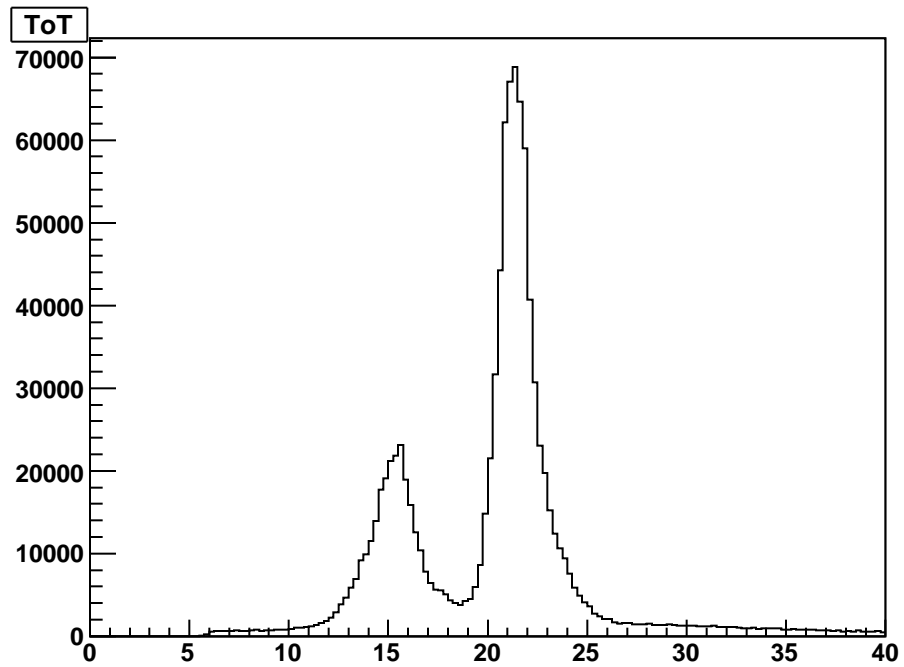
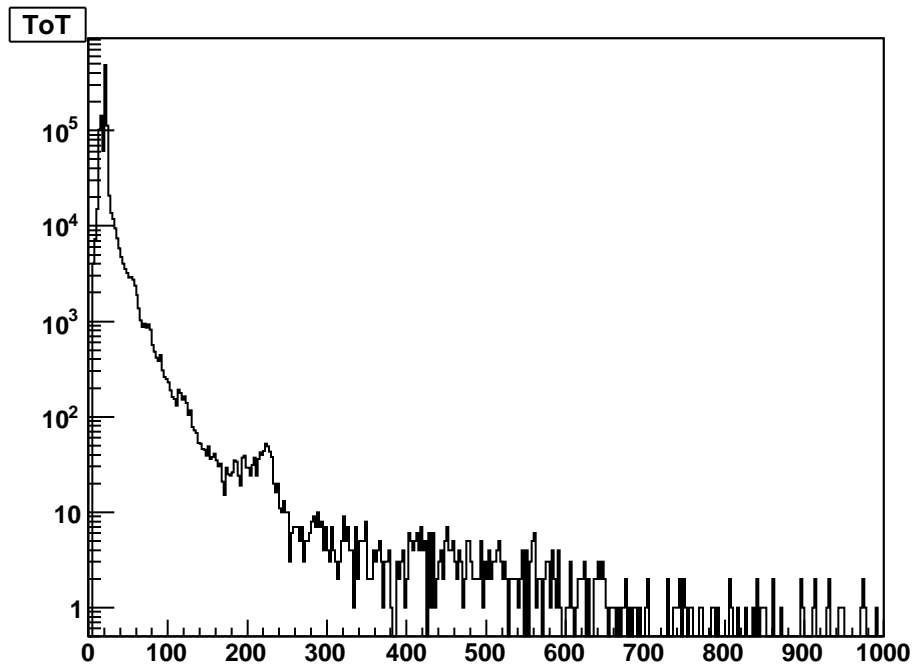


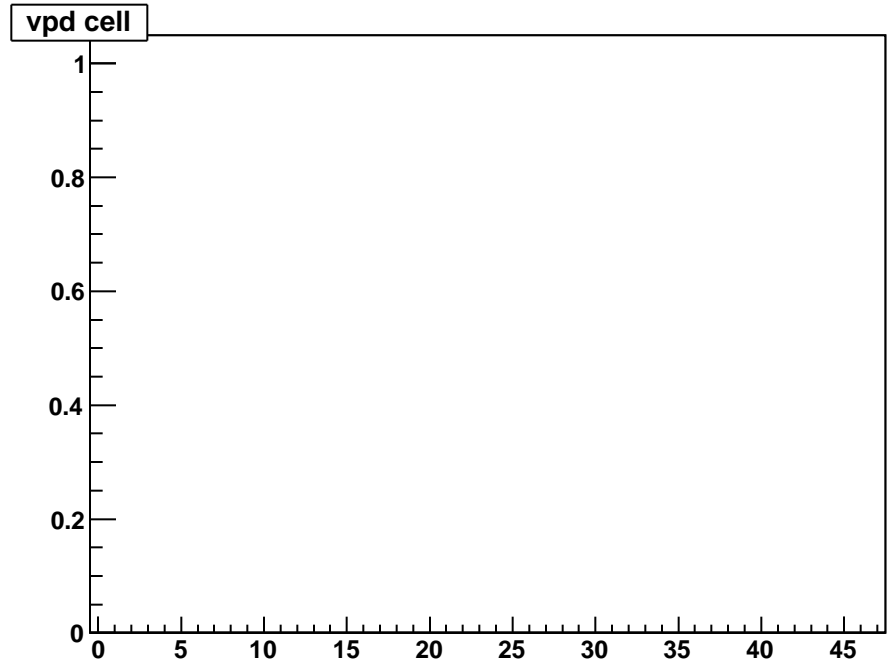
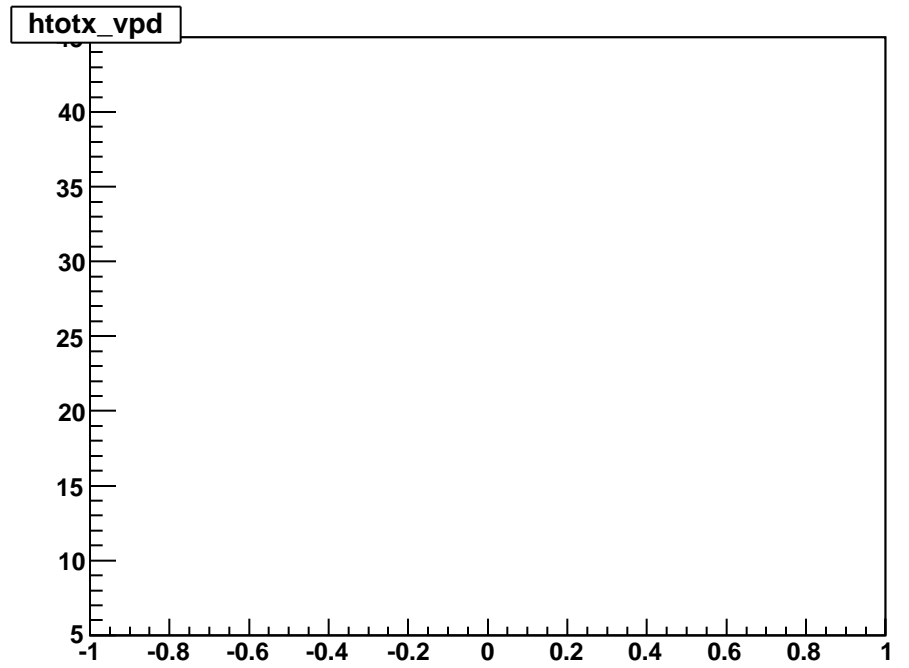
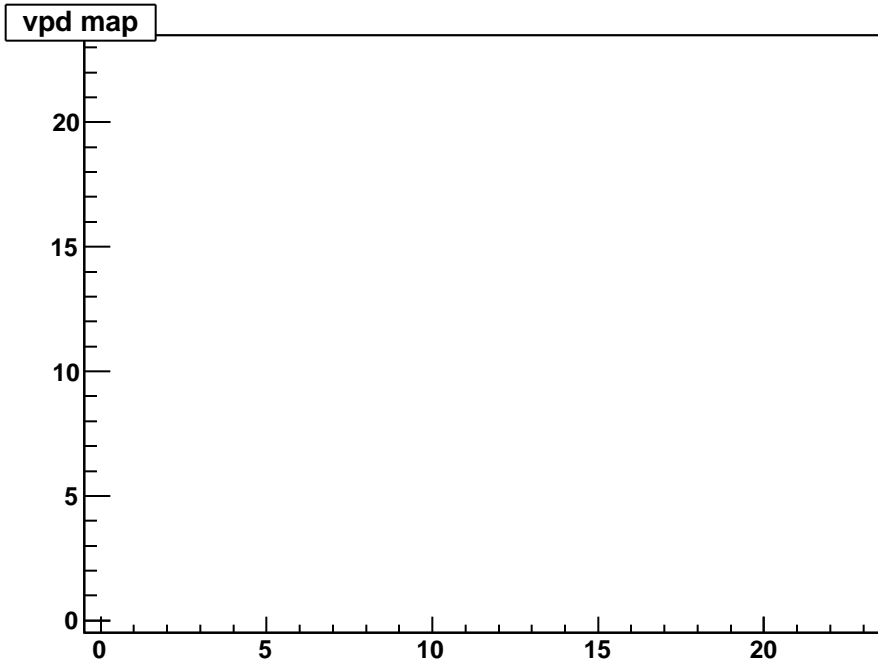
$t-t_{\text{ear}}$ vs module, $n\text{Hits}/\text{tray}/\text{ev}>25$



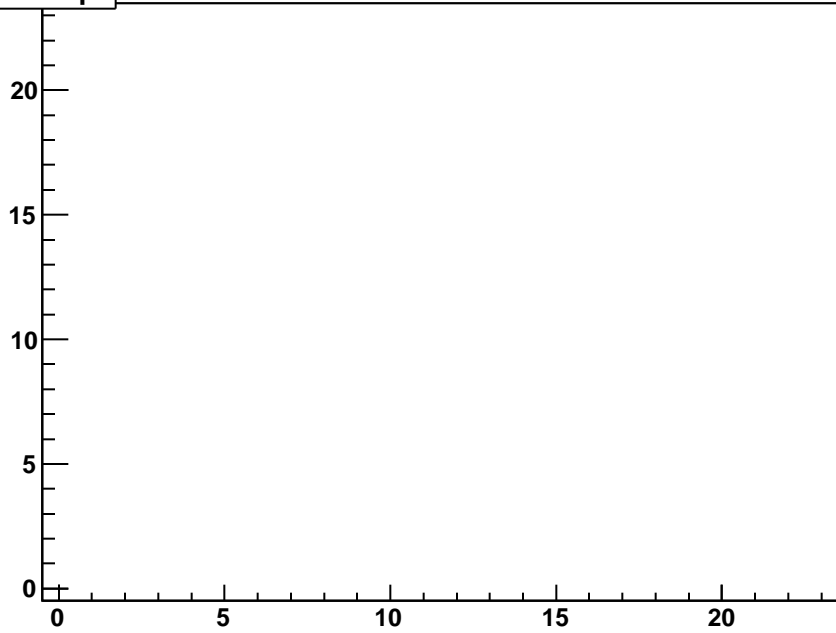
$t-t_{\text{ear}}$ vs rel module, $n\text{Hits}/\text{tray}/\text{ev}>25$



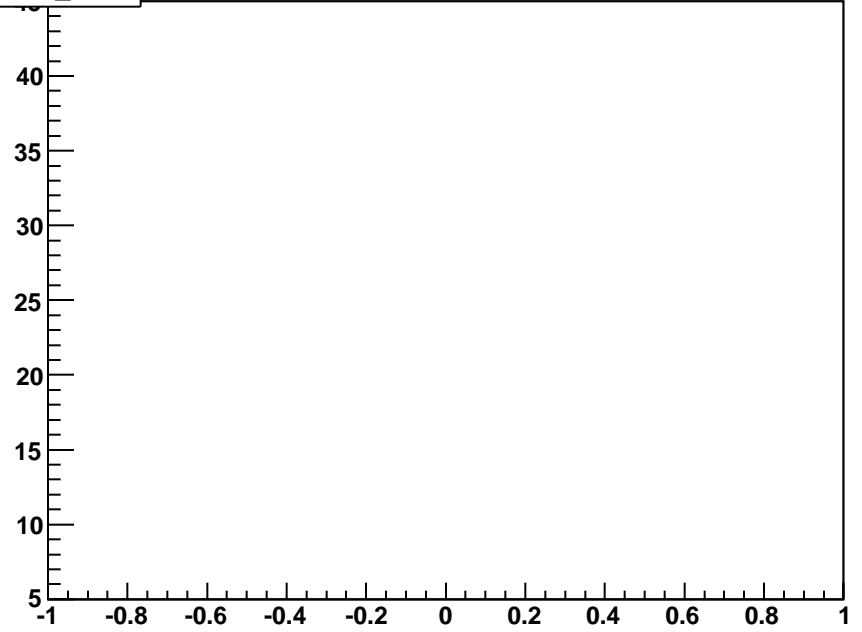




mtd map



htotx_mtd



mtd cell

