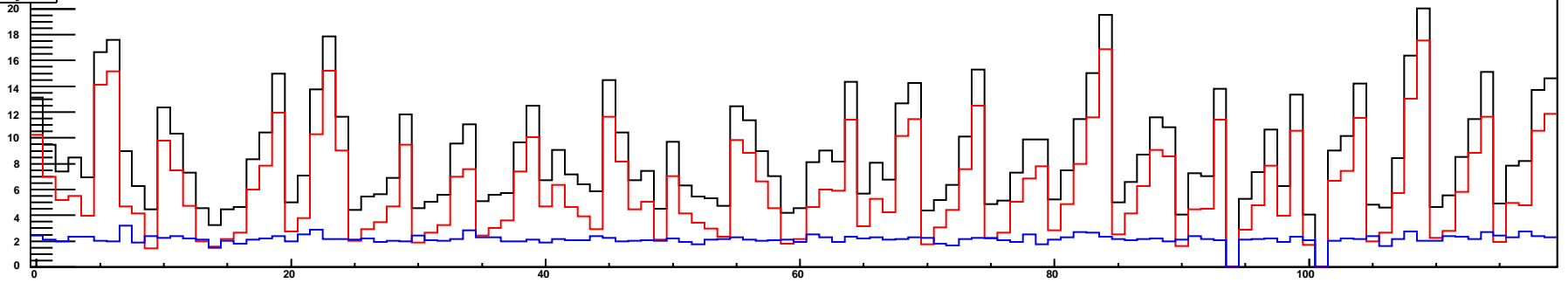
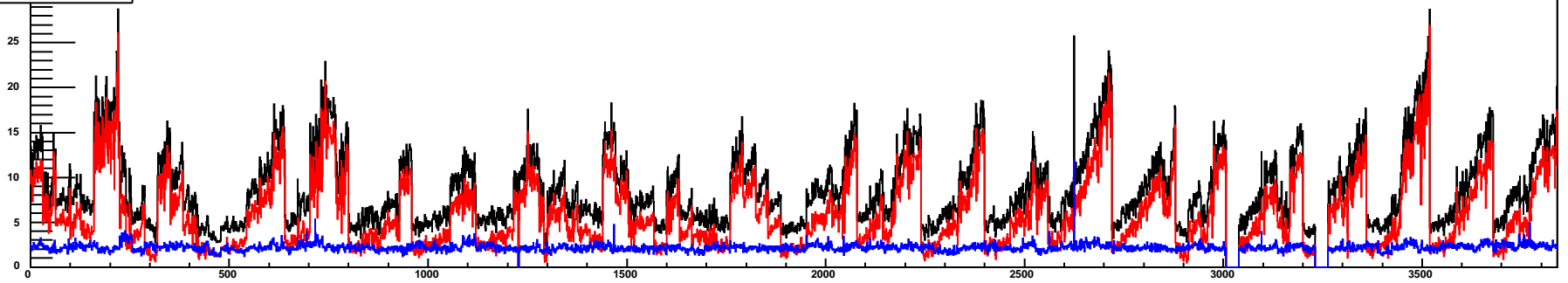


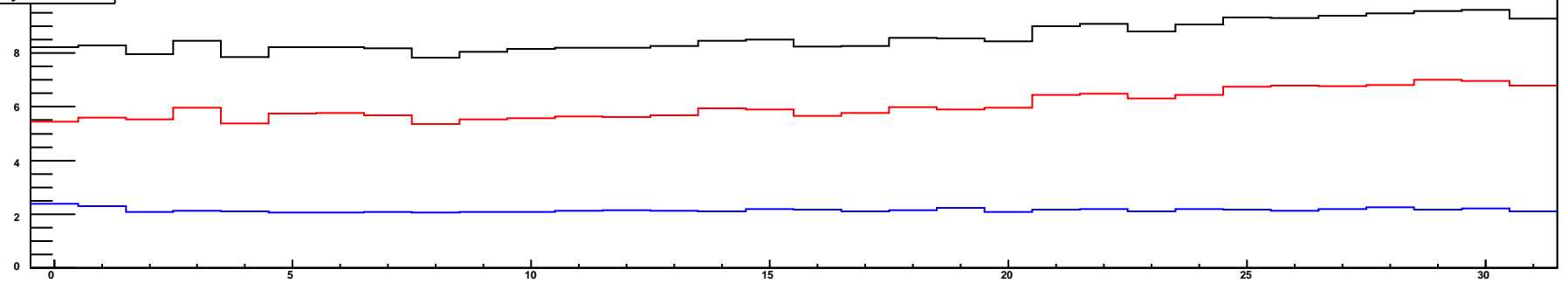
rate/cell by tray ID



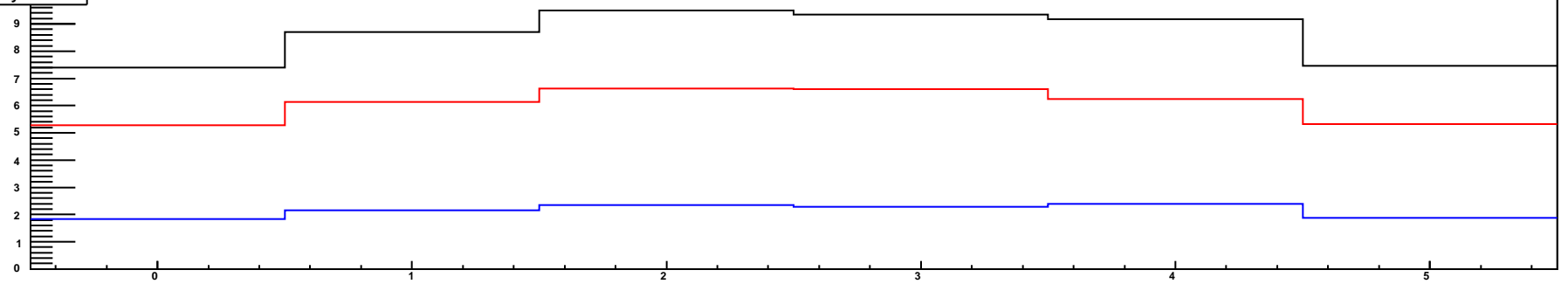
rate/cell by global module ID



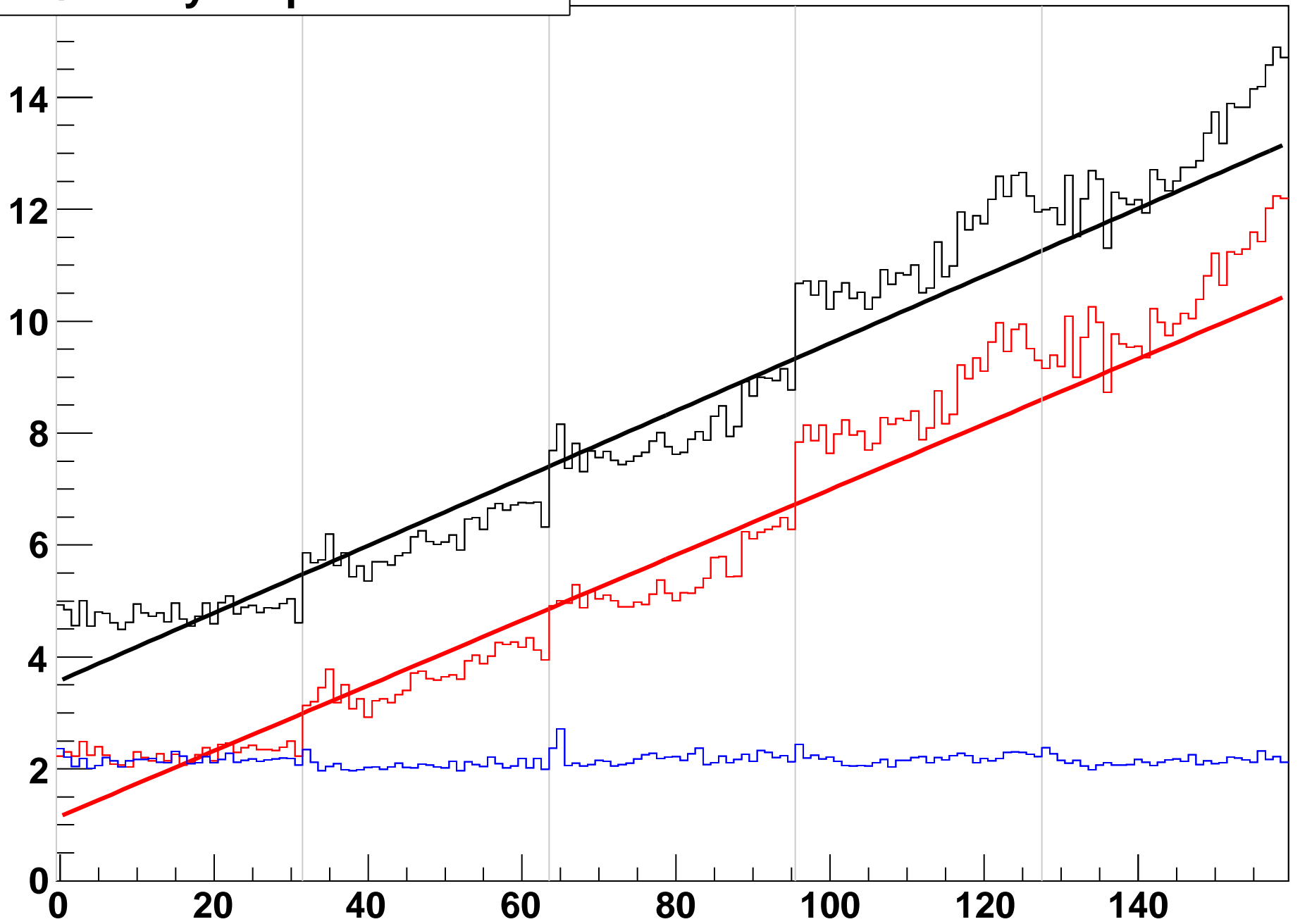
rate/cell by tray module ID



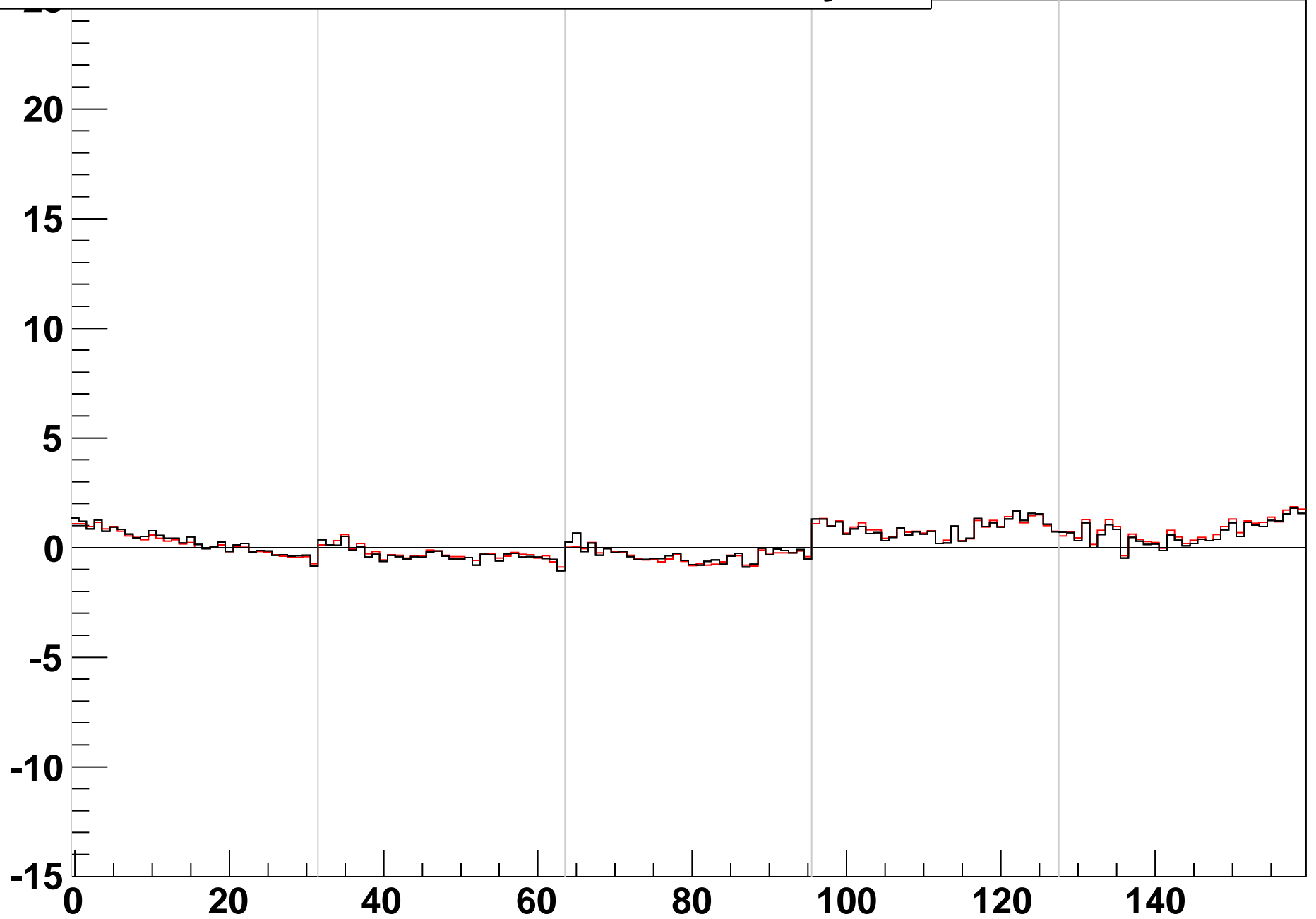
rate/cell by tray cell ID



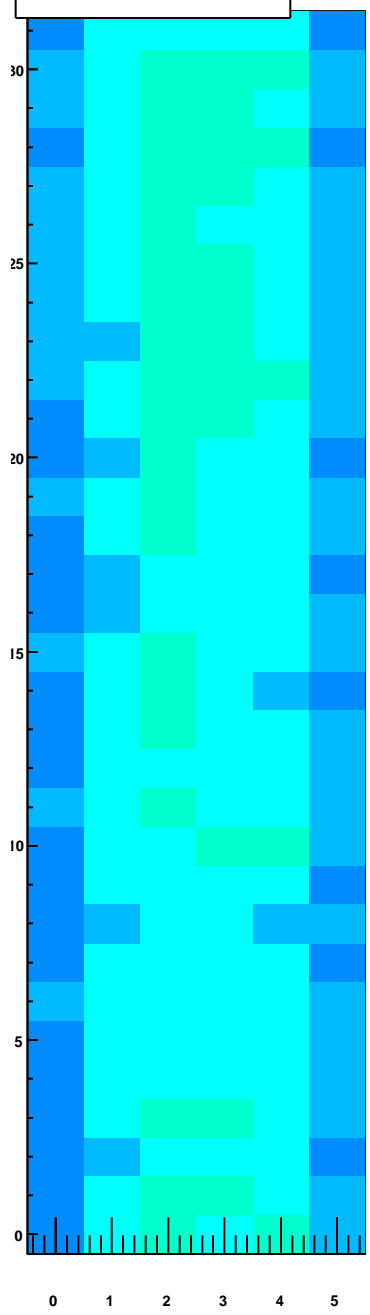
rate/cell by loop module ID



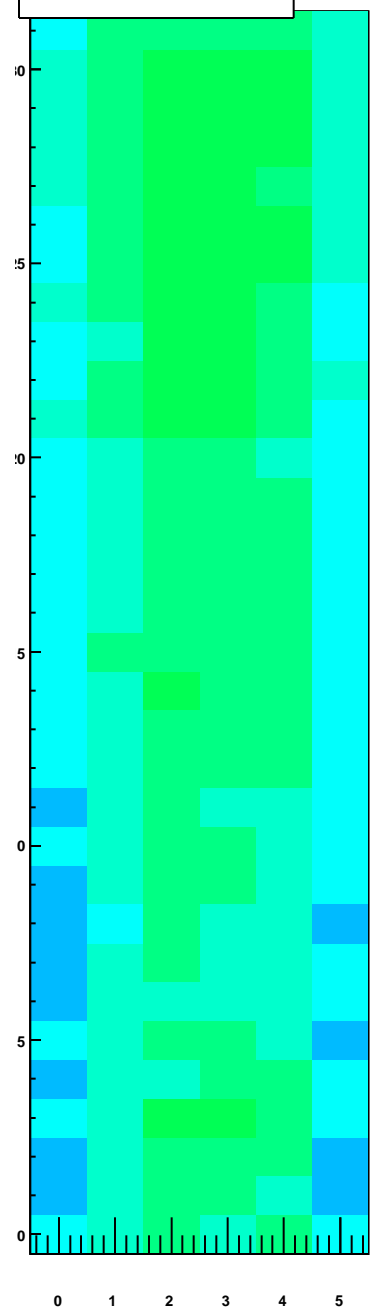
difference between noise rate and mid-tray fit



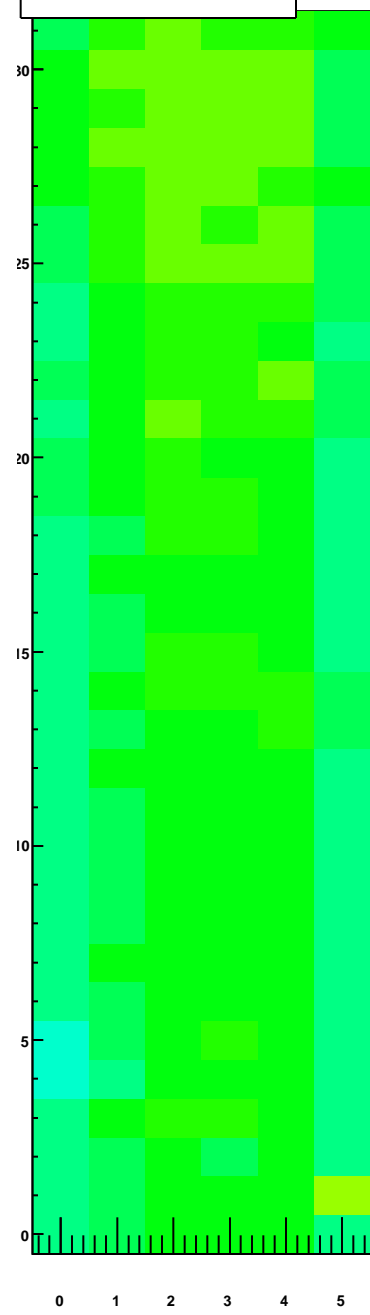
rate/cell by tray module ID, TrayIDinLoop=0



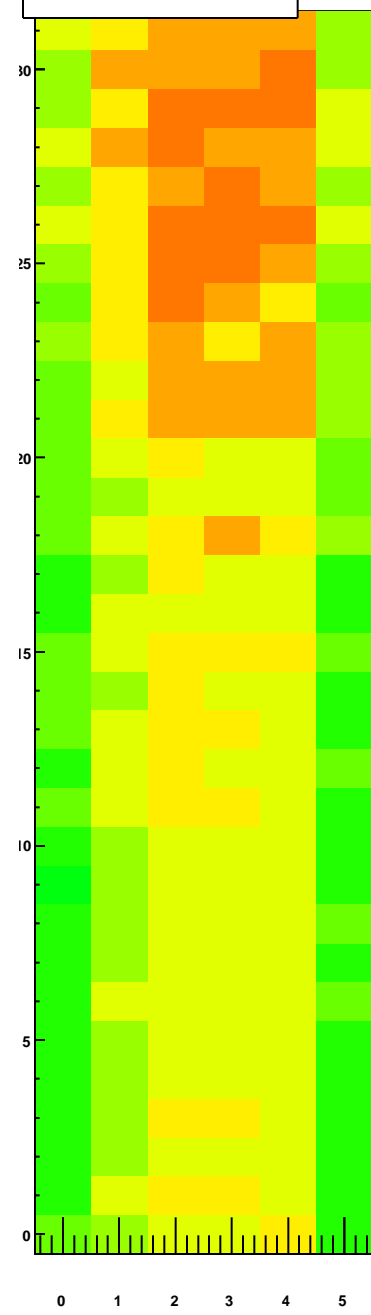
rate/cell by tray module ID, TrayIDinLoop=1



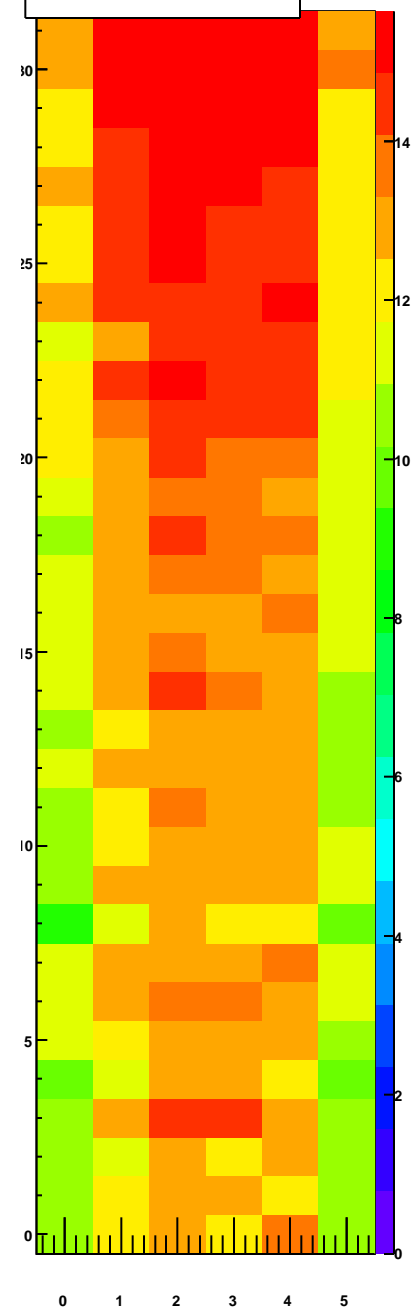
rate/cell by tray module ID, TrayIDinLoop=2



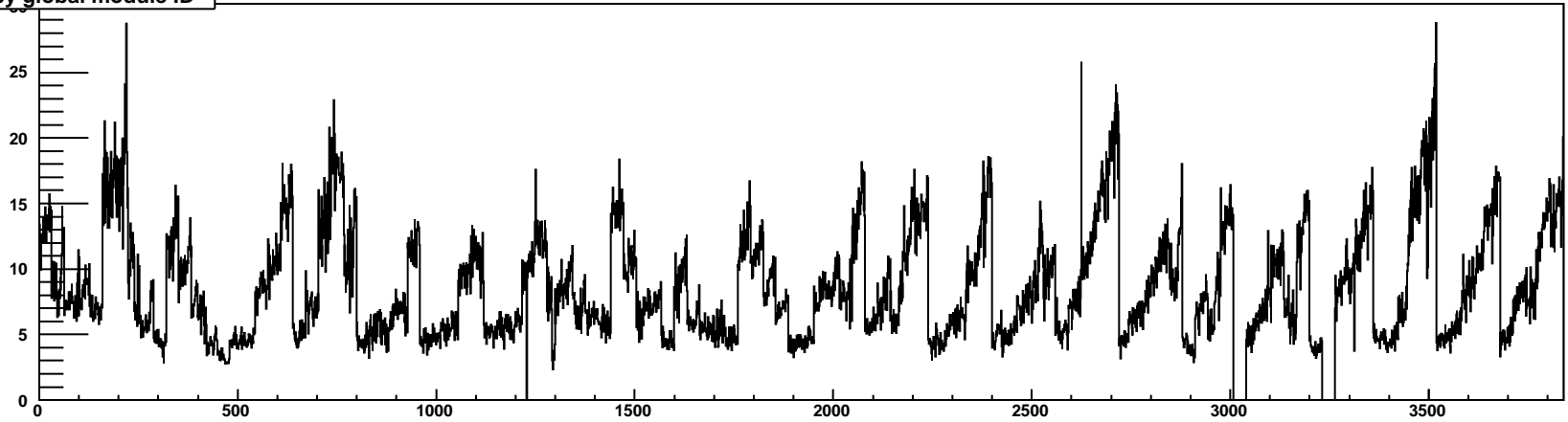
rate/cell by tray module ID, TrayIDinLoop=3



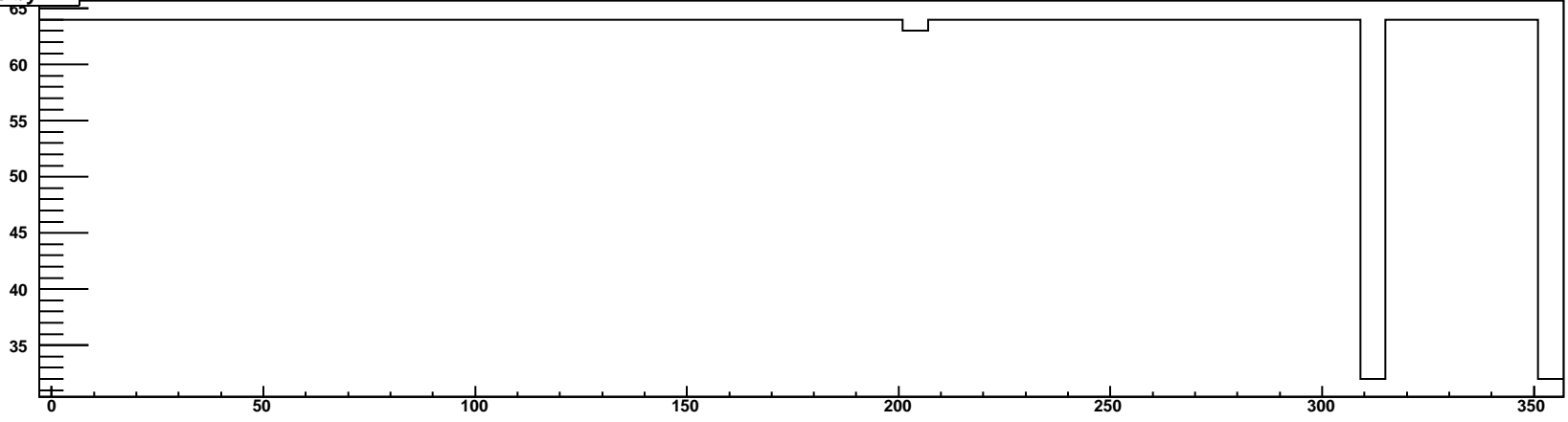
rate/cell by tray module ID, TrayIDinLoop=4



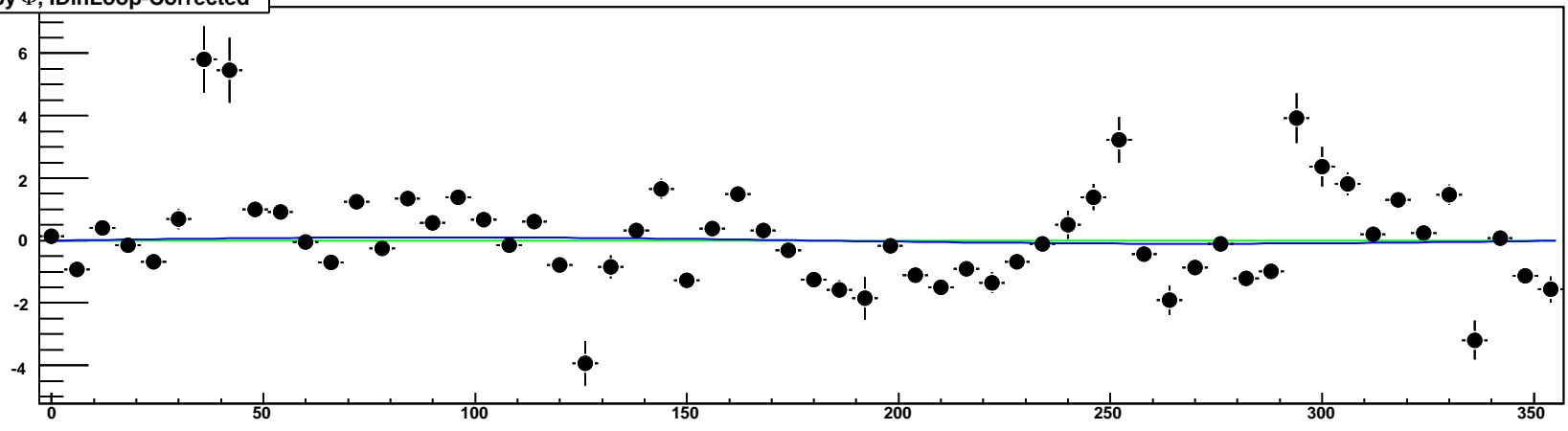
rate/cell by global module ID

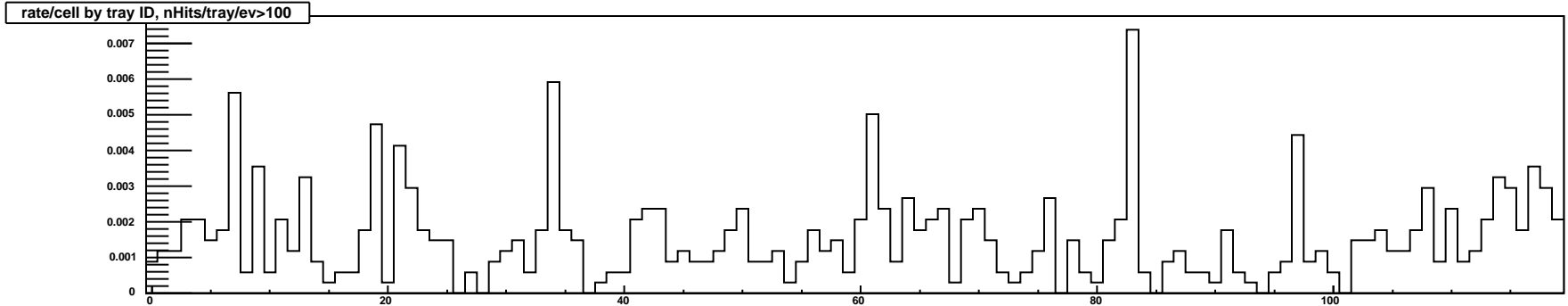
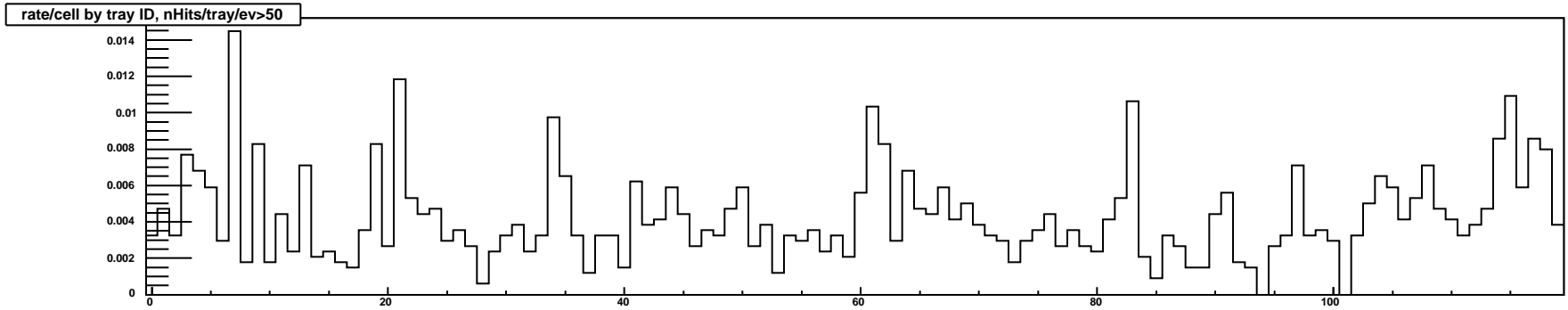
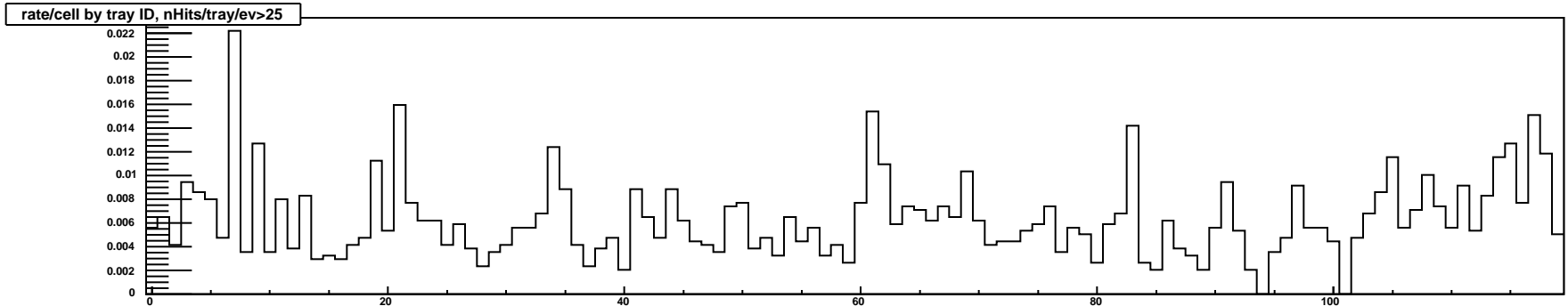


NModules by Φ

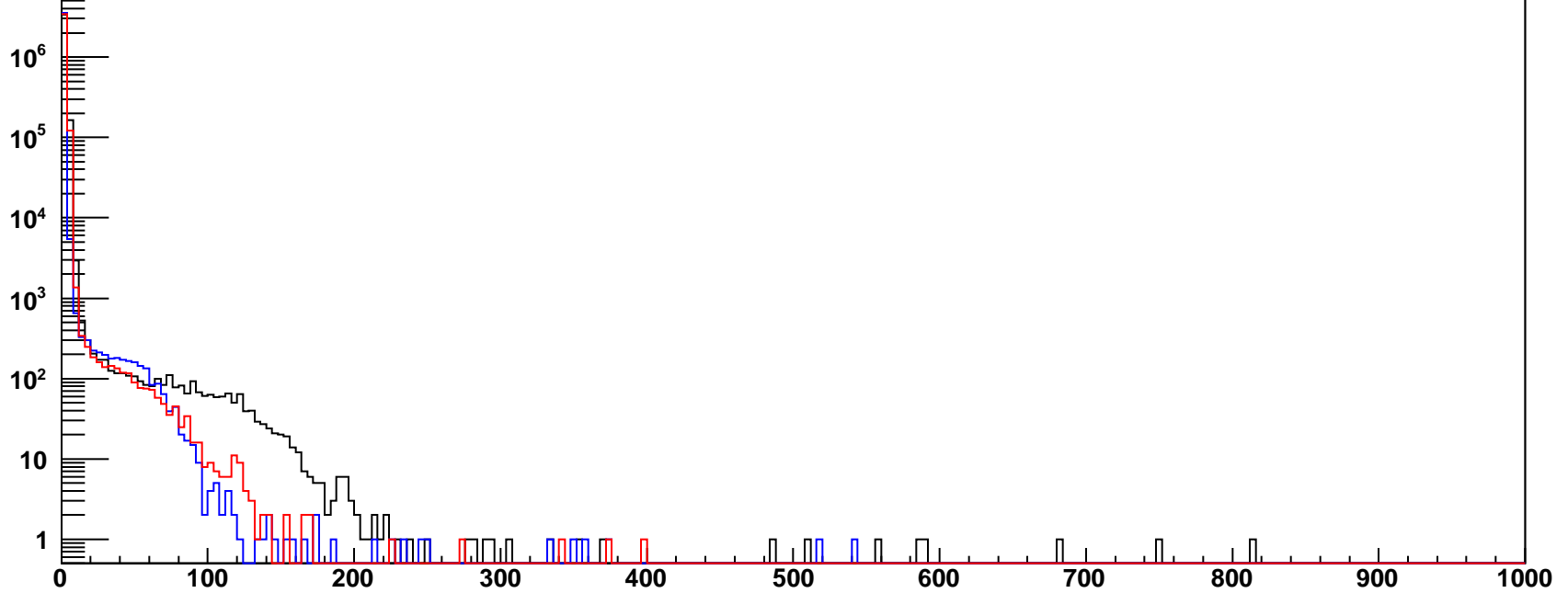


rate/cell by Φ , IDinLoop-Corrected

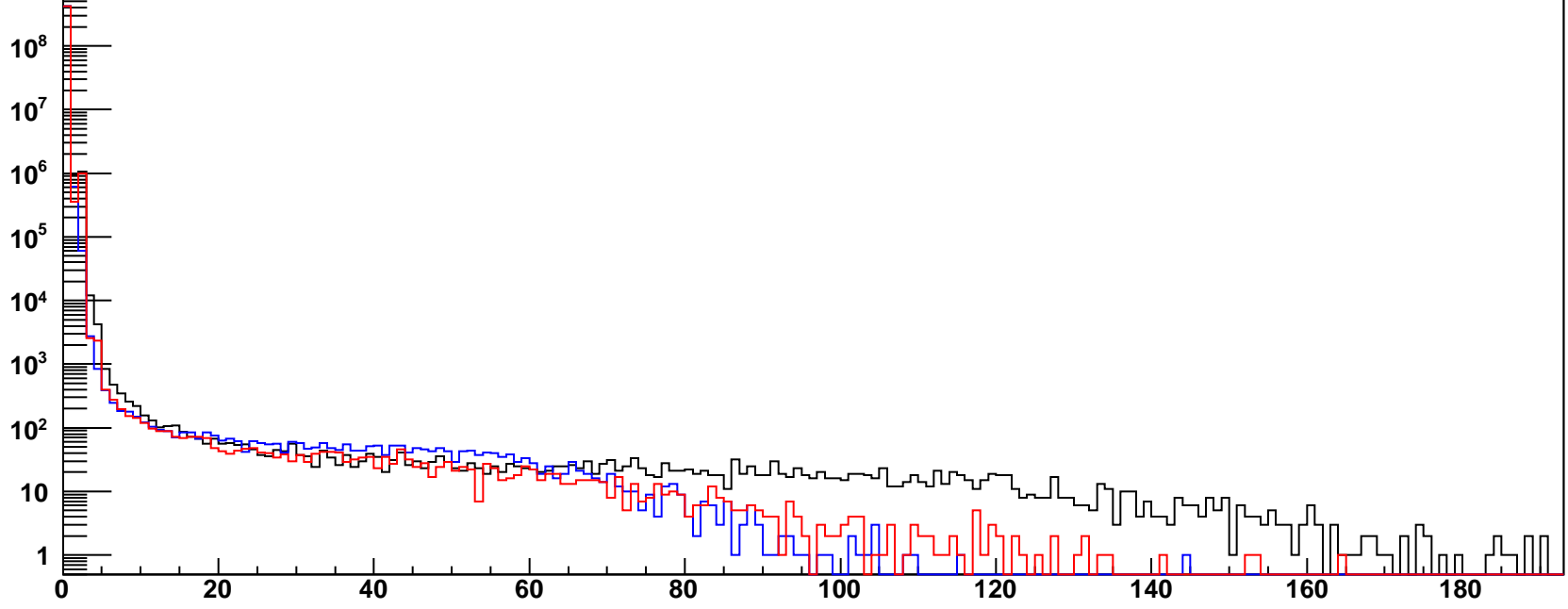




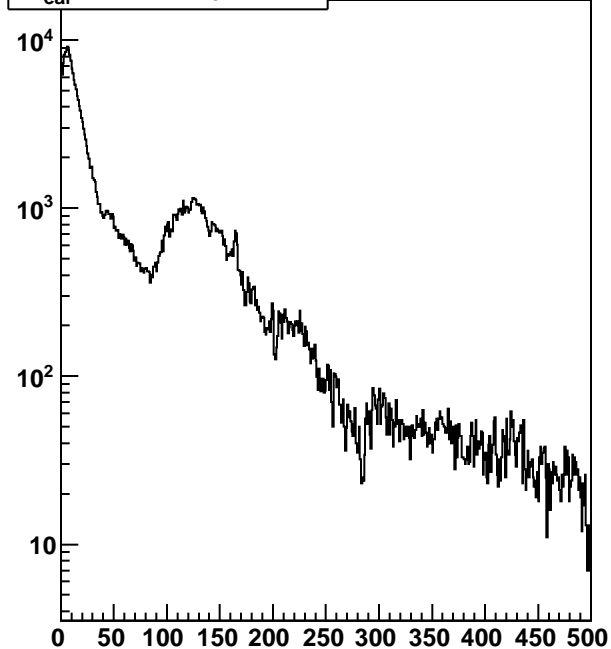
nHits/ev, ToT range



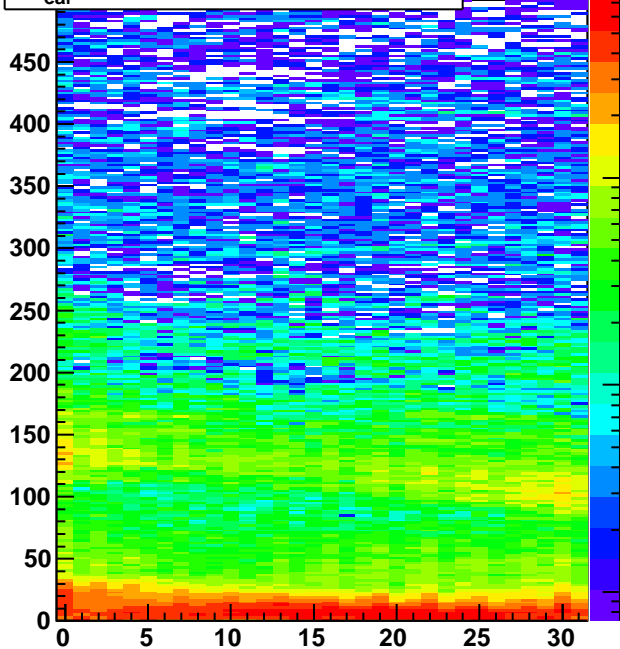
nHits/tray/ev, ToT range



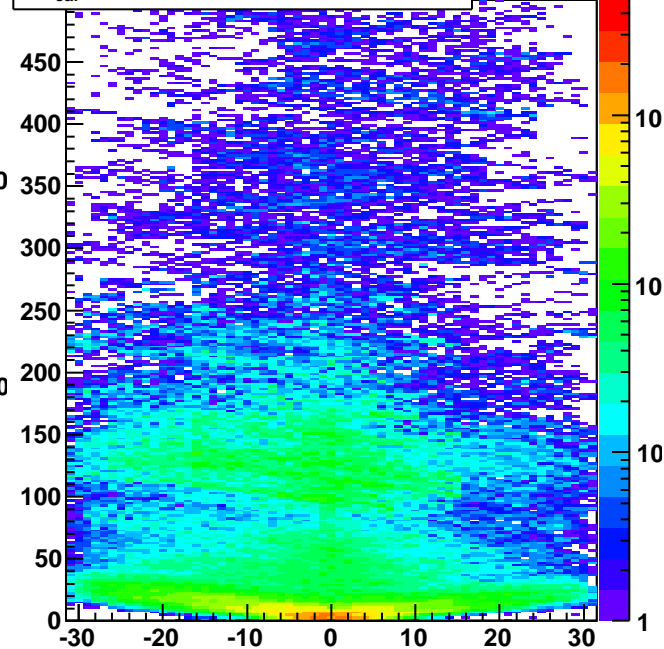
$t-t_{\text{ear}}, n\text{Hits}/\text{tray}/\text{ev}>25$



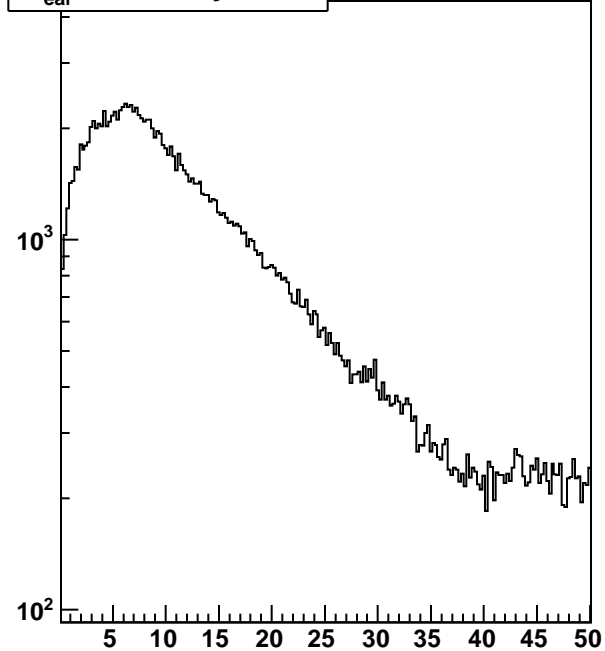
$t-t_{\text{ear}}$ vs module, $n\text{Hits}/\text{tray}/\text{ev}>25$



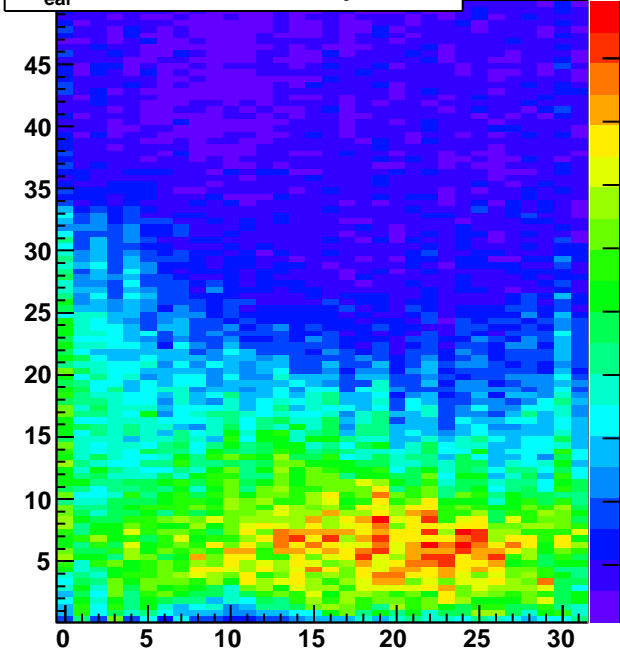
$t-t_{\text{ear}}$ vs rel module, $n\text{Hits}/\text{tray}/\text{ev}>25$



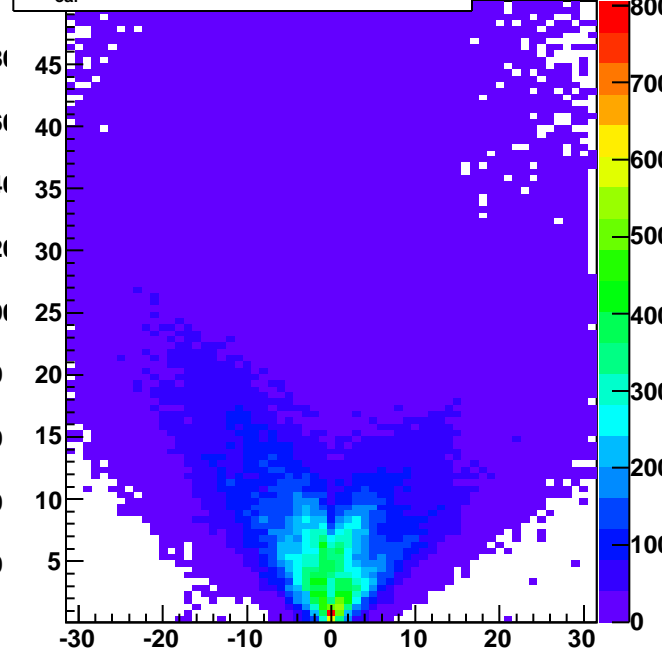
$t-t_{\text{ear}}, n\text{Hits}/\text{tray}/\text{ev}>25$

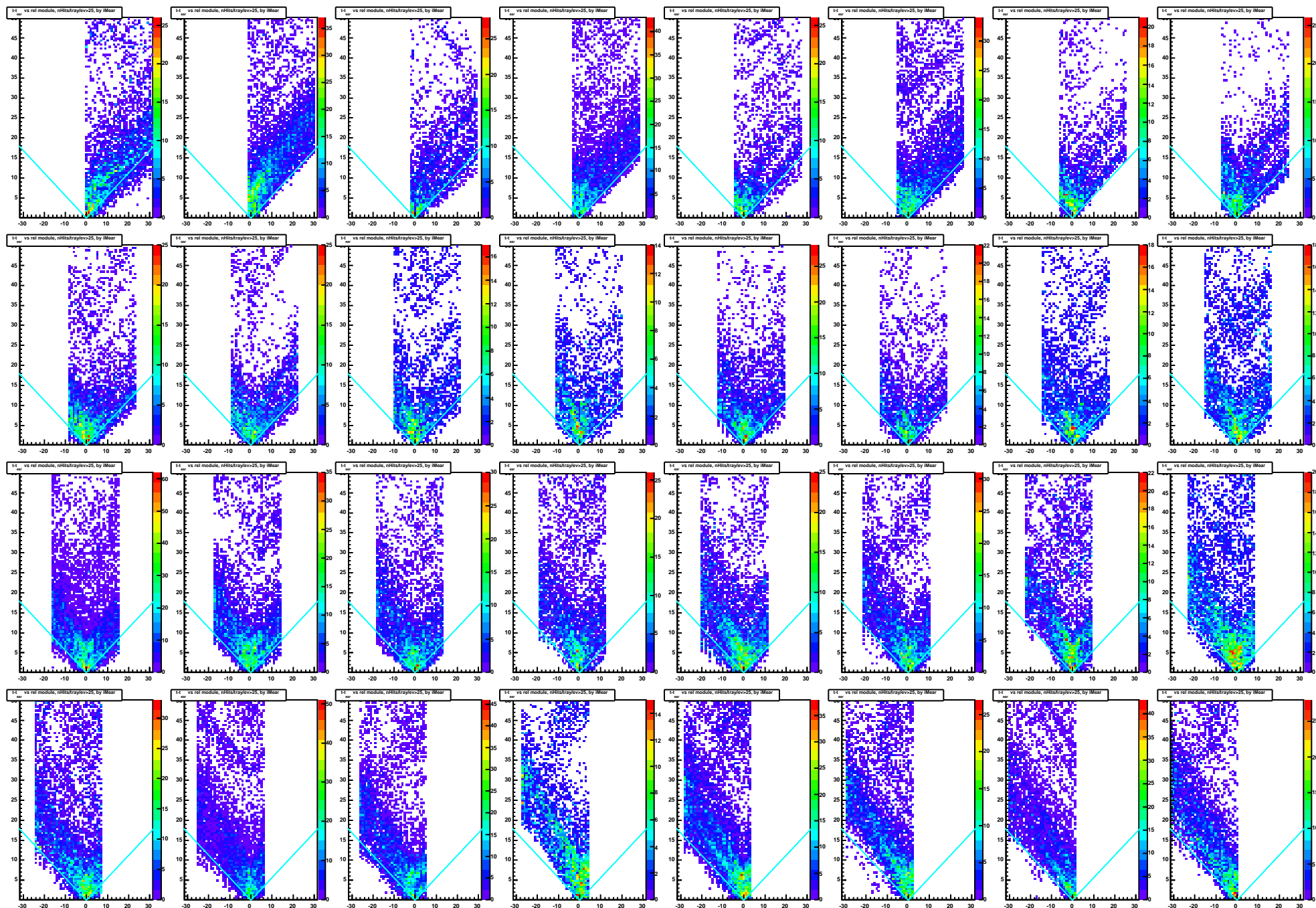


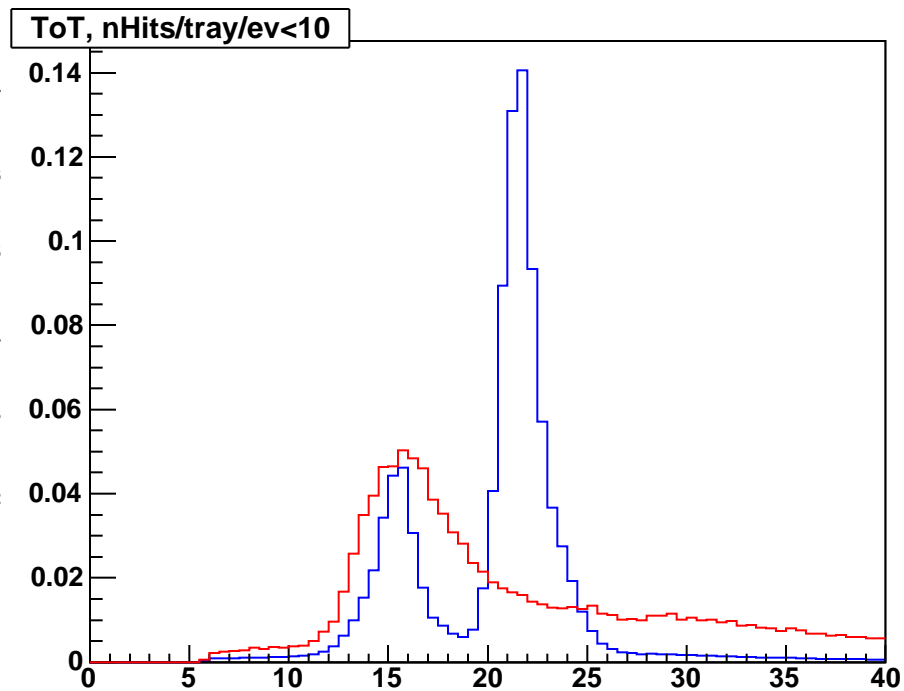
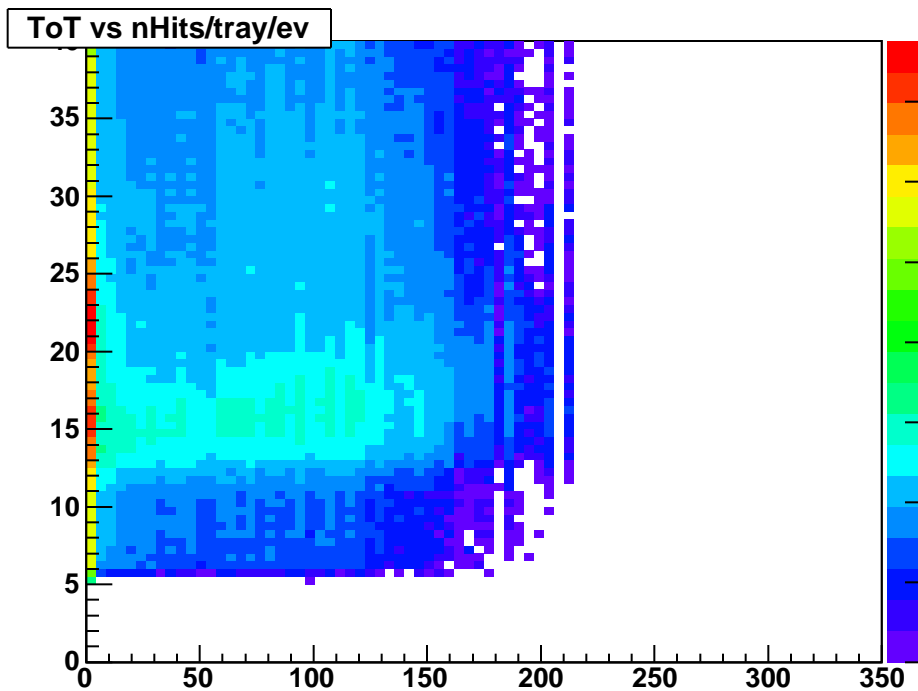
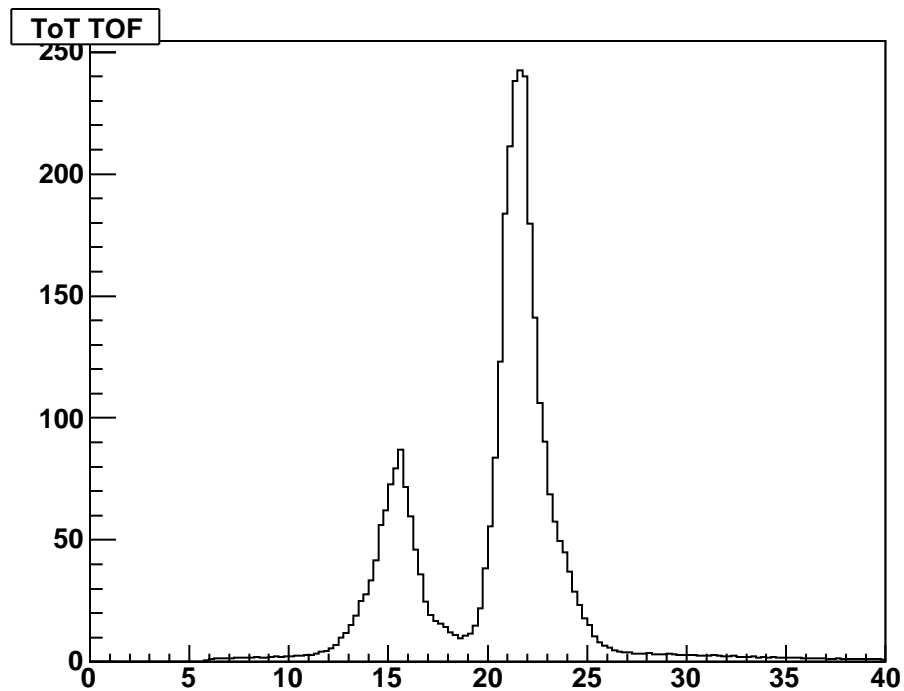
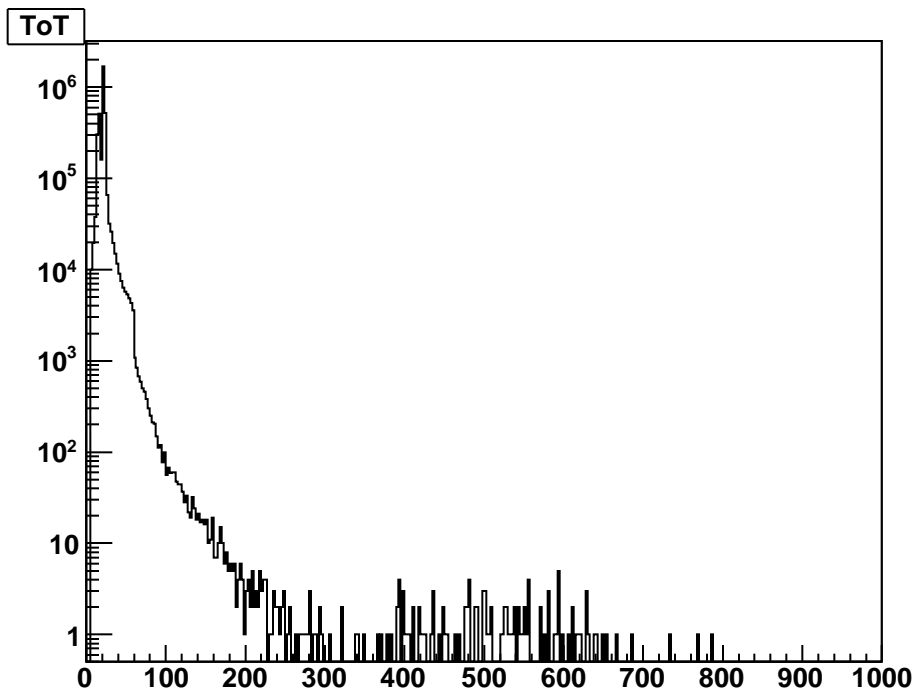
$t-t_{\text{ear}}$ vs module, $n\text{Hits}/\text{tray}/\text{ev}>25$

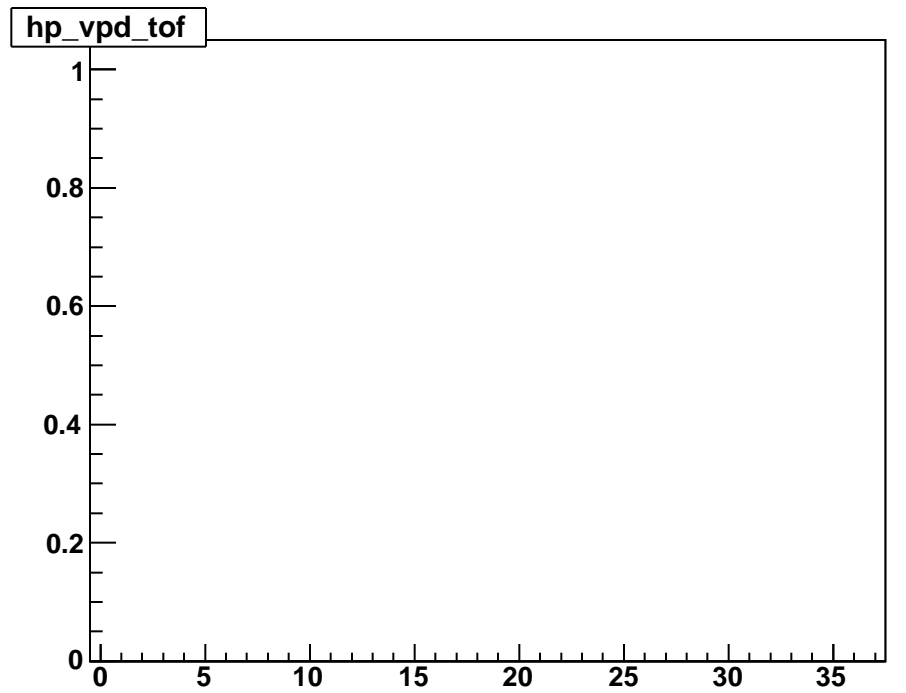
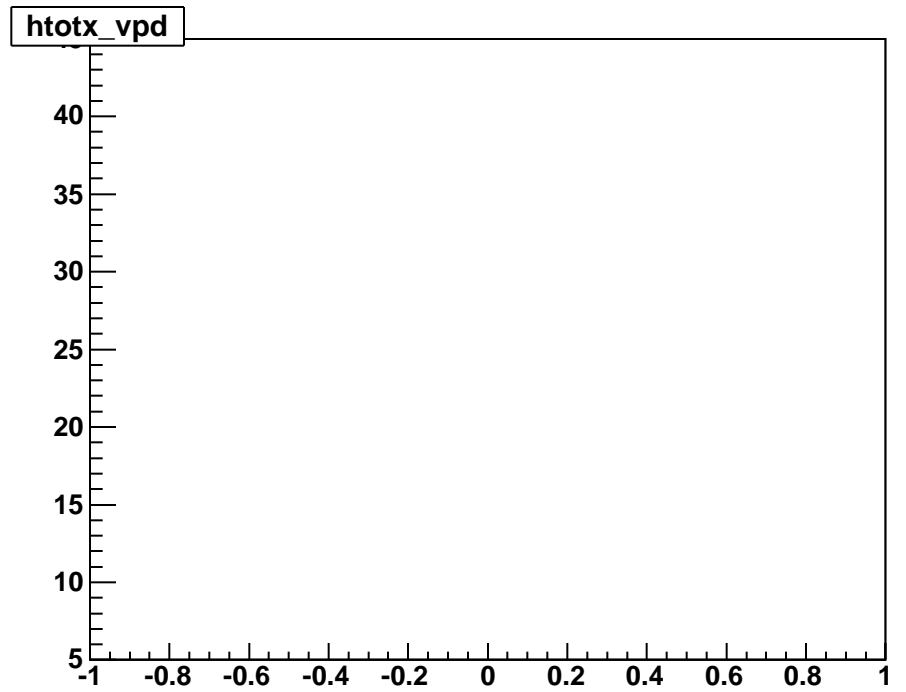
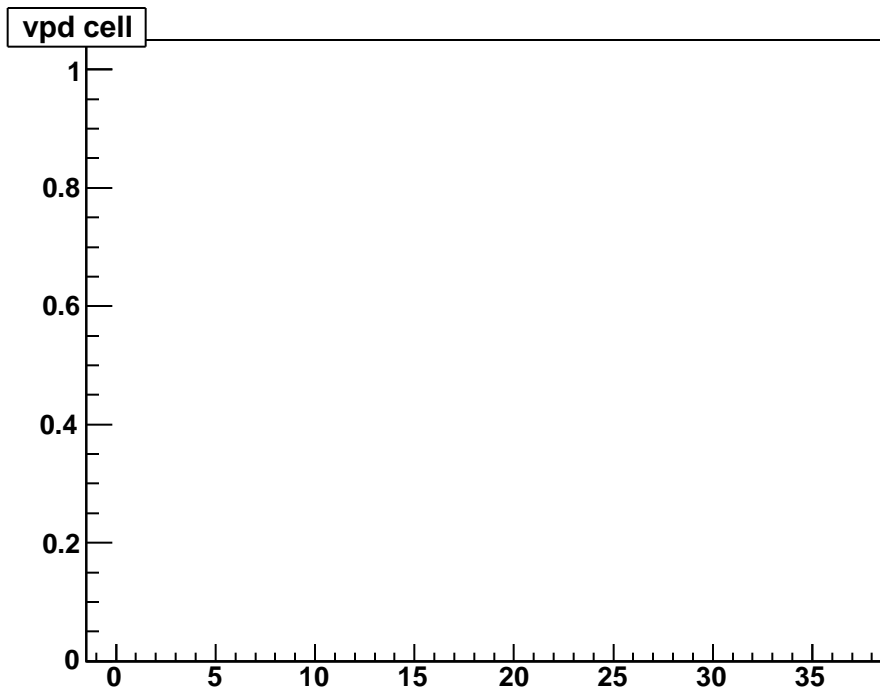


$t-t_{\text{ear}}$ vs rel module, $n\text{Hits}/\text{tray}/\text{ev}>25$

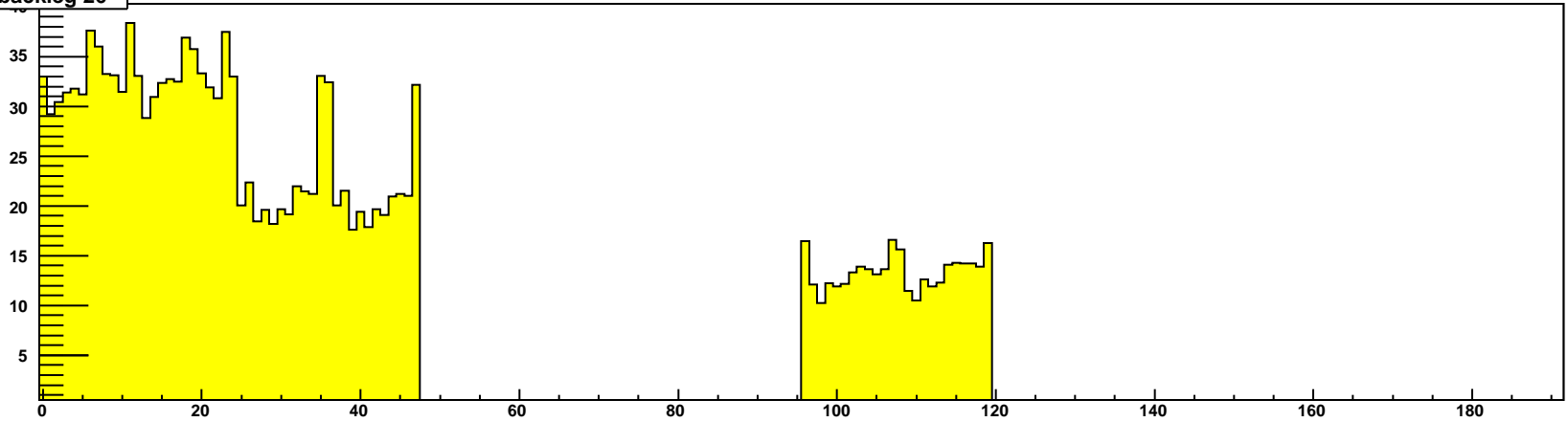




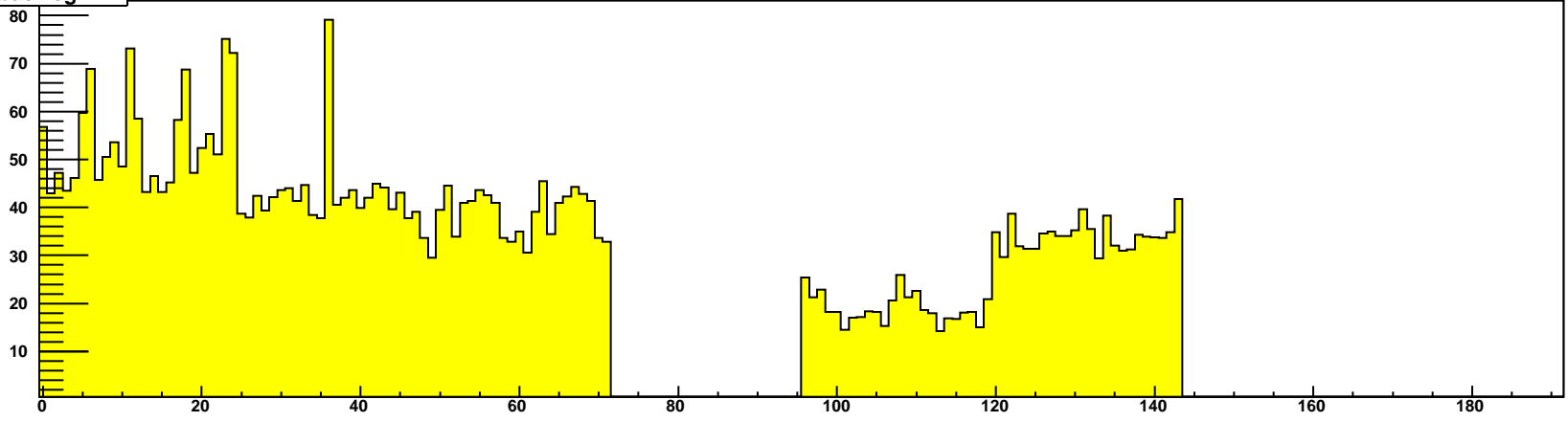




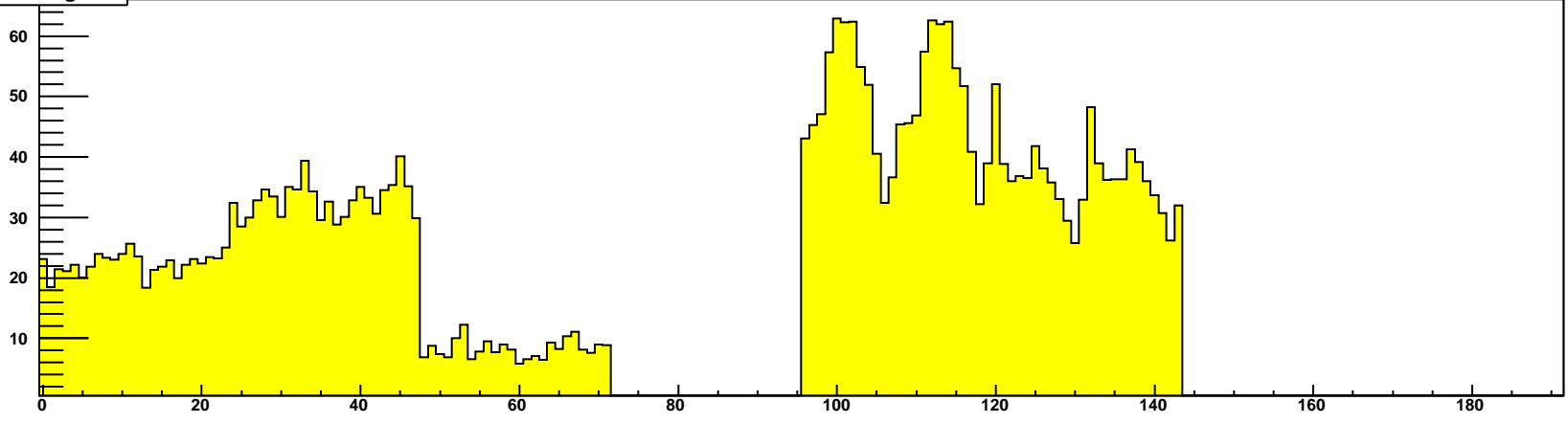
mtd cell, backlog 26

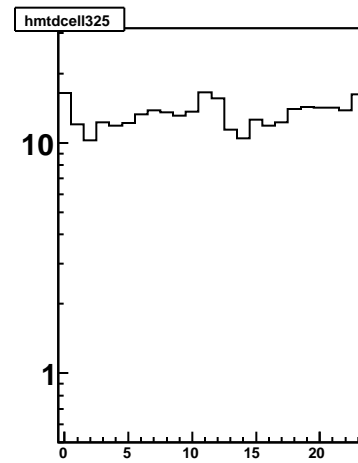
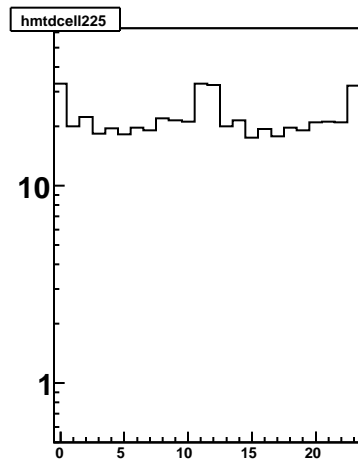
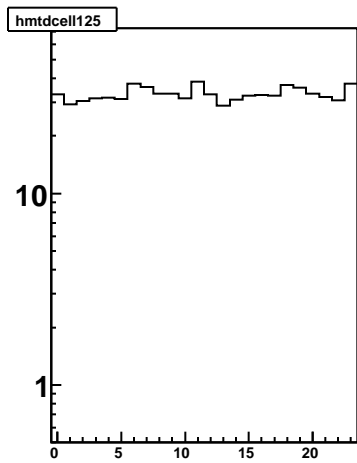
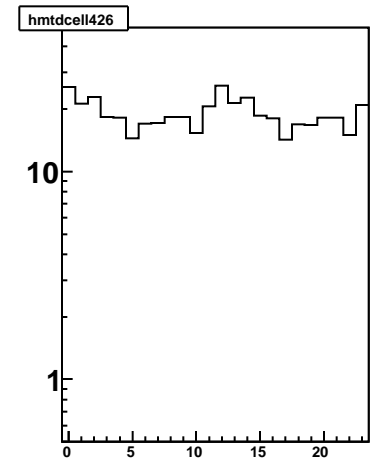
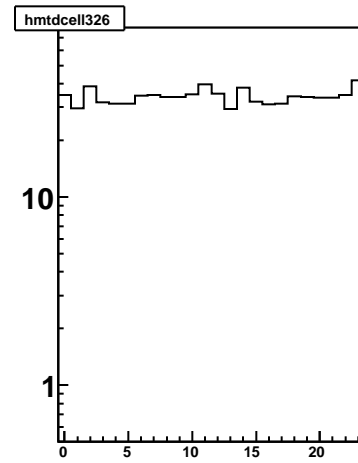
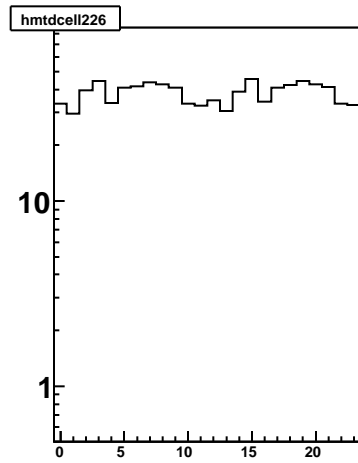
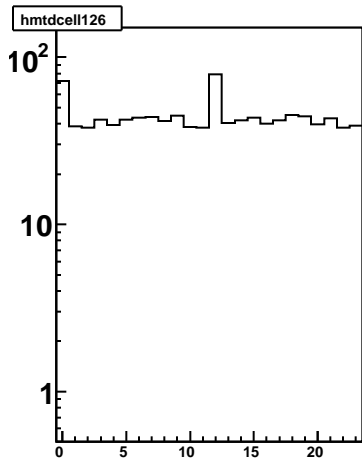
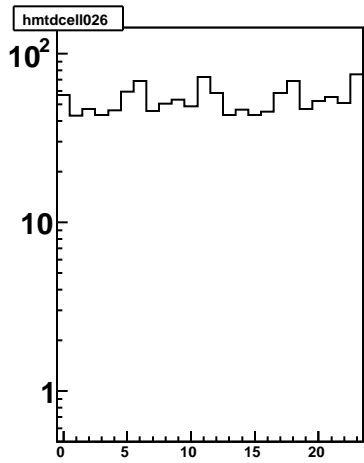
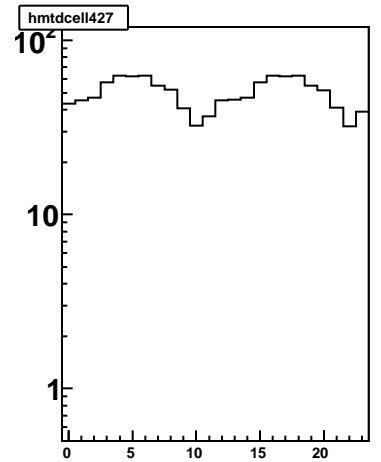
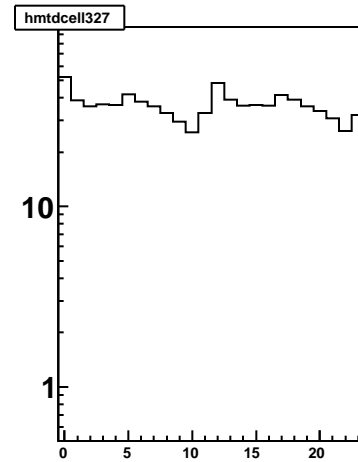
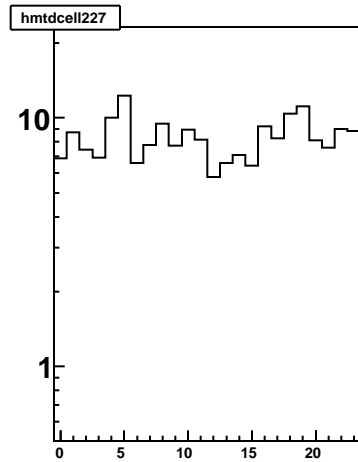
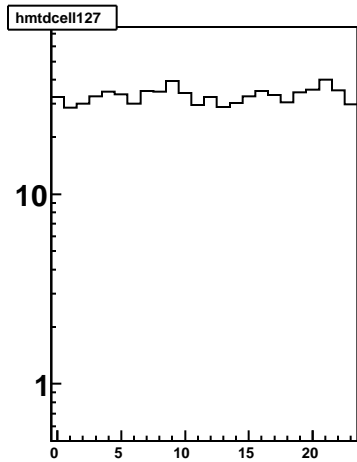
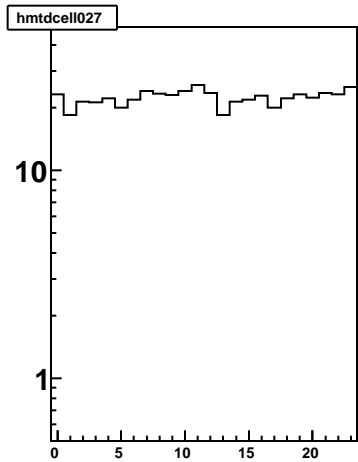


mtd cell, backlog 27

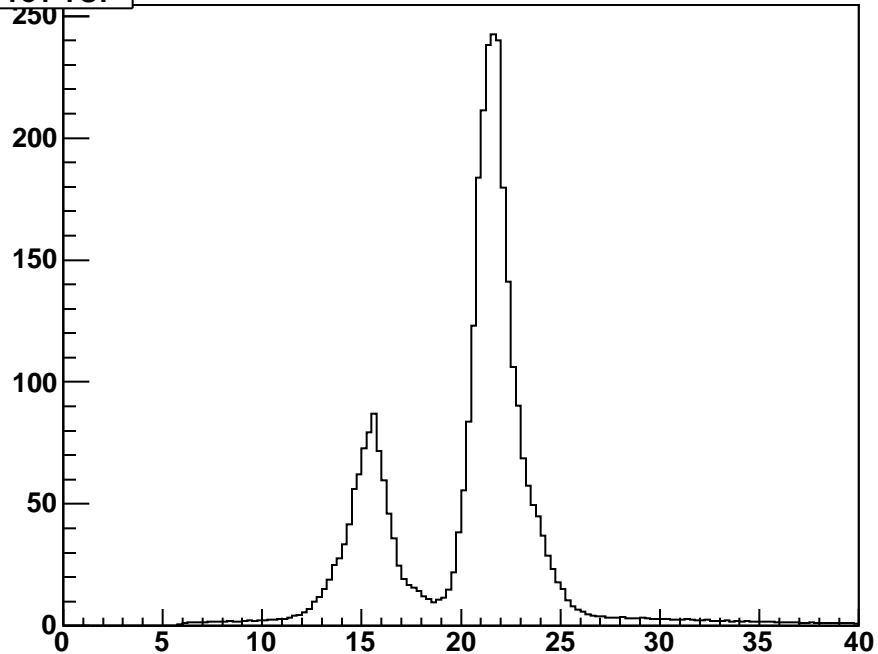


mtd cell, backlog 28

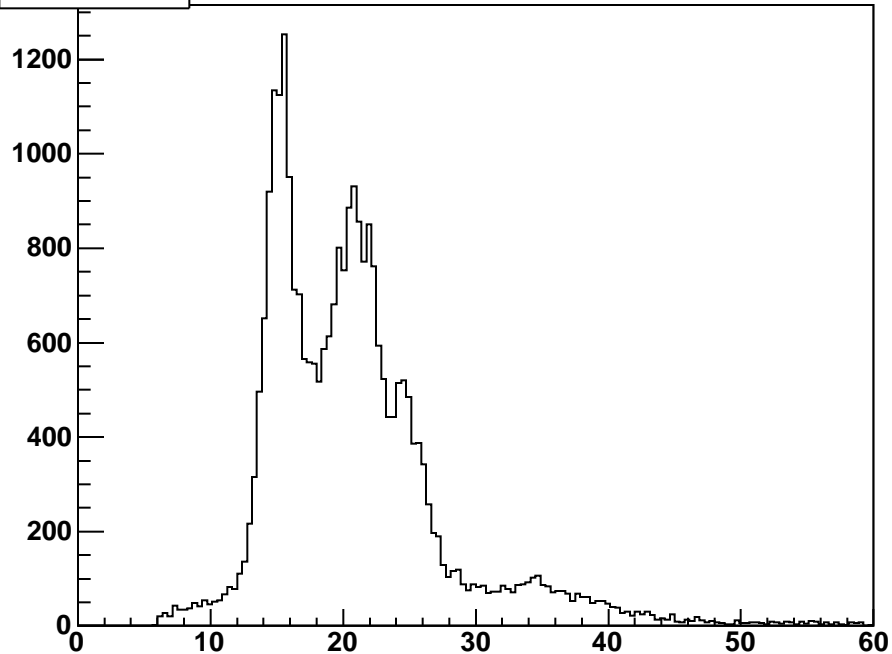




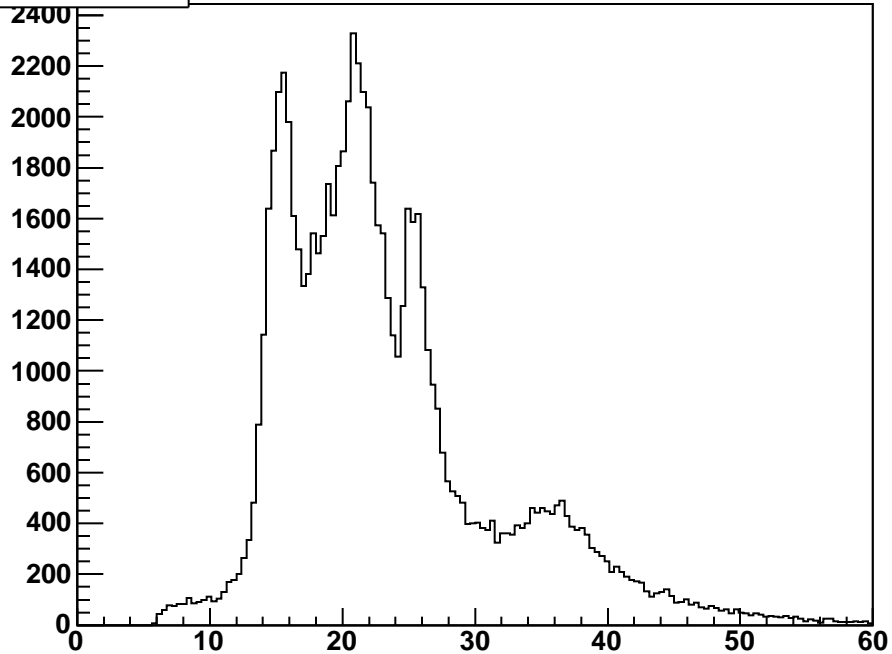
ToT TOF



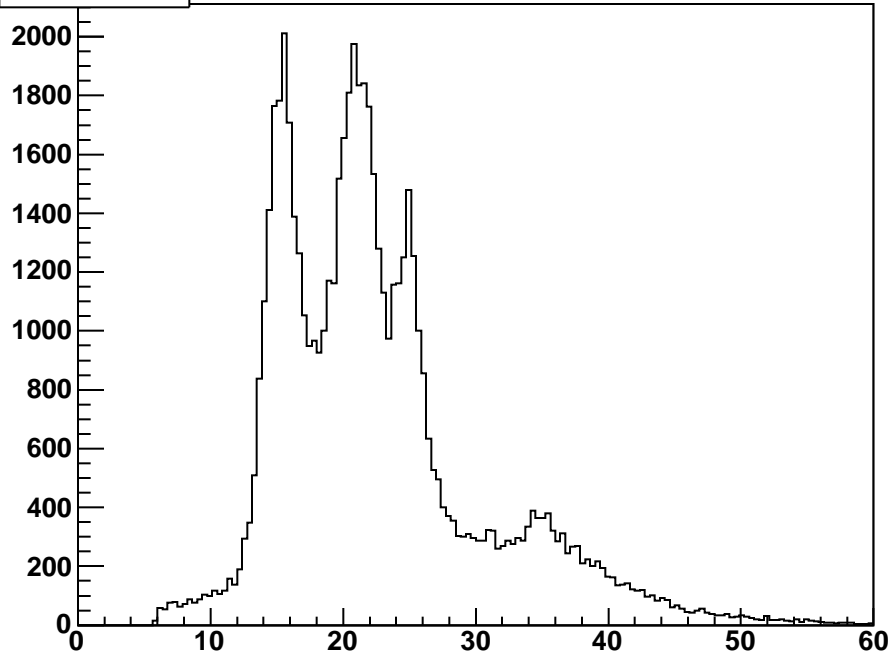
ToT MTD26



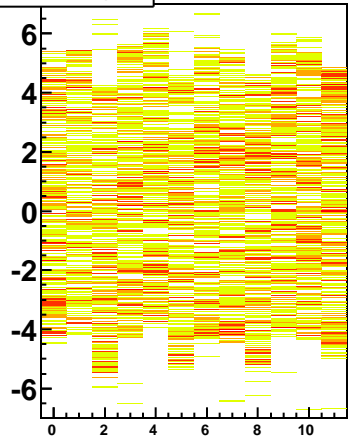
ToT MTD27



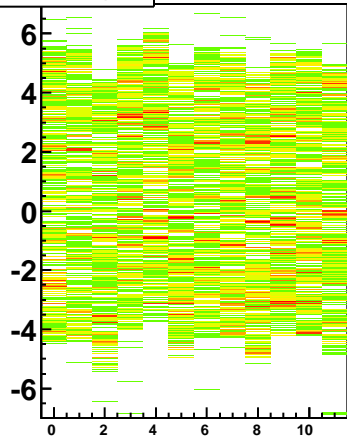
ToT MTD28



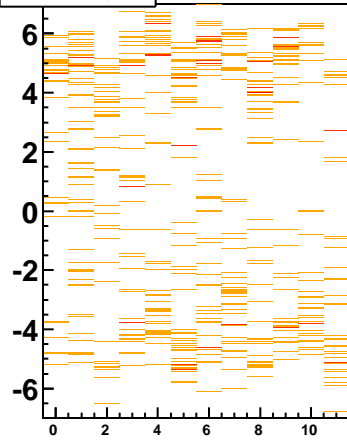
hmtdhitz_strip027



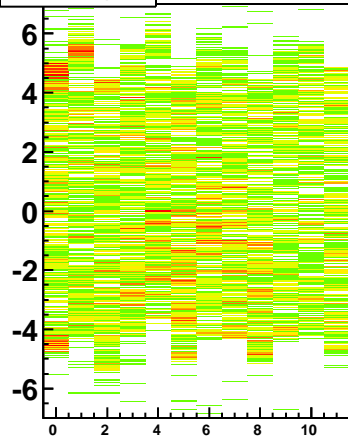
hmtdhitz_strip127



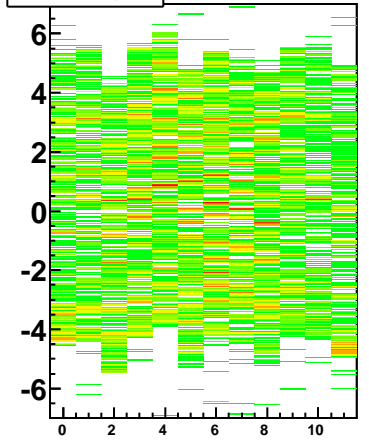
hmtdhitz_strip227



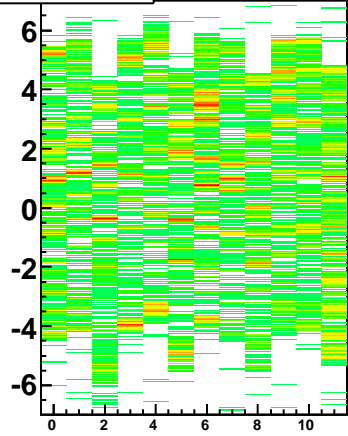
hmtdhitz_strip327



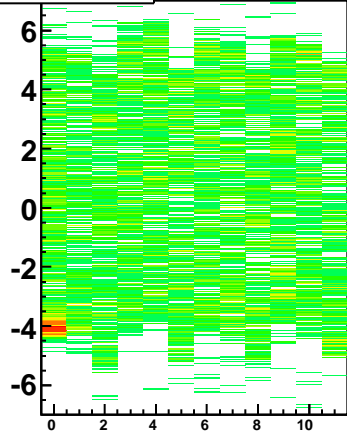
hmtdhitz_strip427



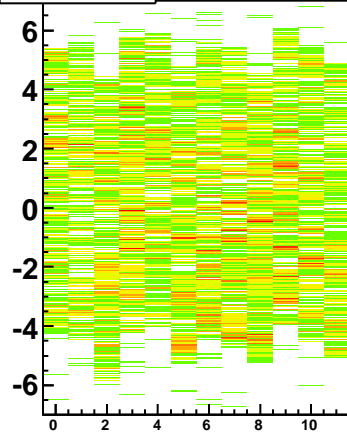
hmtdhitz_strip026



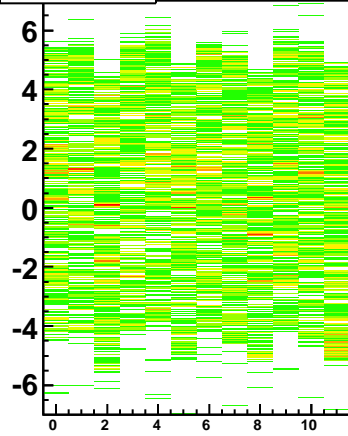
hmtdhitz_strip126



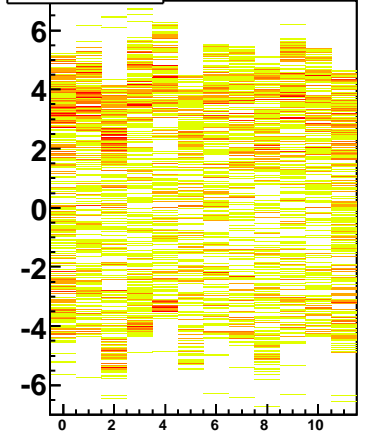
hmtdhitz_strip226



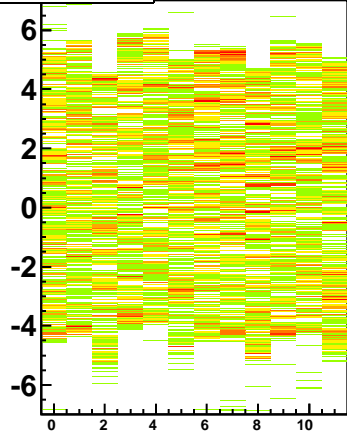
hmtdhitz_strip326



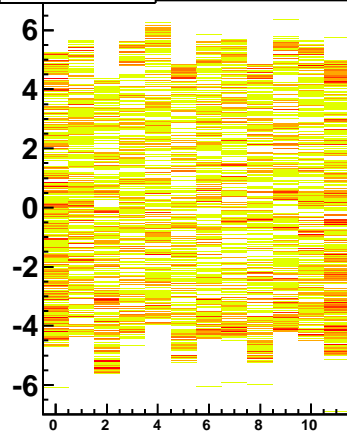
hmtdhitz_strip426



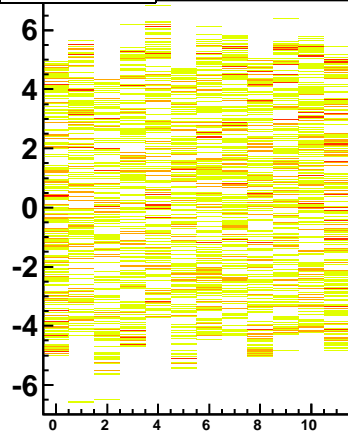
hmtdhitz_strip125



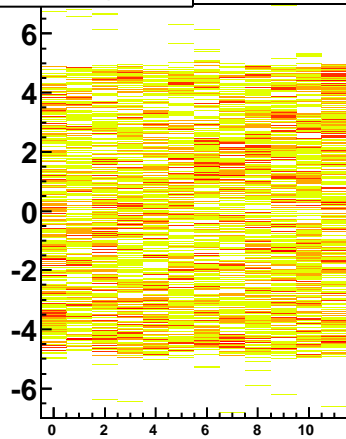
hmtdhitz_strip225



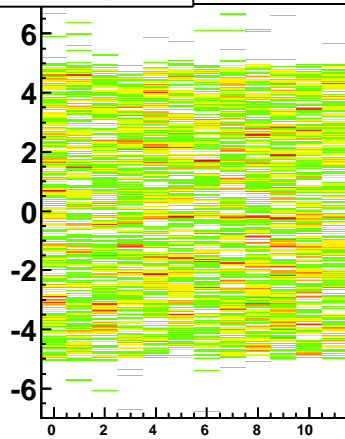
hmtdhitz_strip325



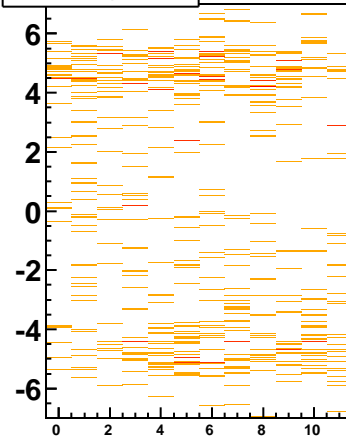
hmtdhitz_strip_zoff027



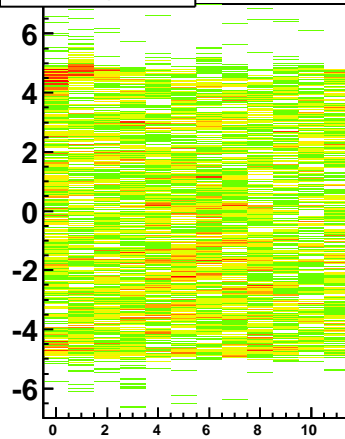
hmtdhitz_strip_zoff127



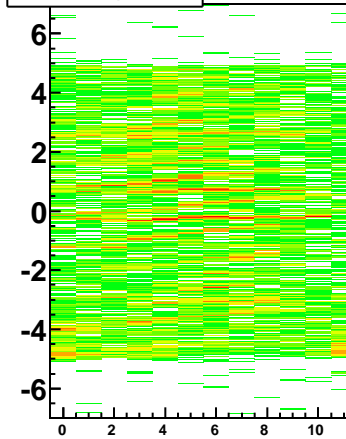
hmtdhitz_strip_zoff227



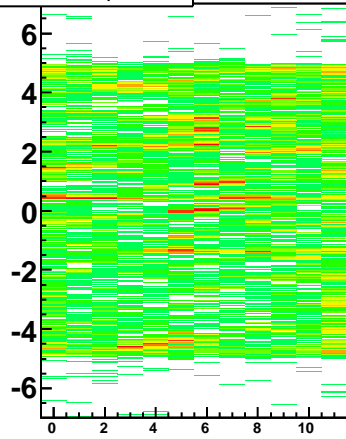
hmtdhitz_strip_zoff327



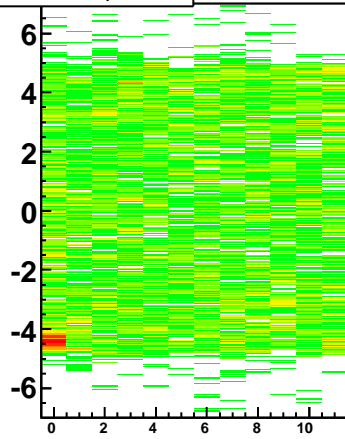
hmtdhitz_strip_zoff427



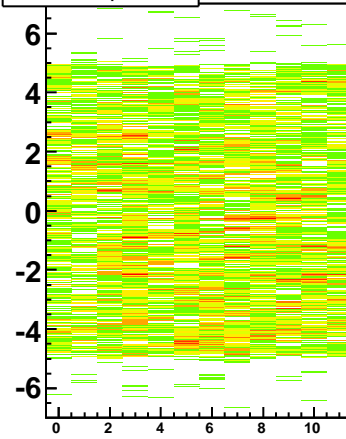
hmtdhitz_strip_zoff026



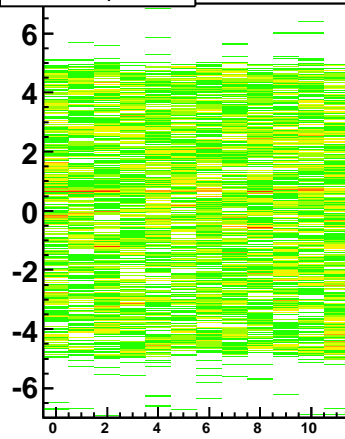
hmtdhitz_strip_zoff126



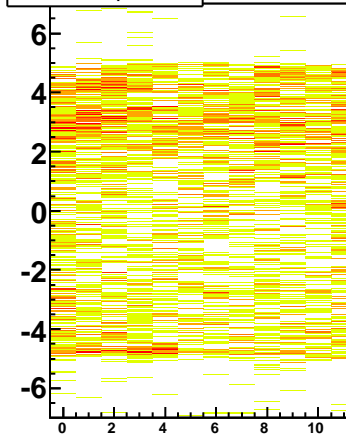
hmtdhitz_strip_zoff226



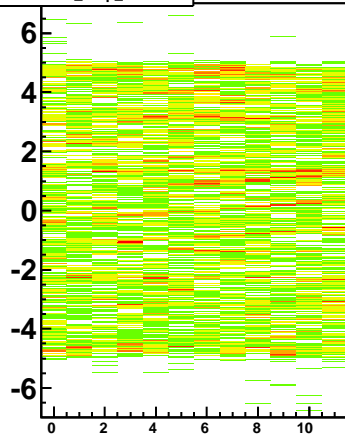
hmtdhitz_strip_zoff326



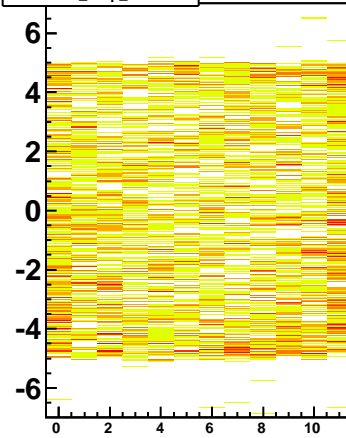
hmtdhitz_strip_zoff426



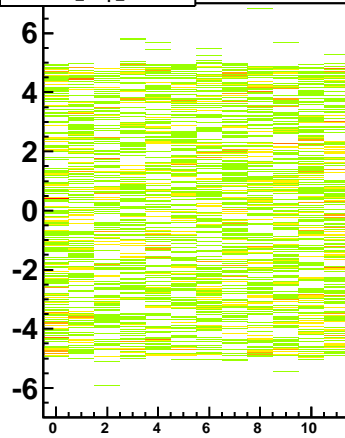
hmtdhitz_strip_zoff125



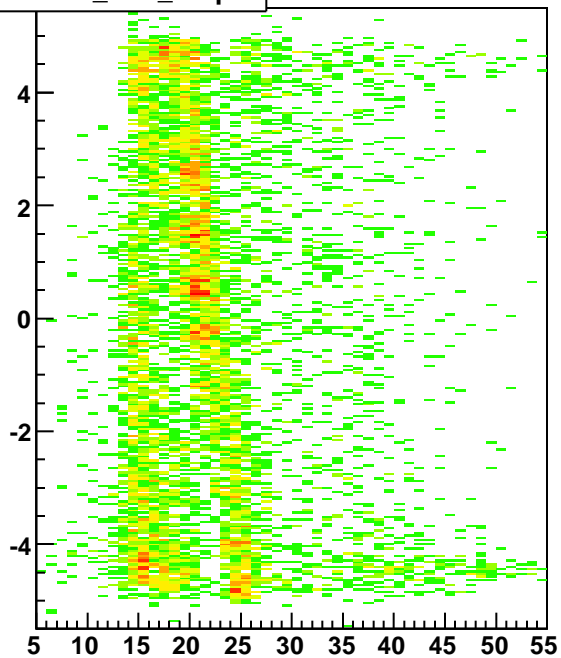
hmtdhitz_strip_zoff225



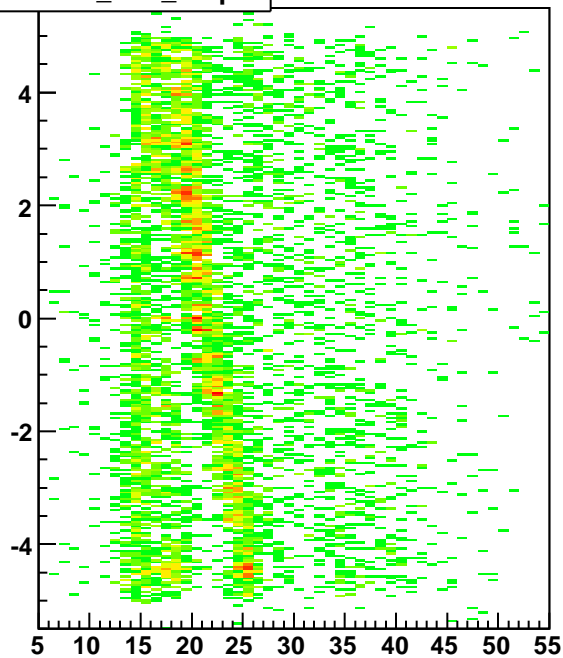
hmtdhitz_strip_zoff325



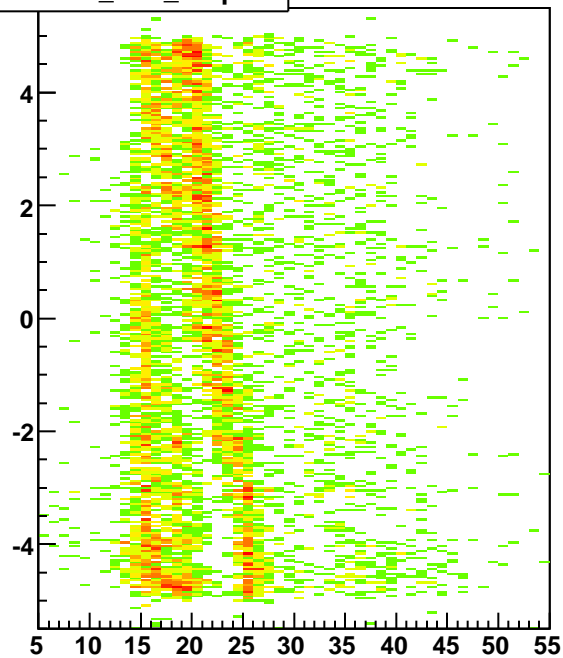
hmtdhitz_tota_strip1



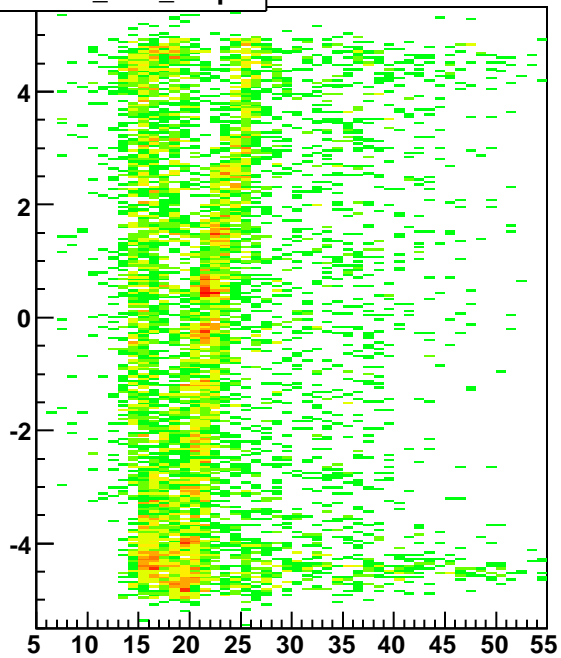
hmtdhitz_tota_strip6



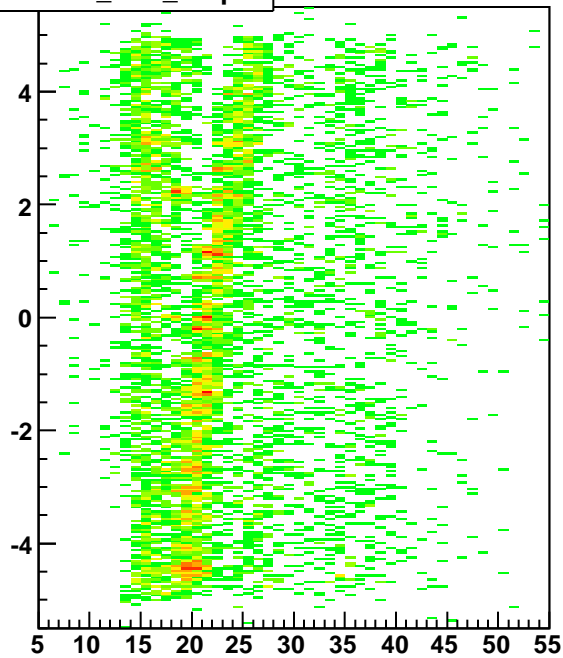
hmtdhitz_tota_strip12



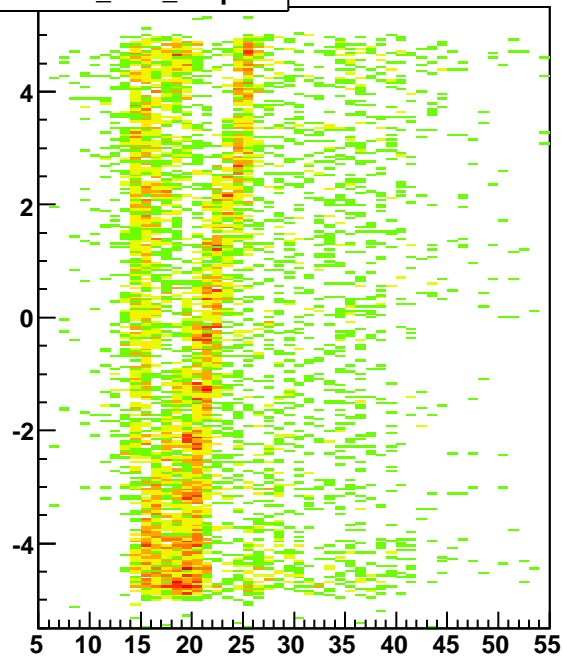
hmtdhitz_totb_strip1



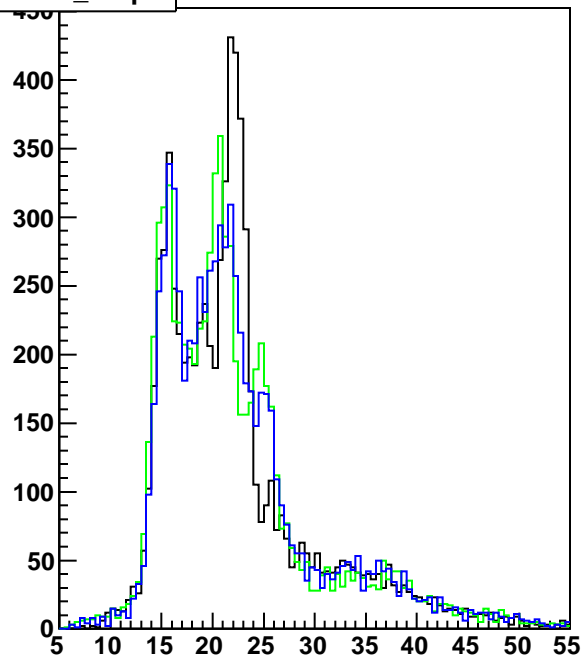
hmtdhitz_totb_strip6



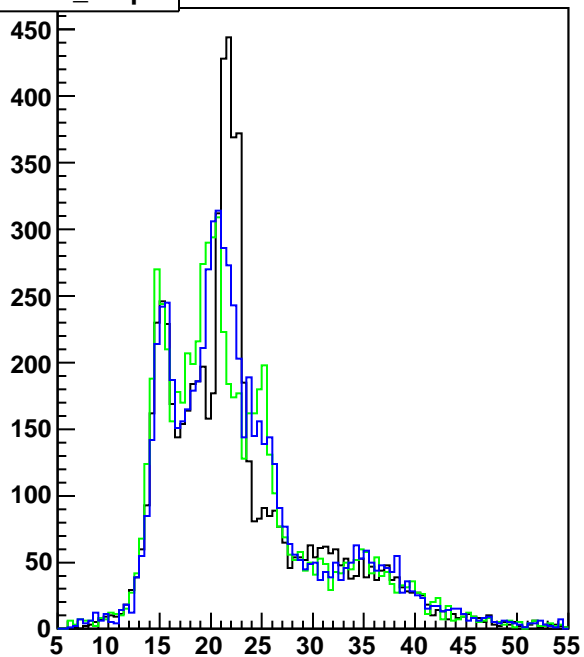
hmtdhitz_totb_strip12



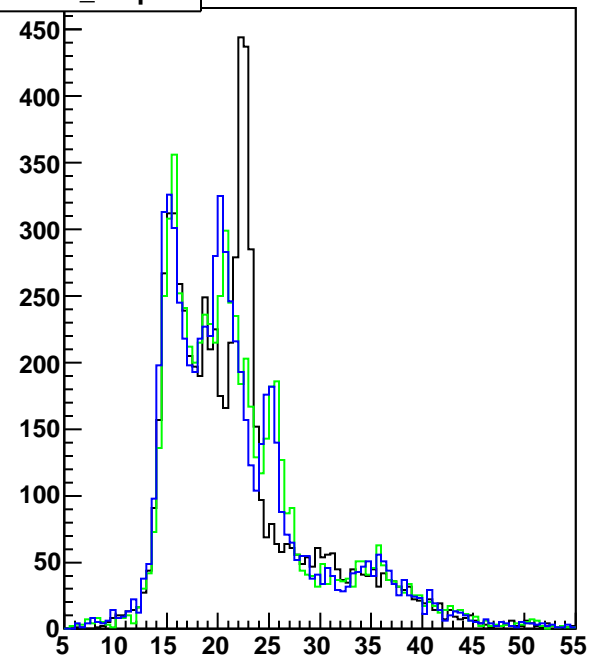
htotm_strip1



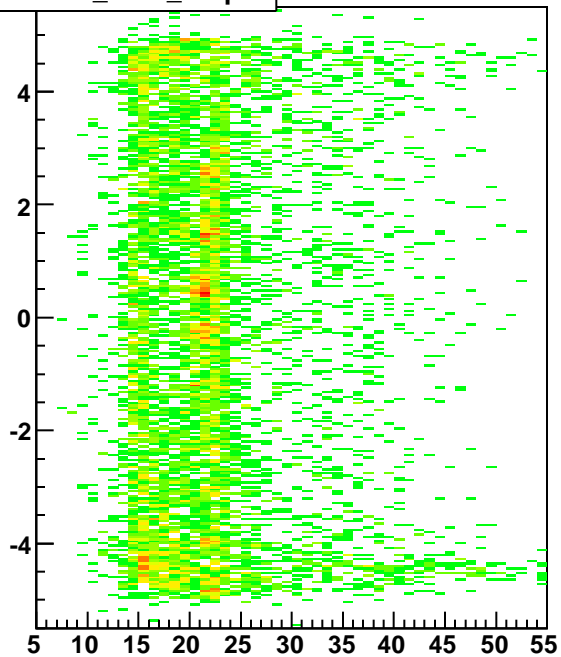
htotm_strip6



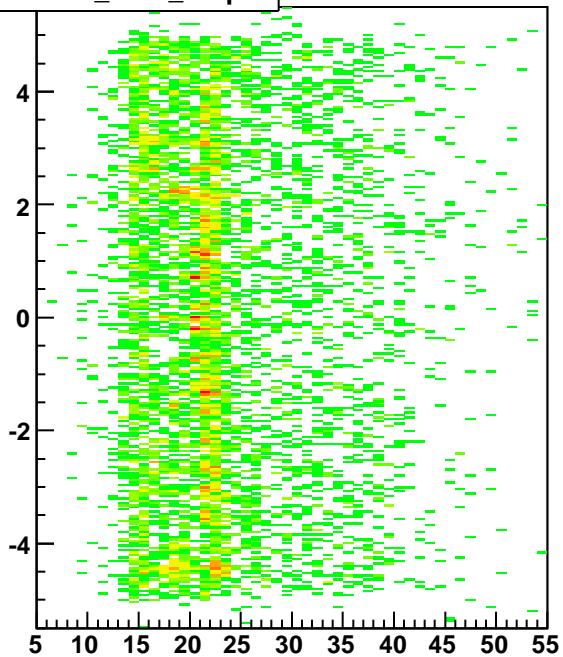
htotm_strip12



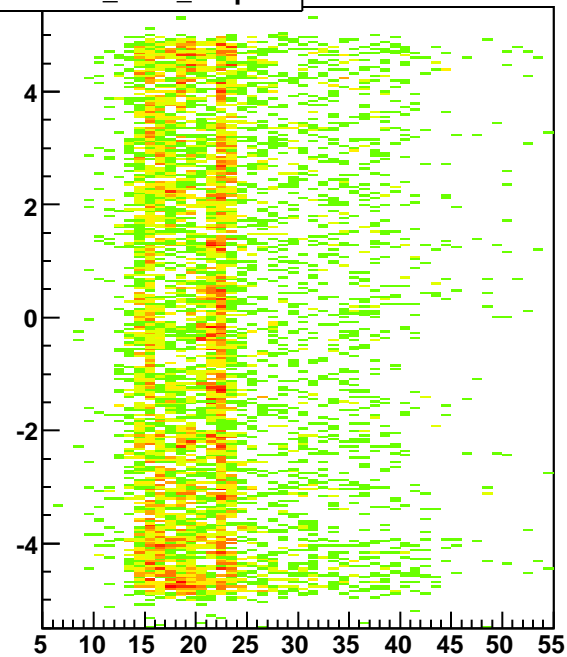
hmtdhitz_totm_strip1



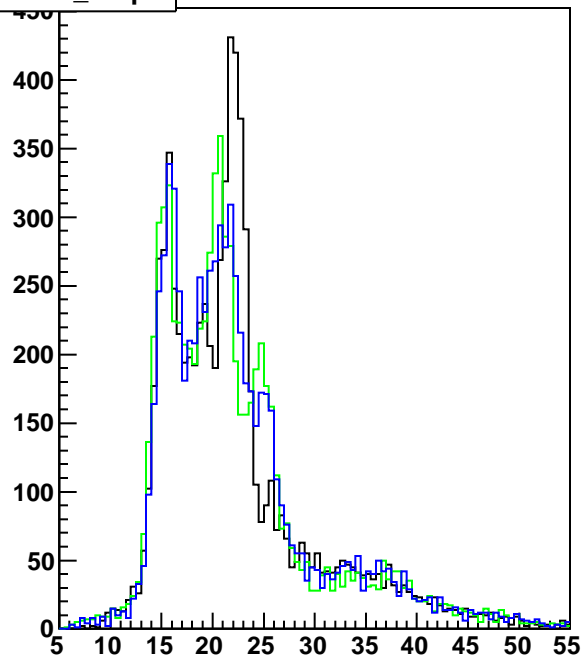
hmtdhitz_totm_strip6



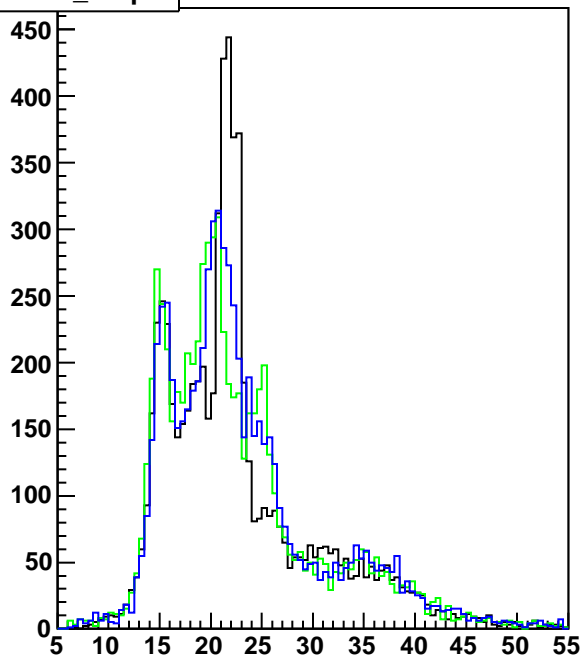
hmtdhitz_totm_strip12



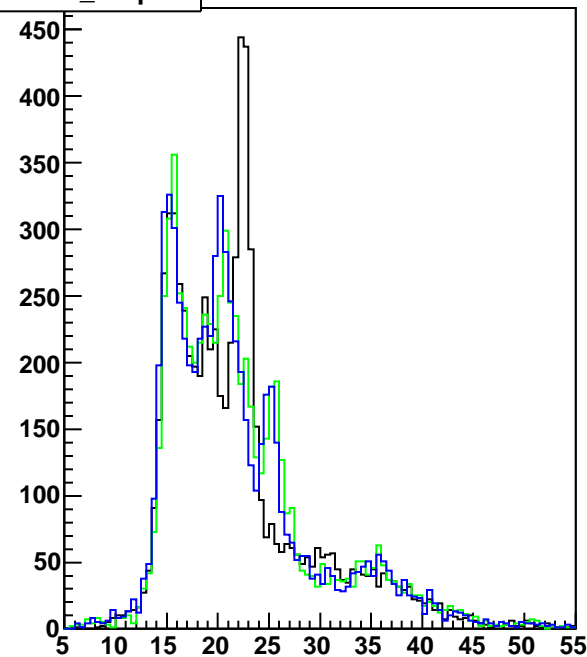
htotm_strip1



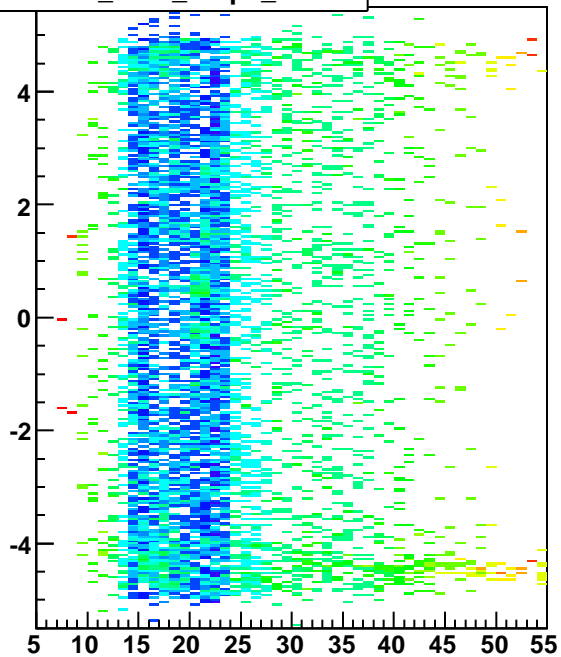
htotm_strip6



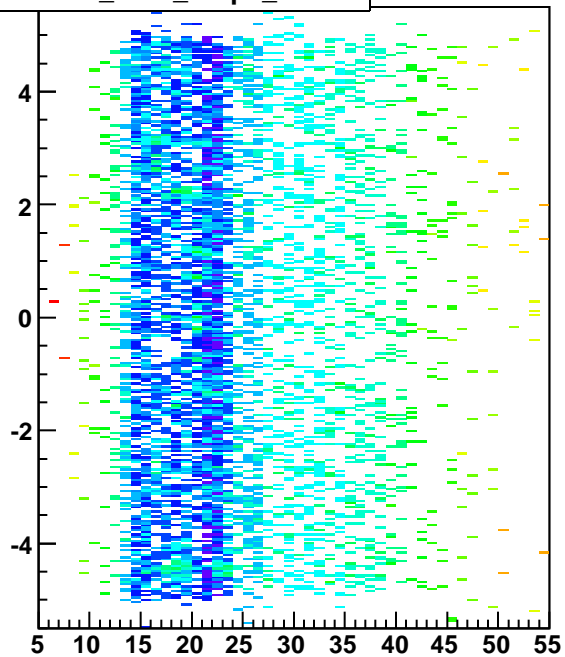
htotm_strip12



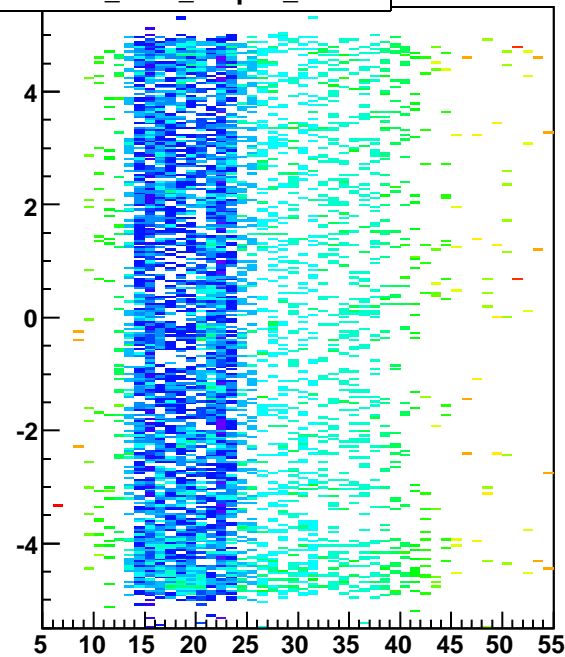
hmtdhitz_totm_strip1_norm



hmtdhitz_totm_strip6_norm



hmtdhitz_totm_strip12_norm



htotm_strip

