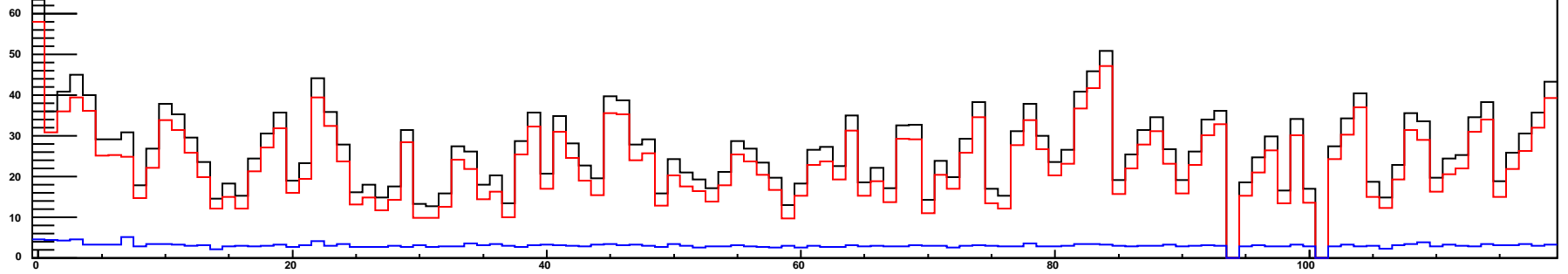
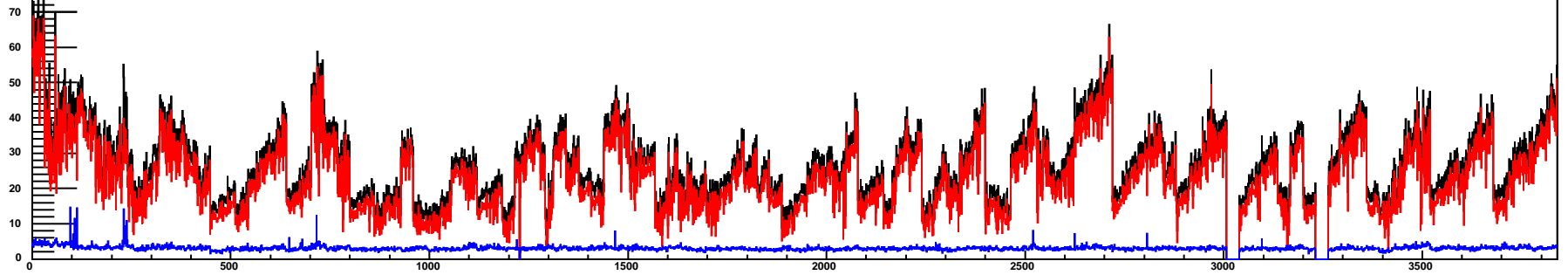


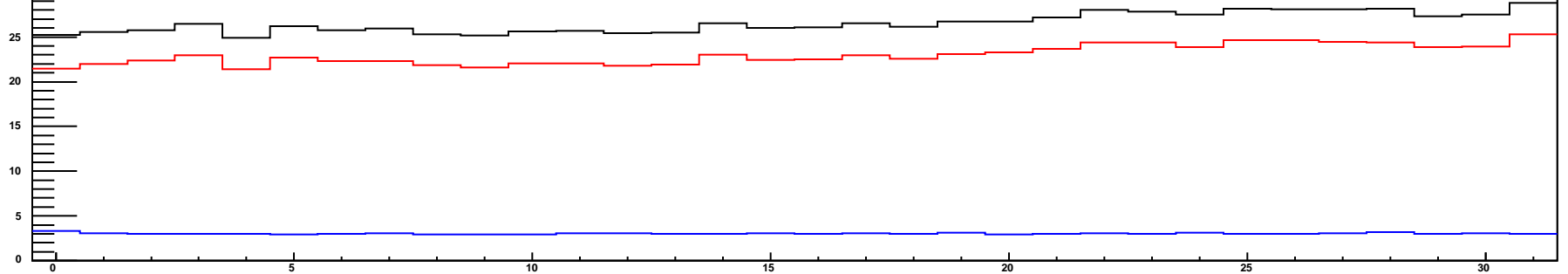
rate/cell by tray ID



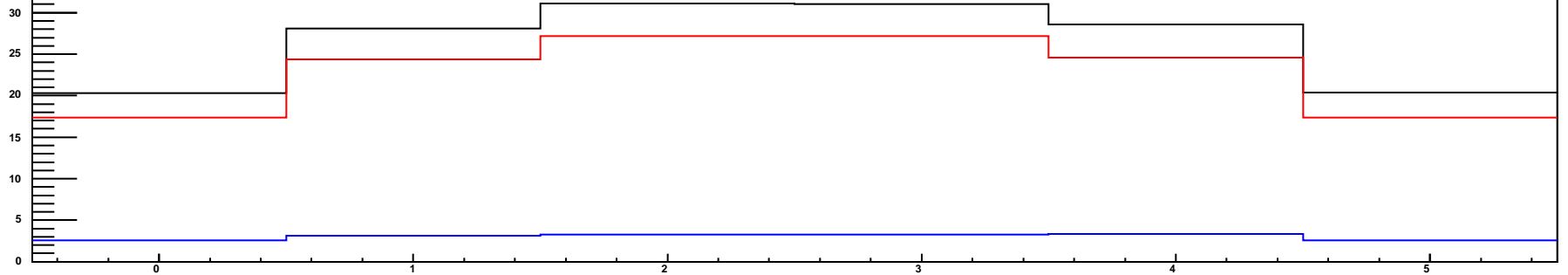
rate/cell by global module ID



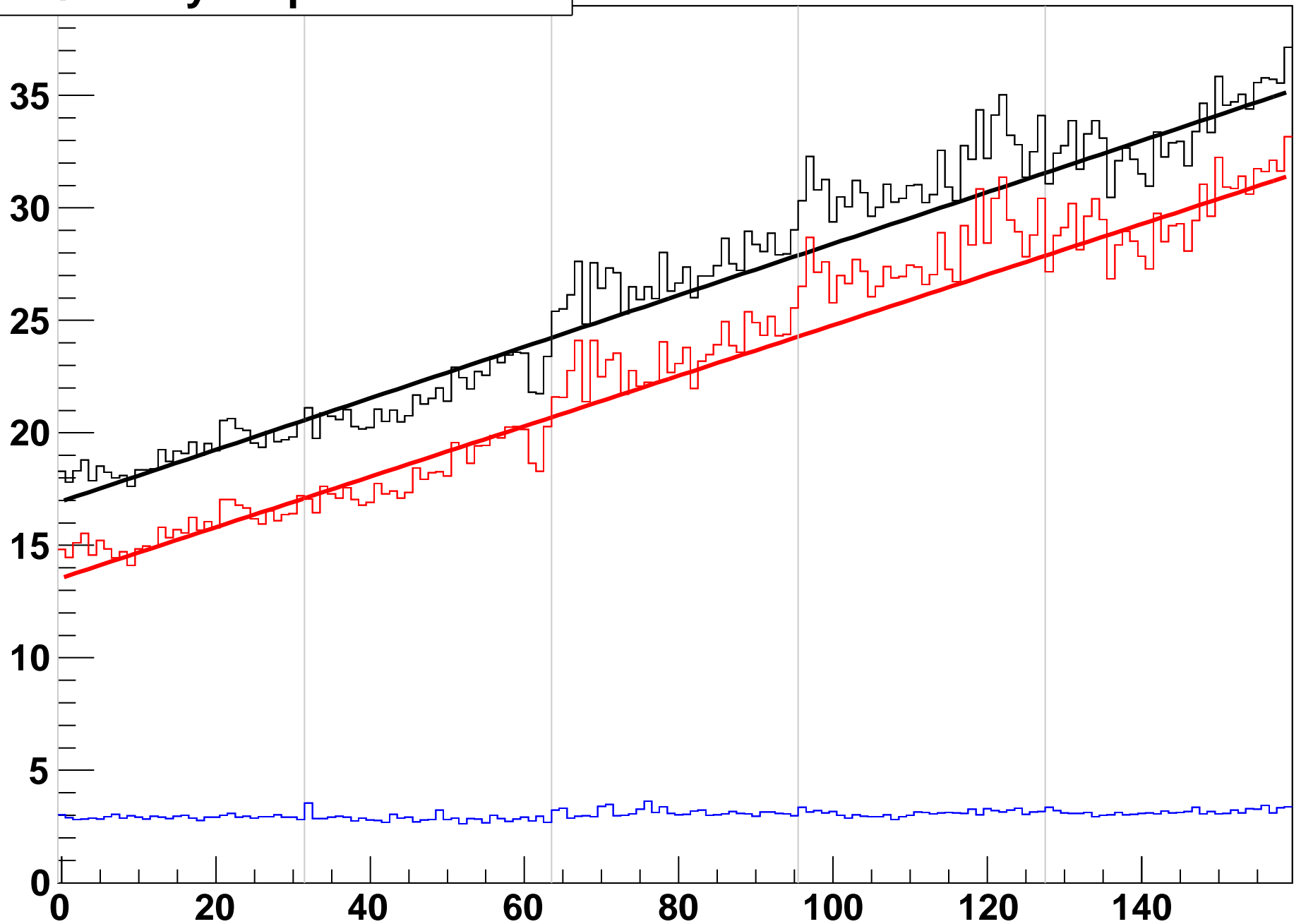
rate/cell by tray module ID



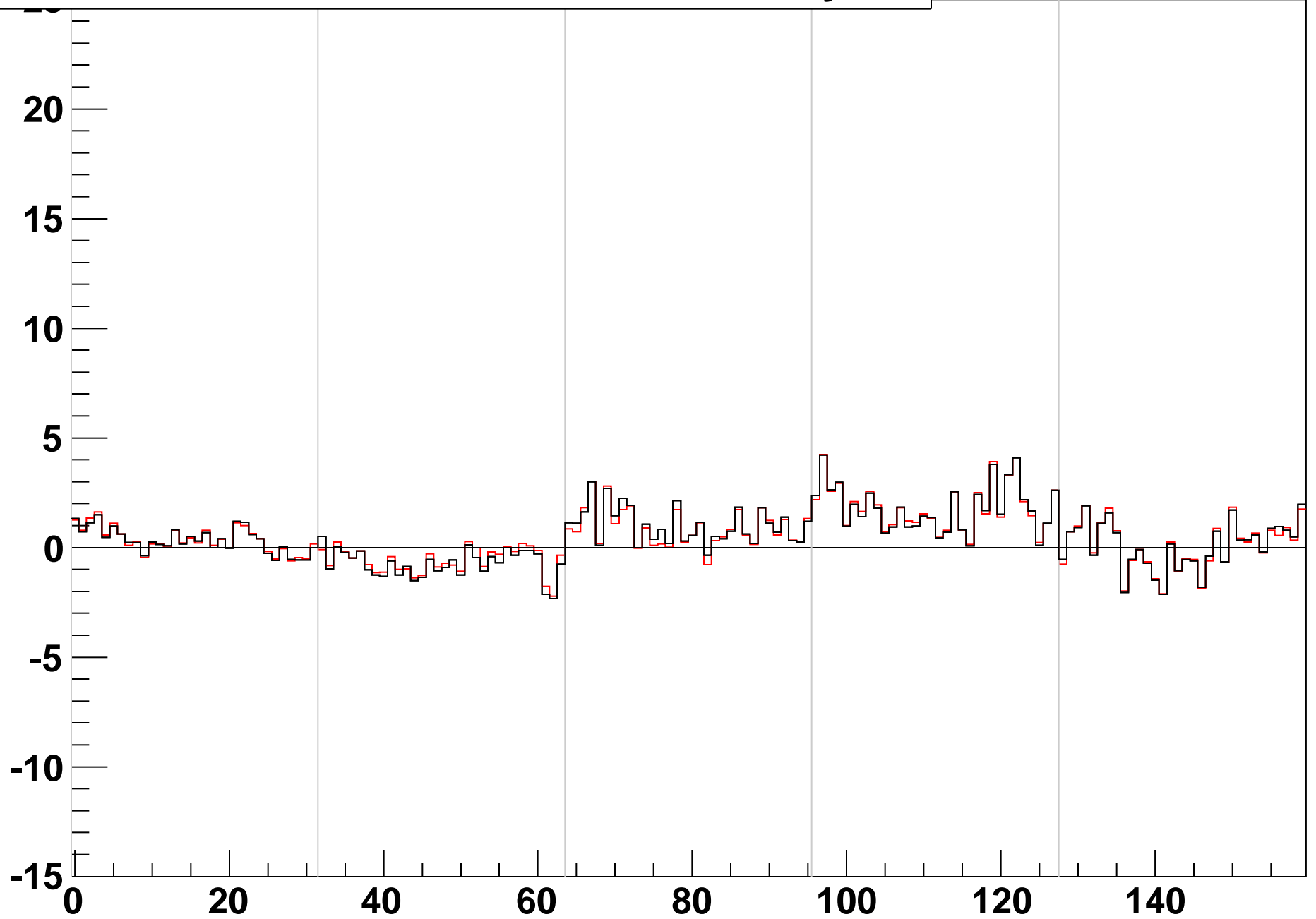
rate/cell by tray cell ID



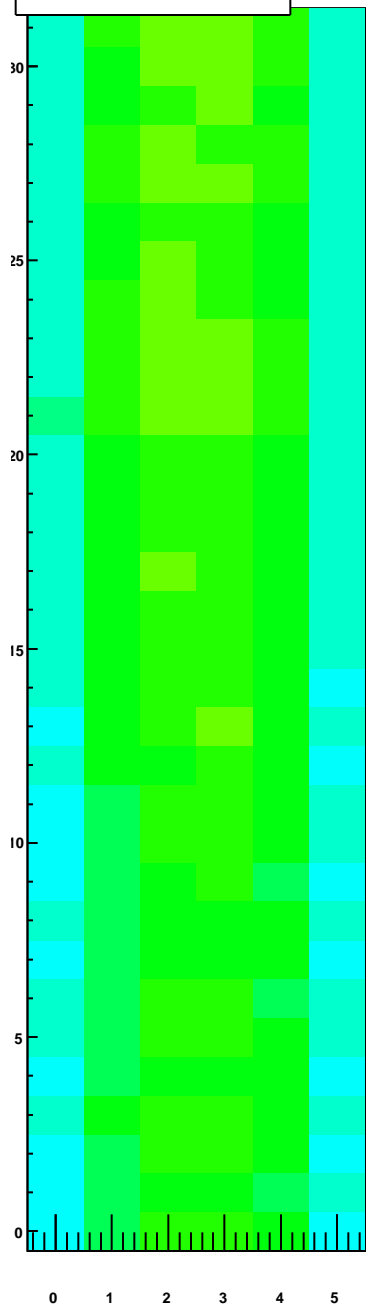
rate/cell by loop module ID



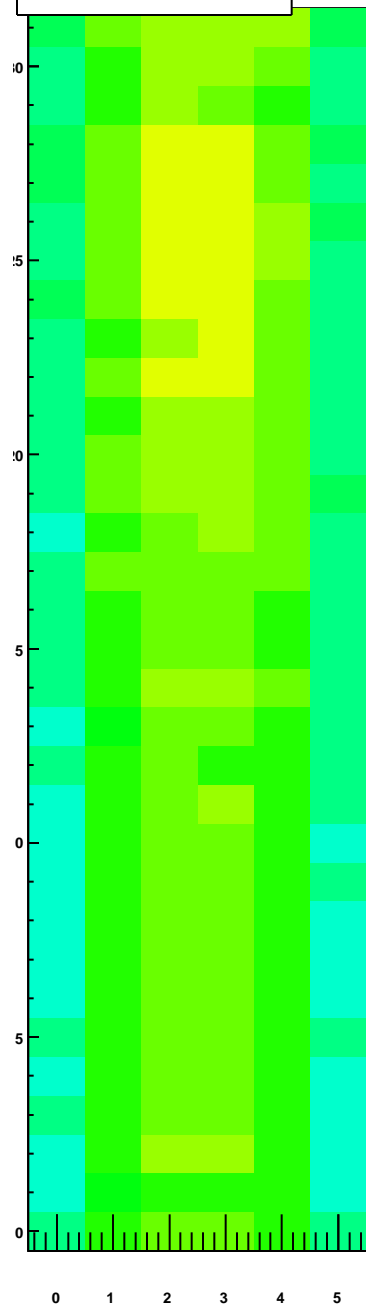
difference between noise rate and mid-tray fit



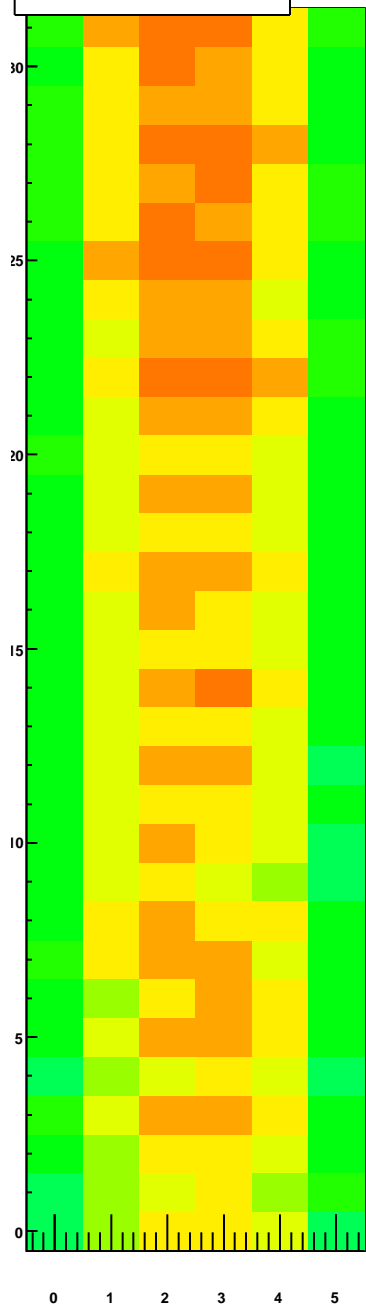
rate/cell by tray module ID, TrayIDinLoop=0



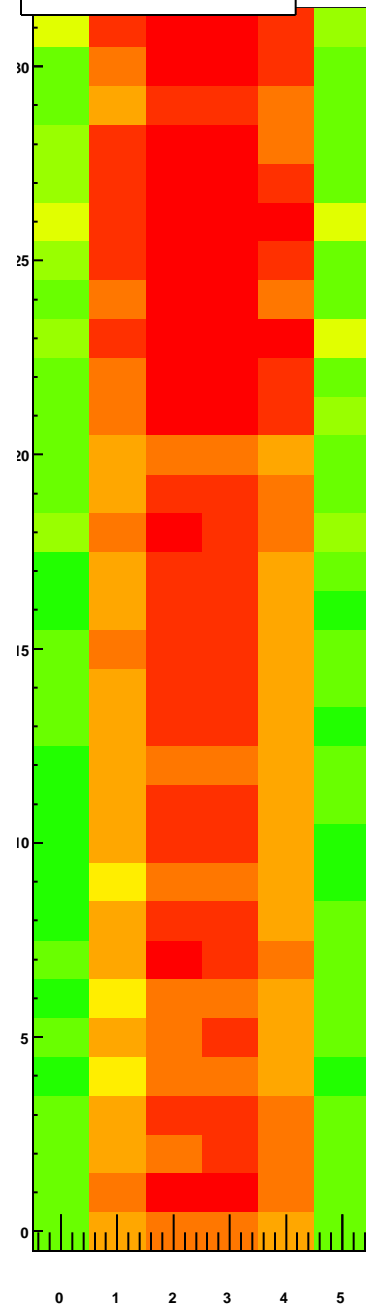
rate/cell by tray module ID, TrayIDinLoop=1



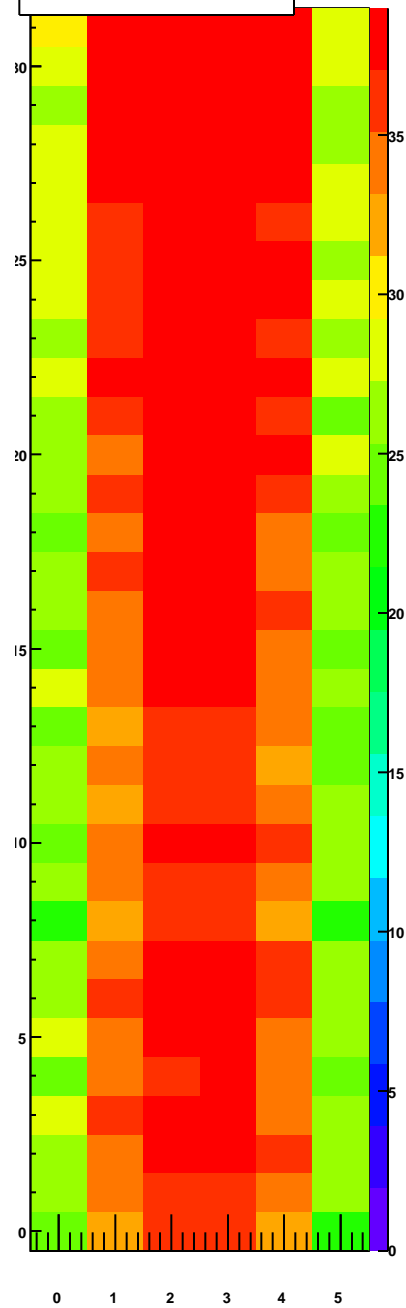
rate/cell by tray module ID, TrayIDinLoop=2



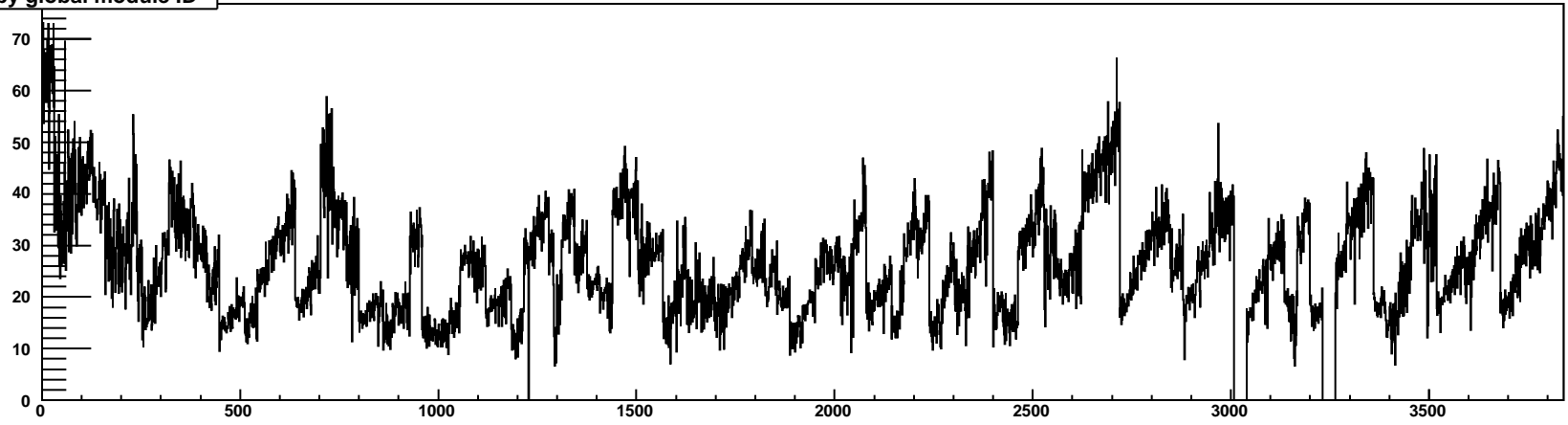
rate/cell by tray module ID, TrayIDinLoop=3



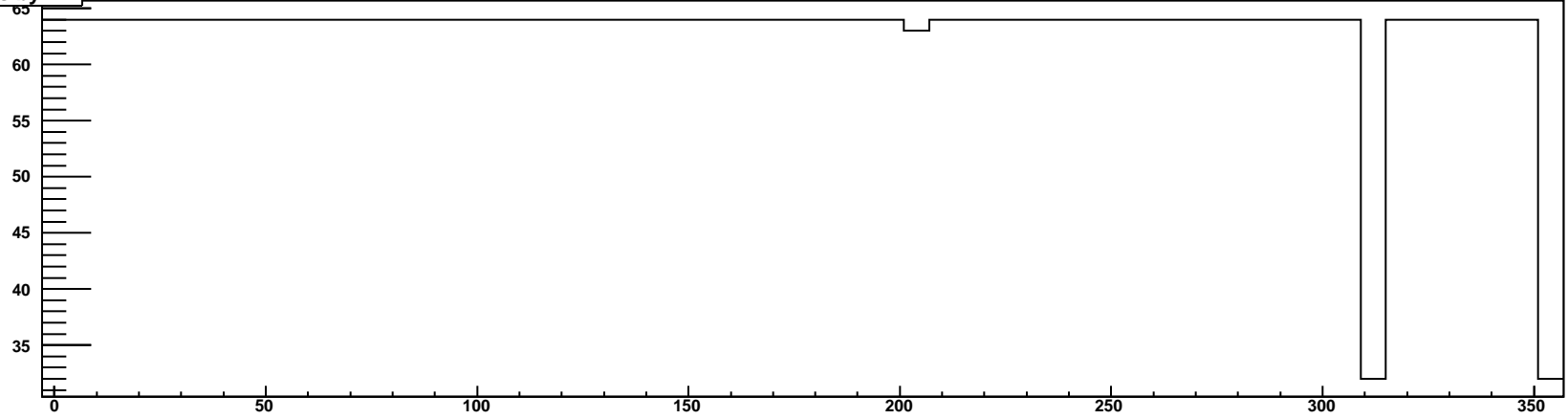
rate/cell by tray module ID, TrayIDinLoop=4



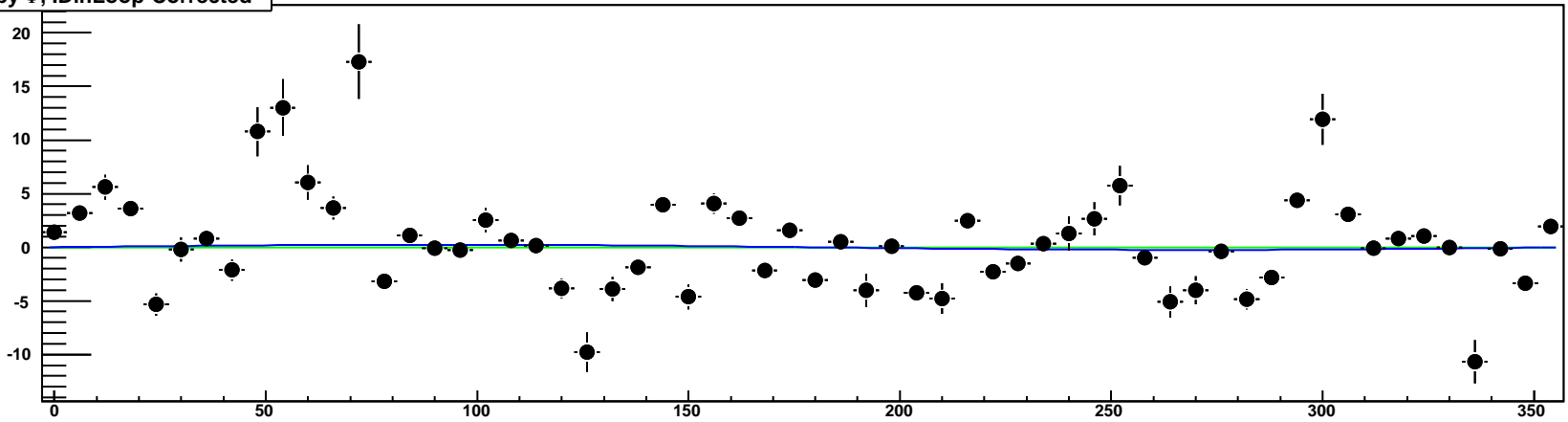
rate/cell by global module ID



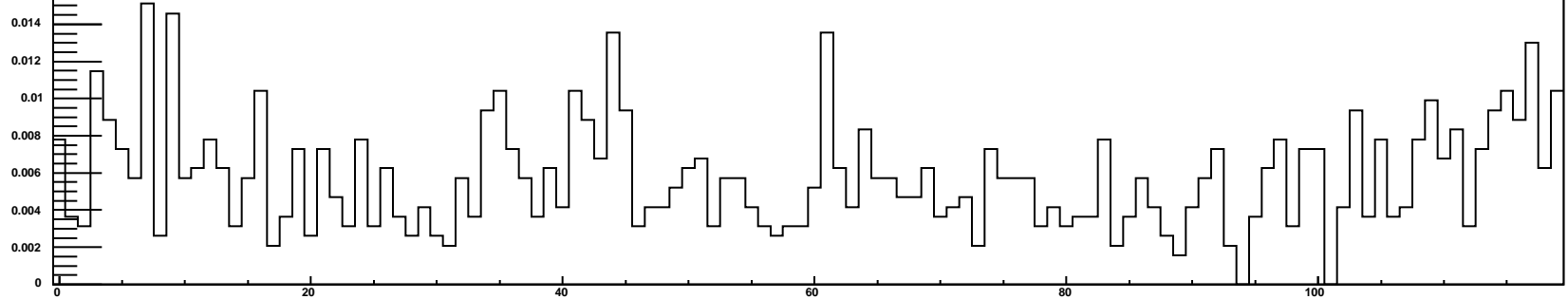
NModules by Φ



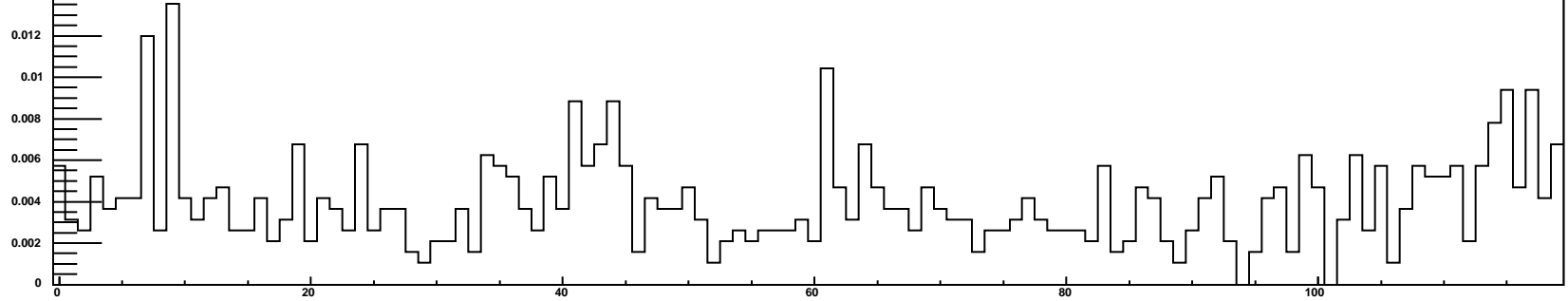
rate/cell by Φ , IDinLoop-Corrected



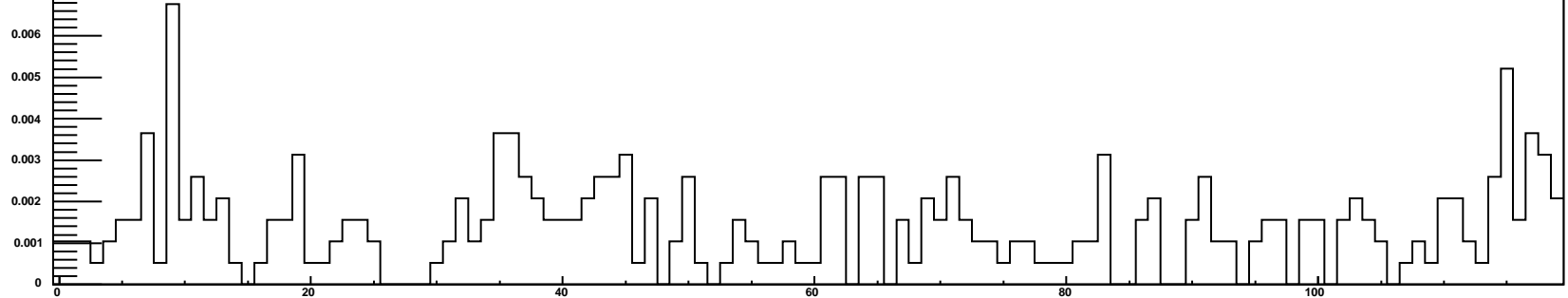
rate/cell by tray ID, nHits/tray/ev>25



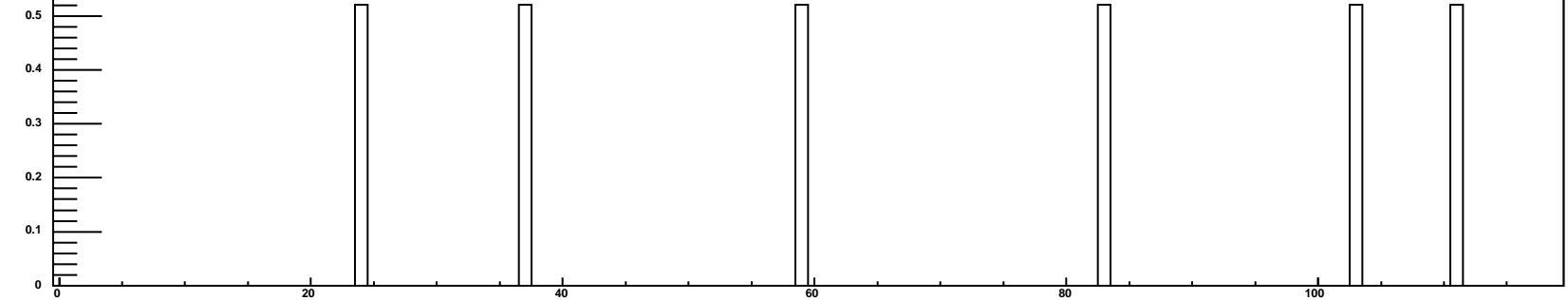
rate/cell by tray ID, nHits/tray/ev>50



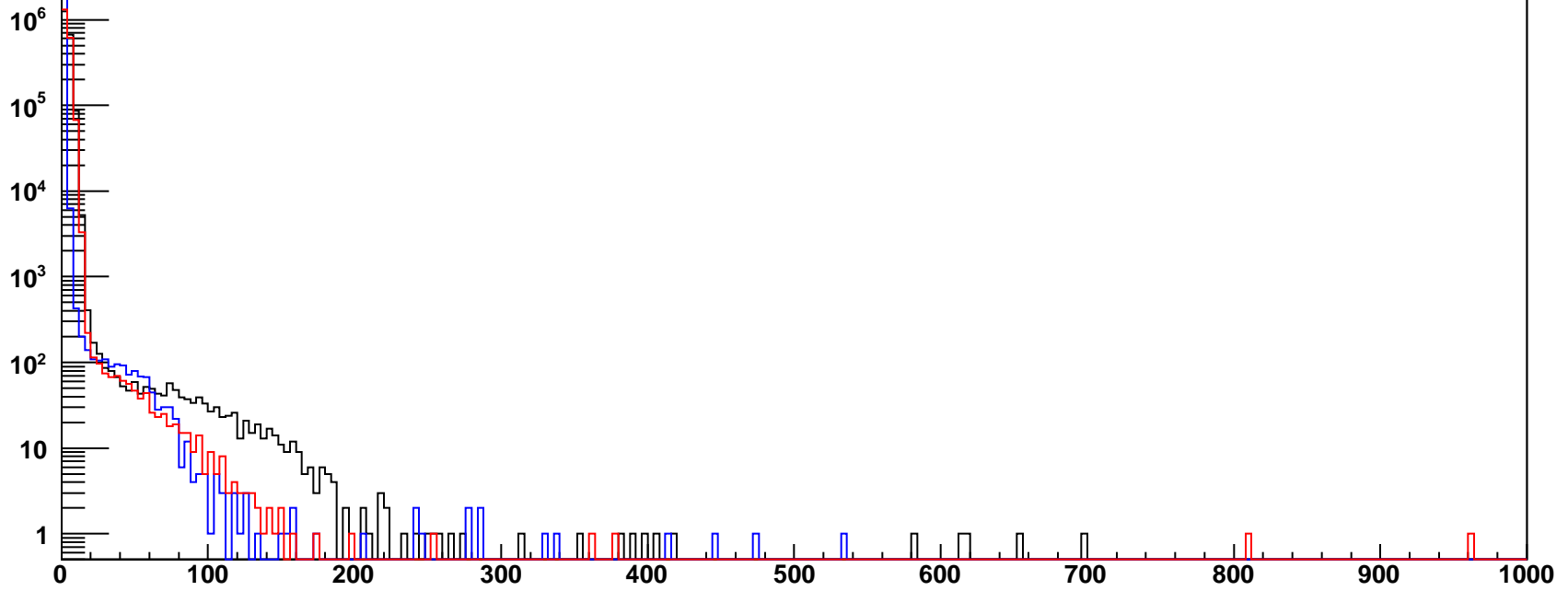
rate/cell by tray ID, nHits/tray/ev>100



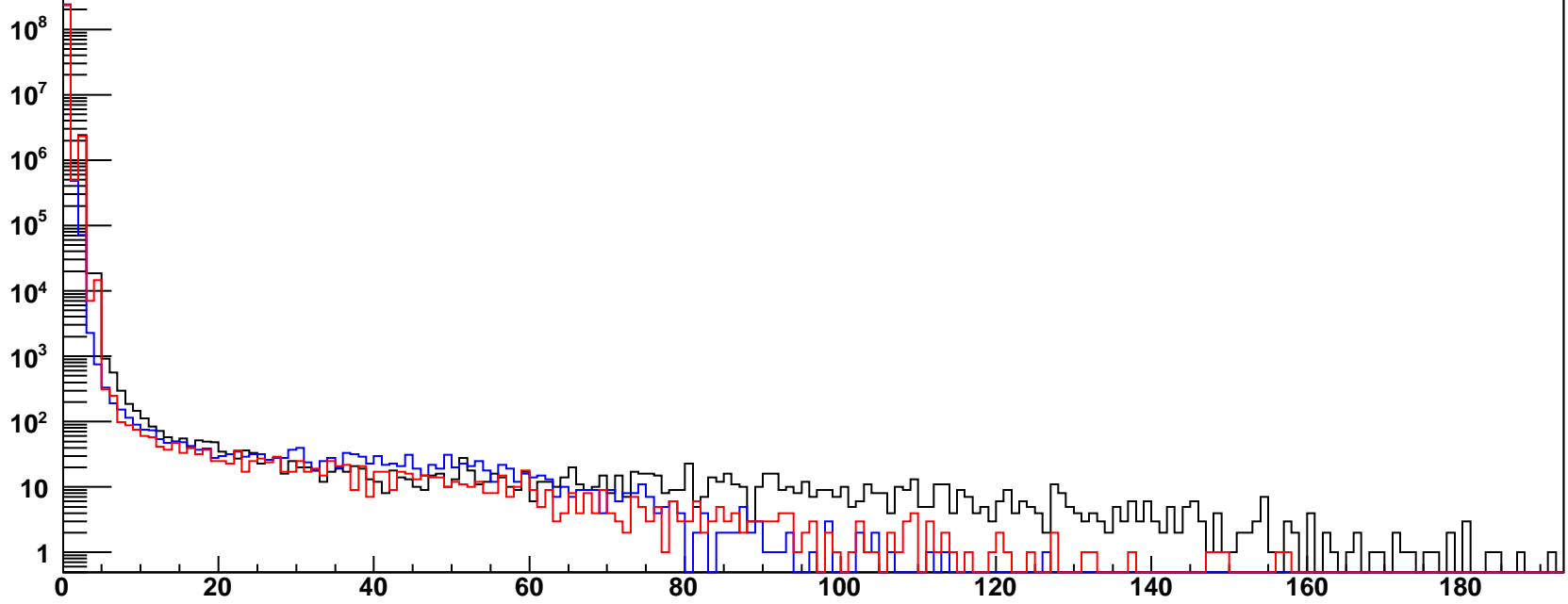
rate/cell by tray ID, nHits/tray/ev>190

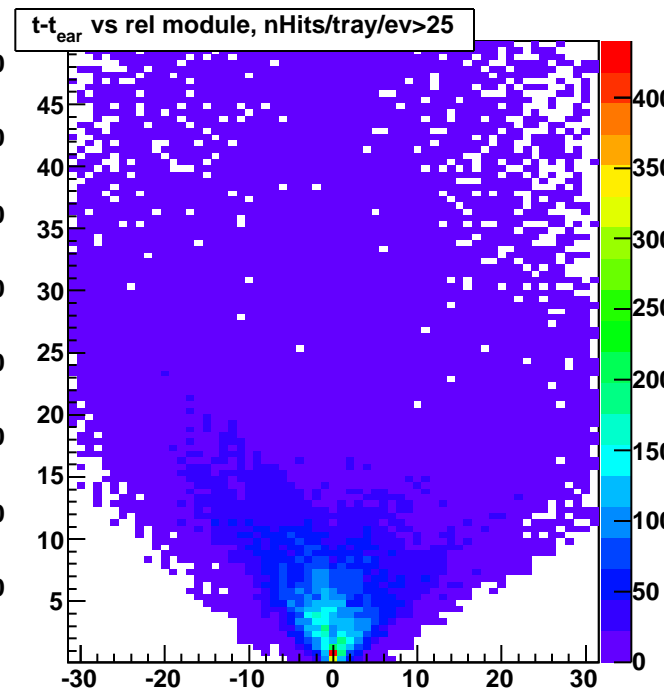
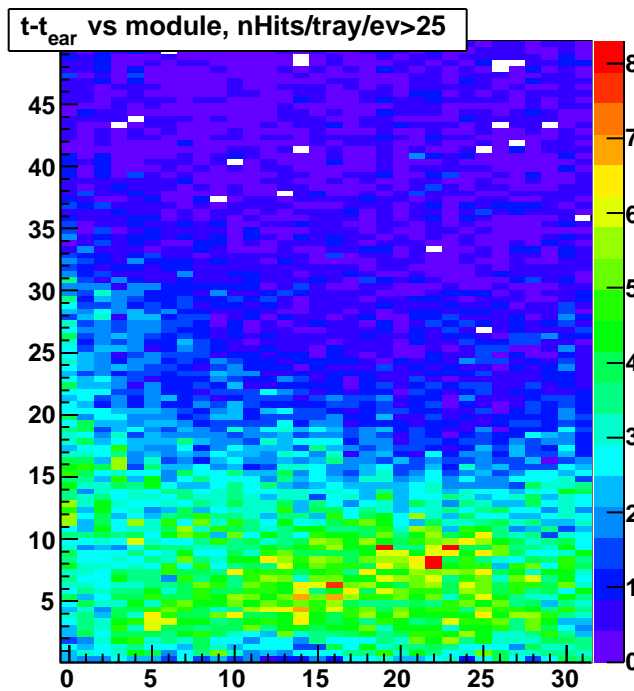
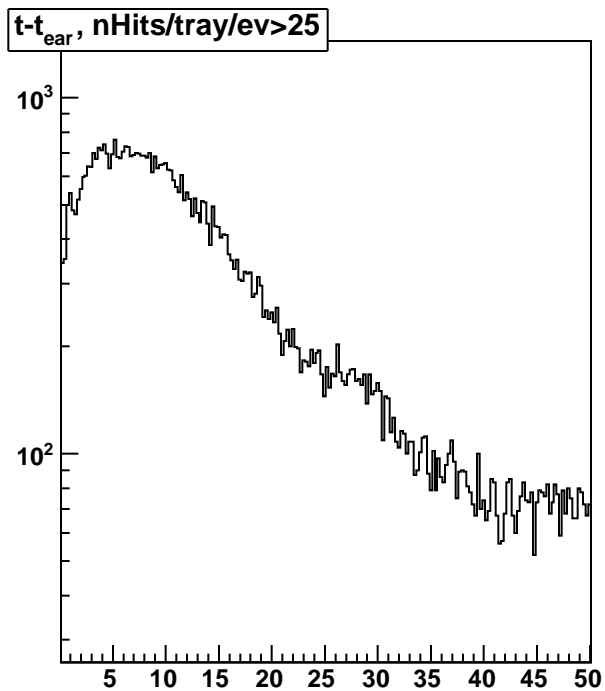
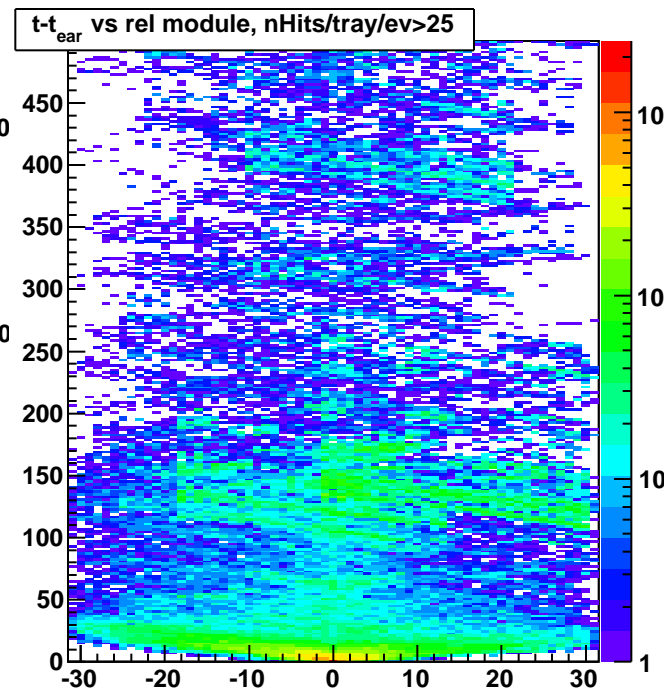
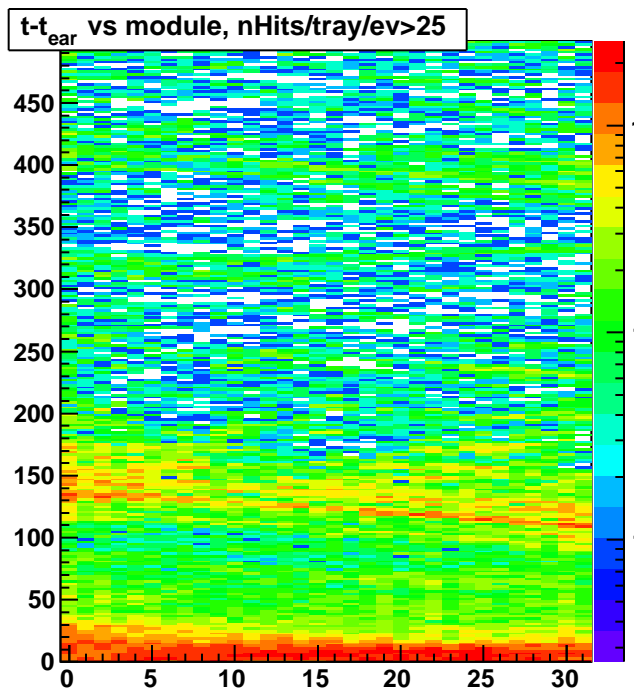
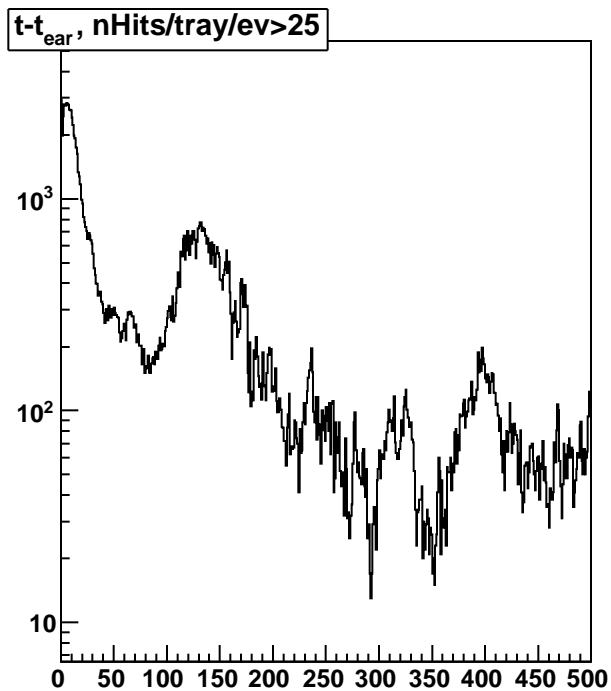


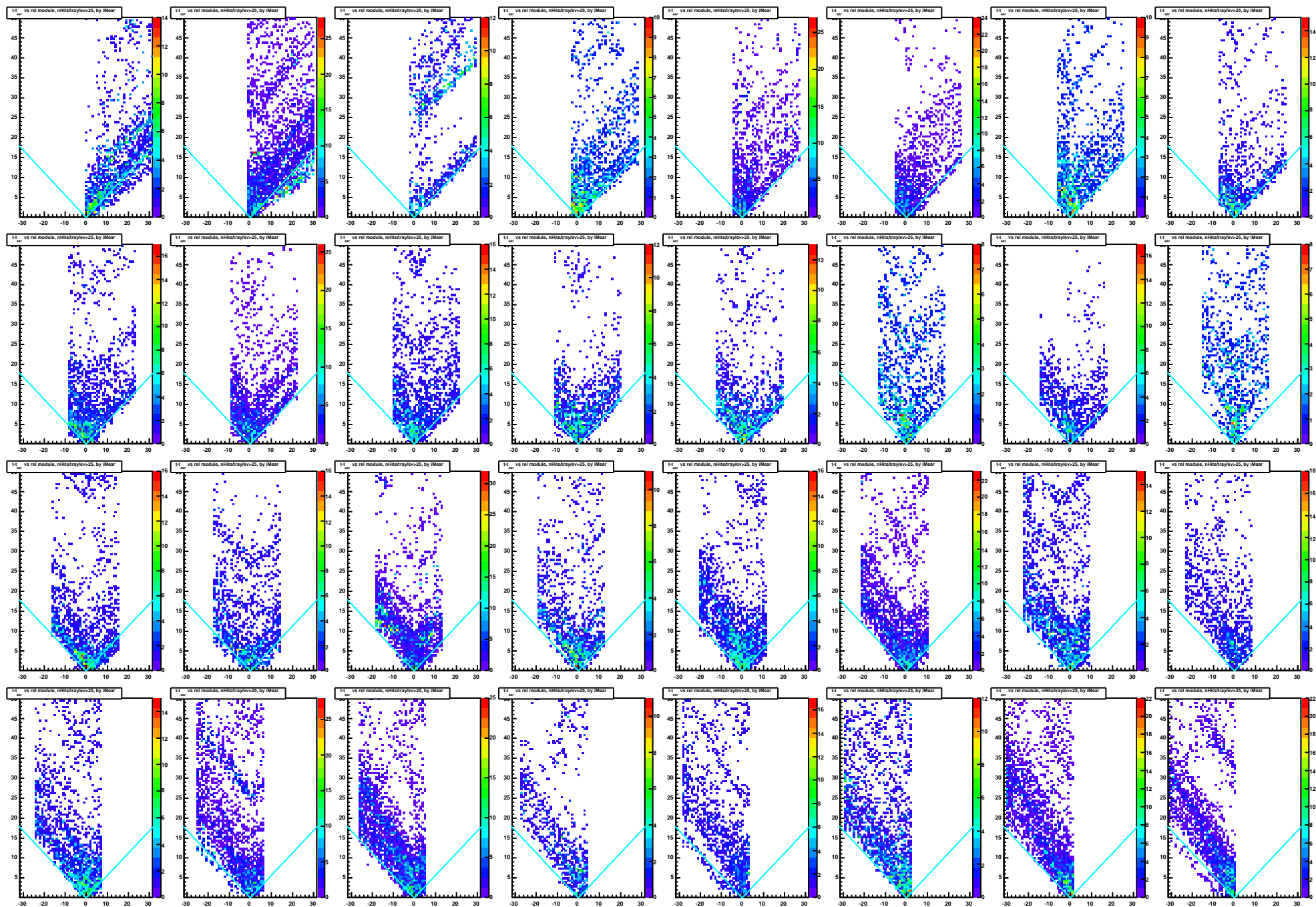
nHits/ev, ToT range

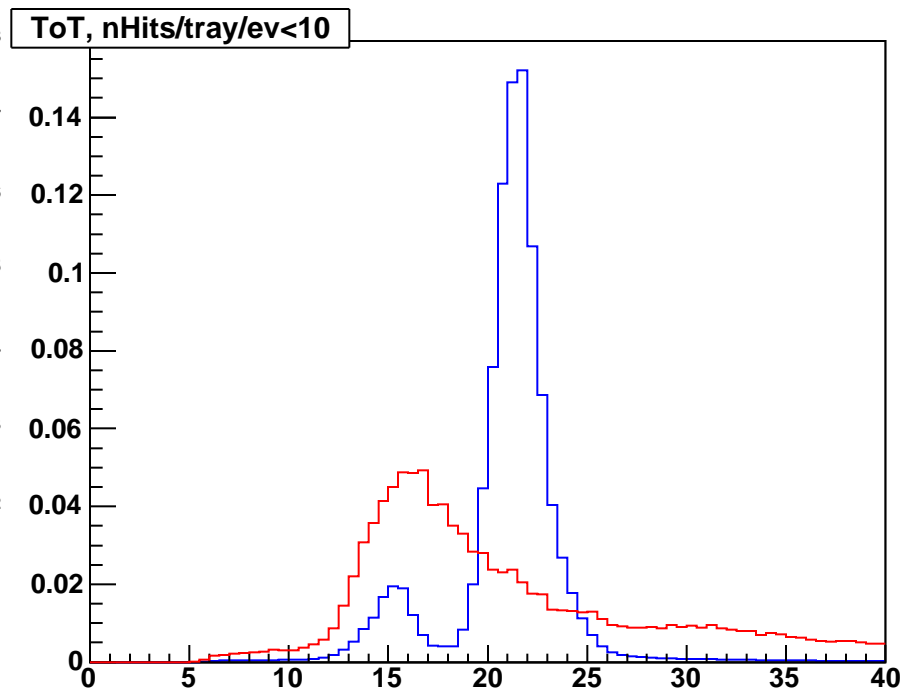
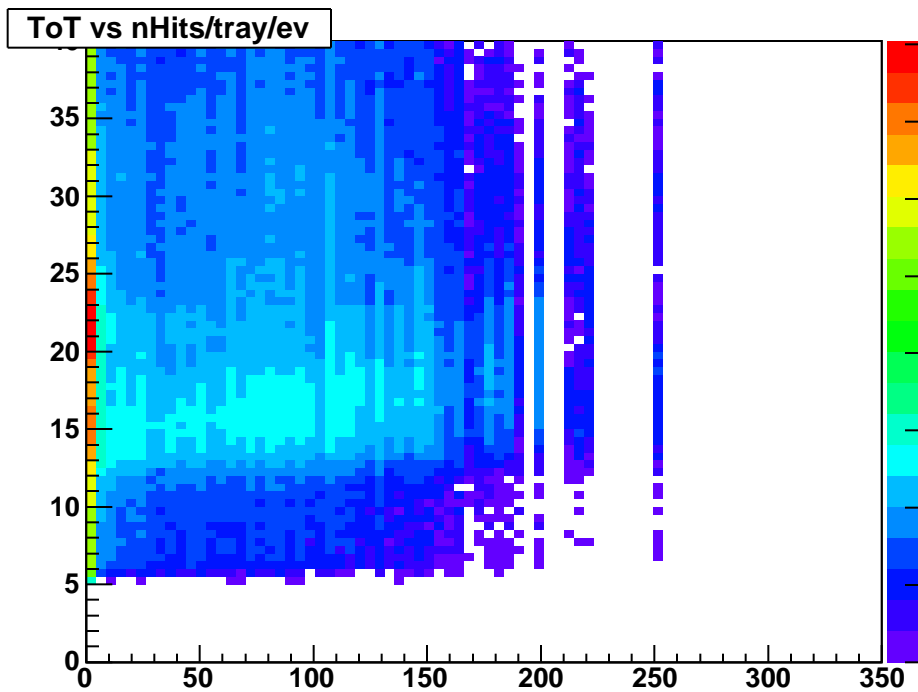
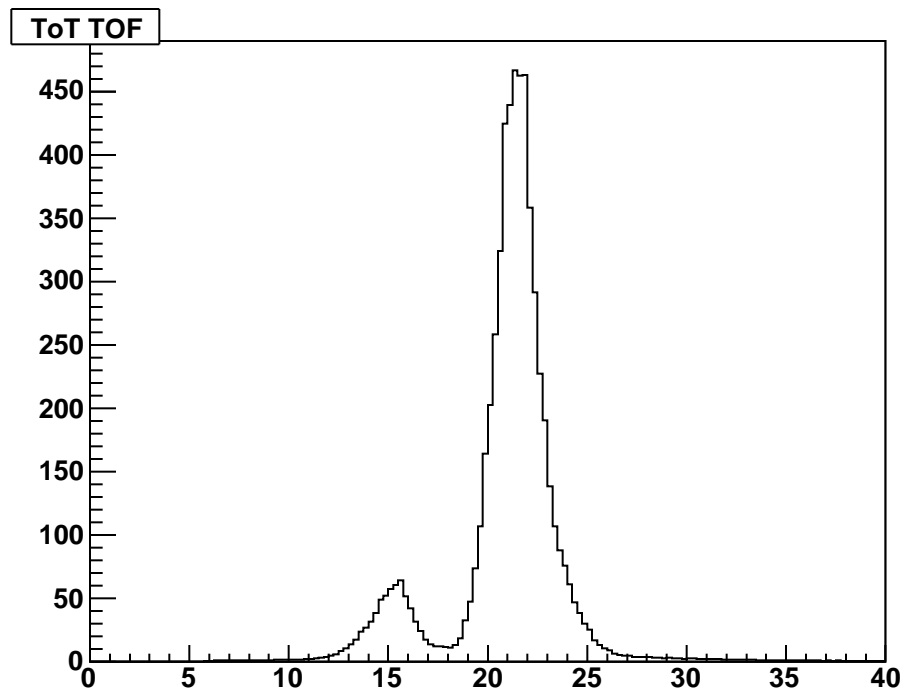
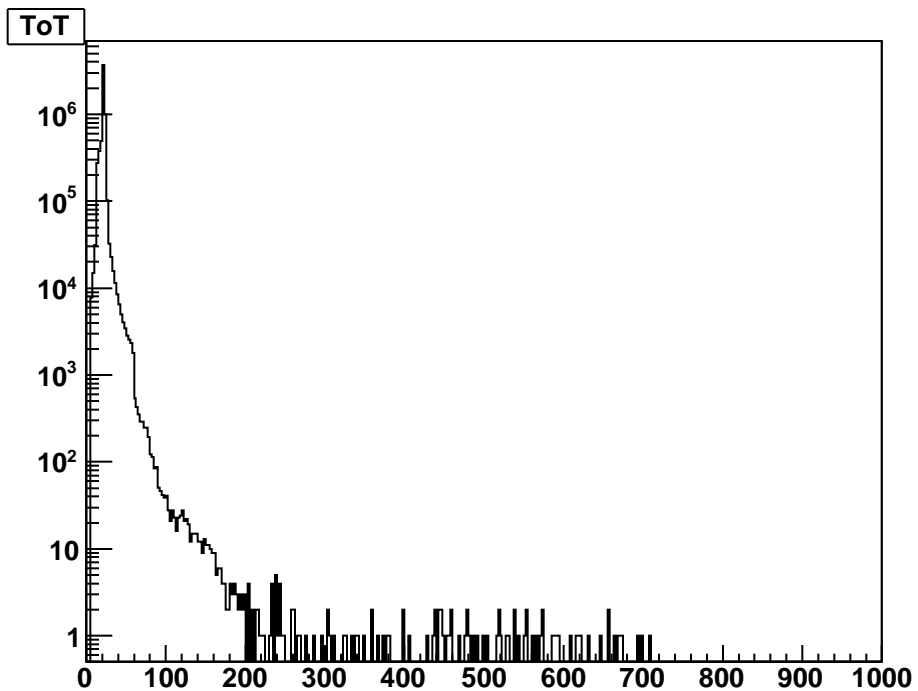


nHits/tray/ev, ToT range



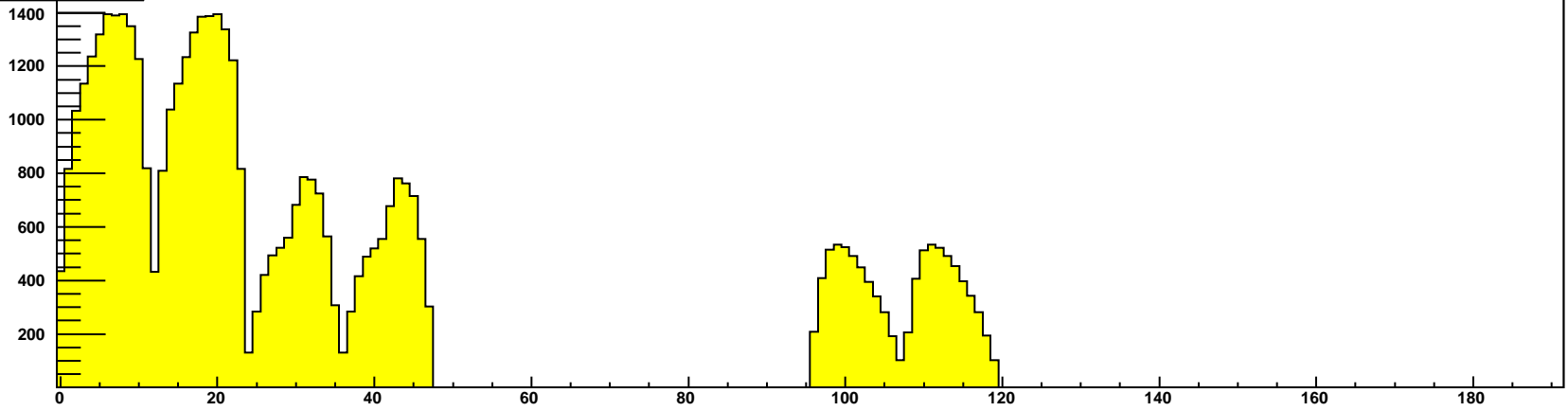




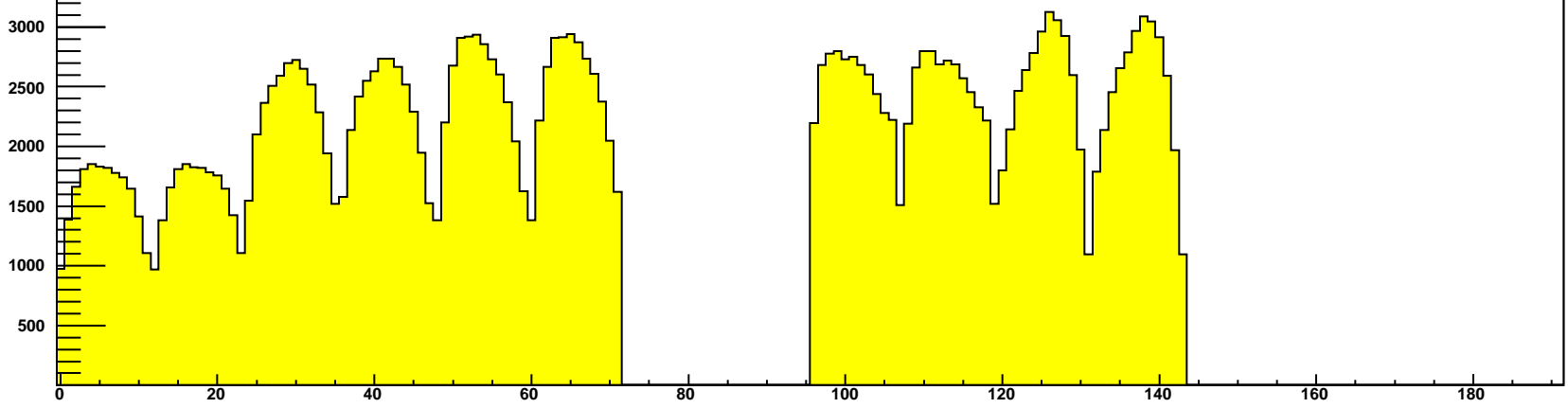




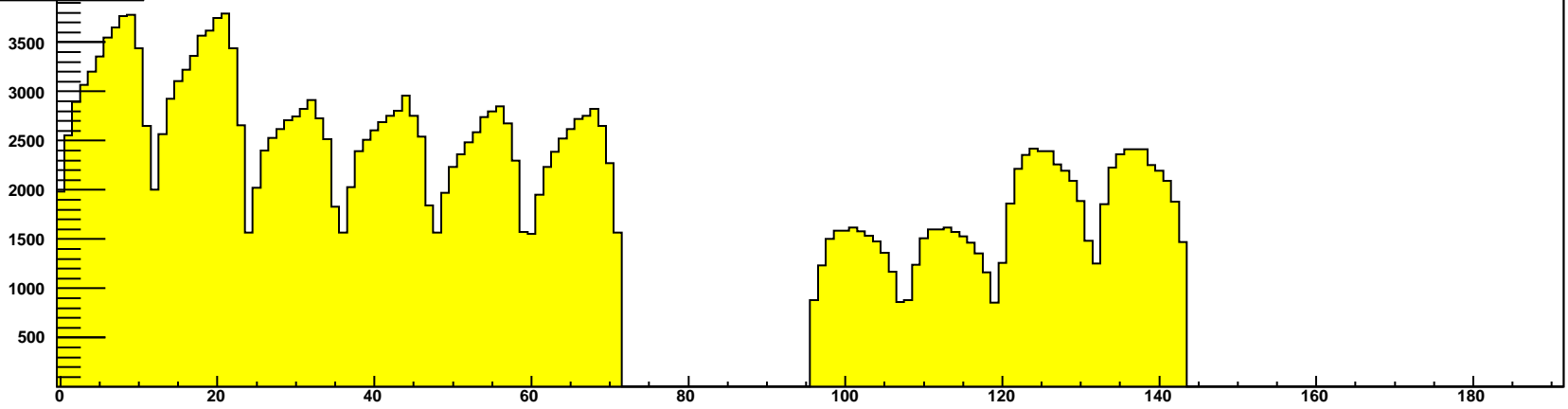
mtd cell, backlog 26



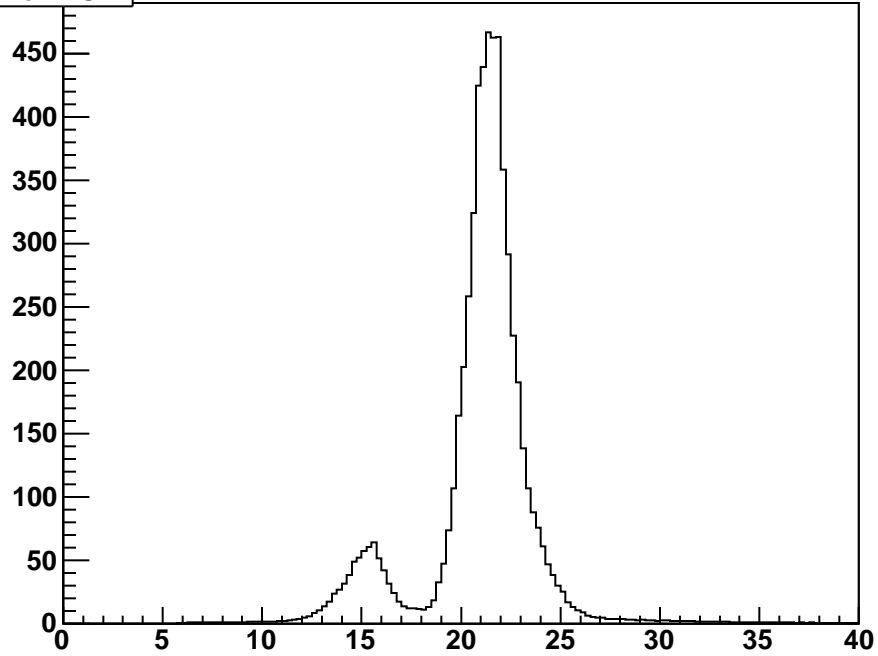
mtd cell, backlog 27



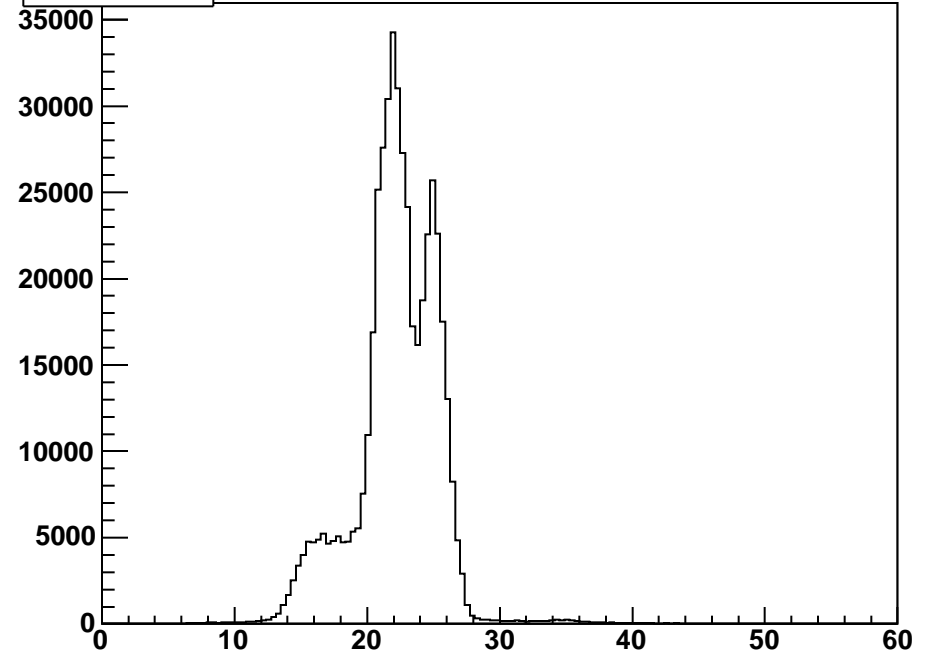
mtd cell, backlog 28



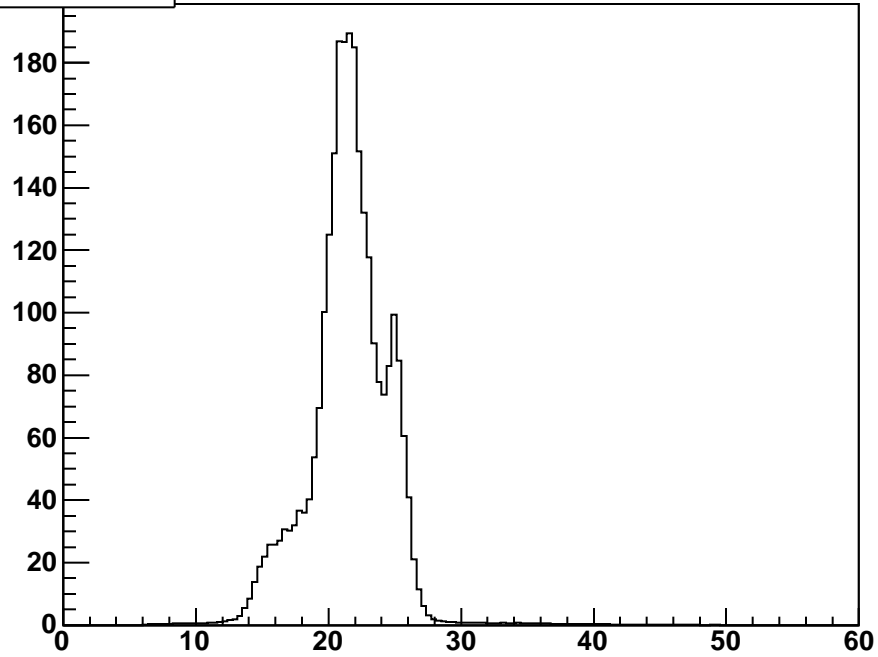
ToT TOF



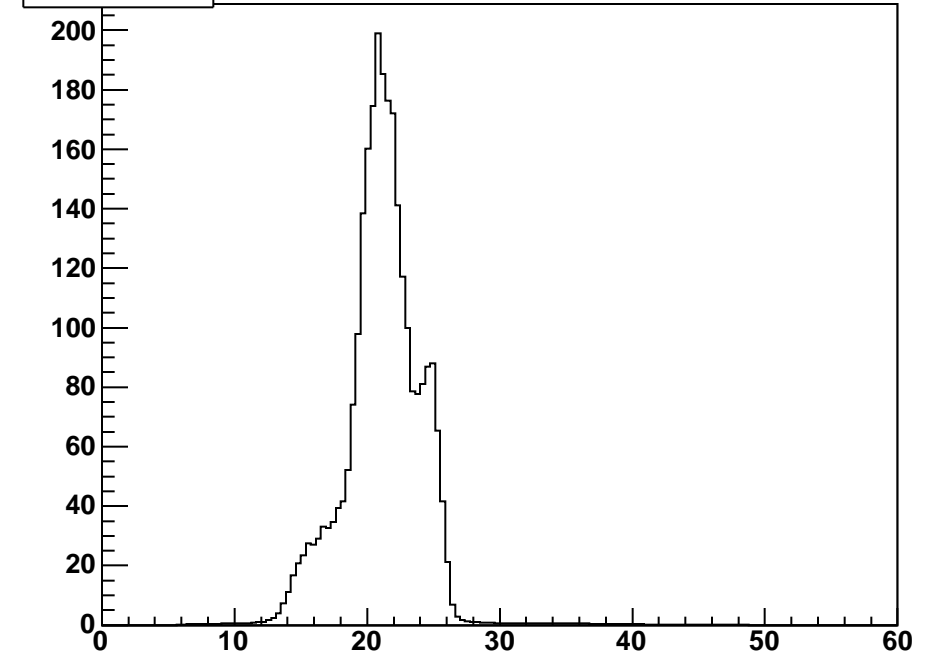
ToT MTD26



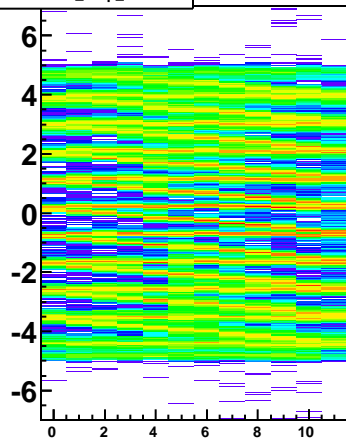
ToT MTD27



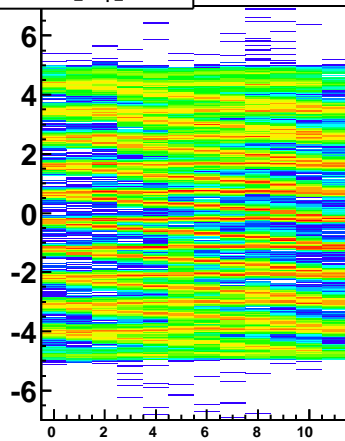
ToT MTD28



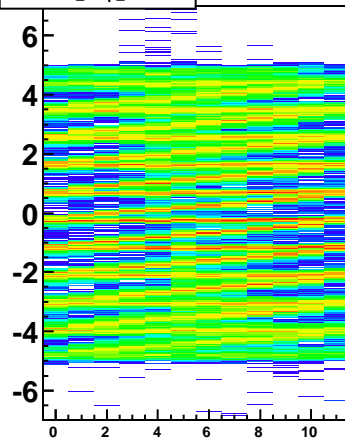
hmdhitz_strip_zoff027



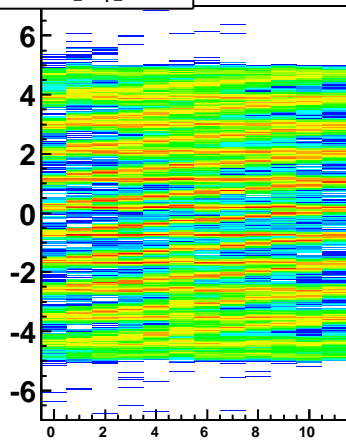
hmdhitz_strip_zoff127



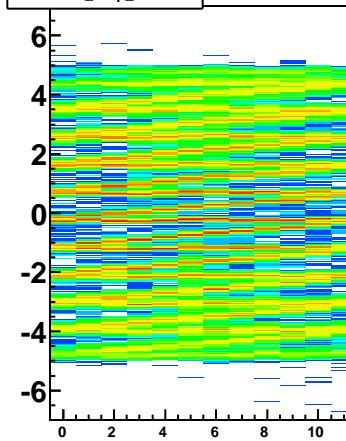
hmdhitz_strip_zoff227



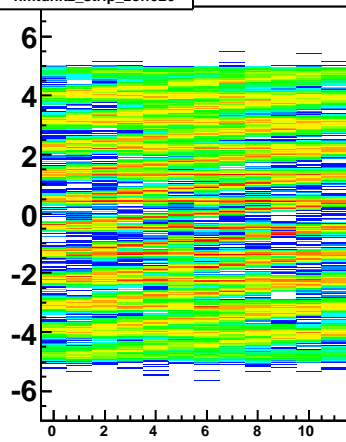
hmdhitz_strip_zoff327



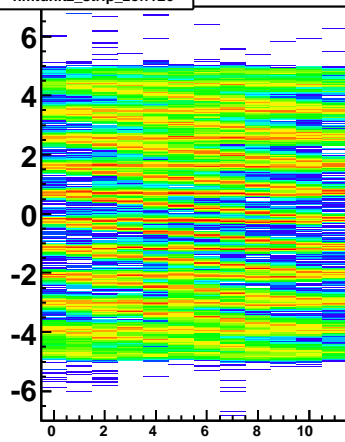
hmdhitz_strip_zoff427



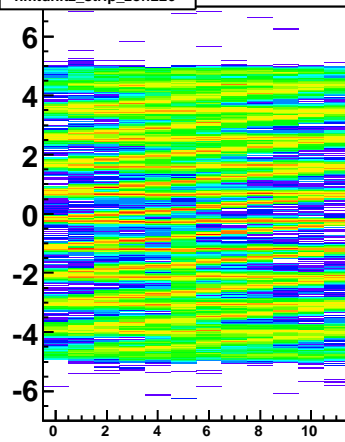
hmdhitz_strip_zoff026



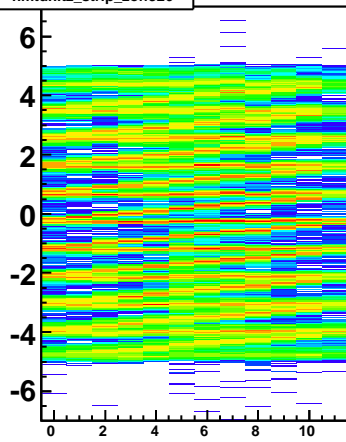
hmdhitz_strip_zoff126



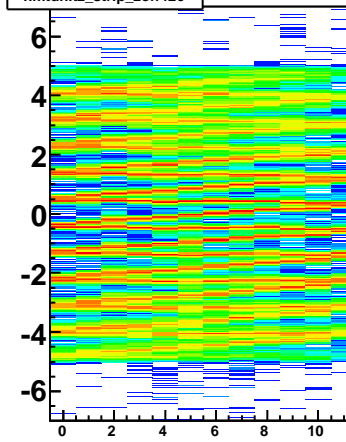
hmdhitz_strip_zoff226



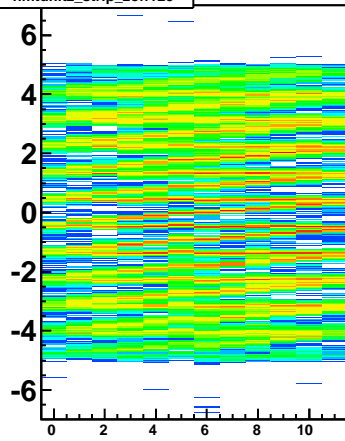
hmdhitz_strip_zoff326



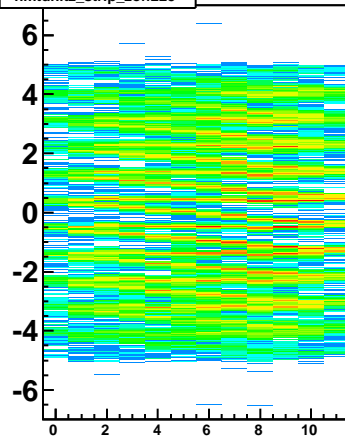
hmdhitz_strip_zoff426



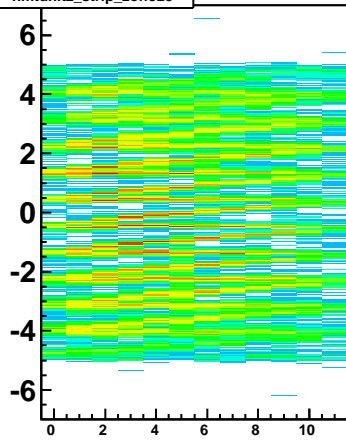
hmdhitz_strip_zoff125



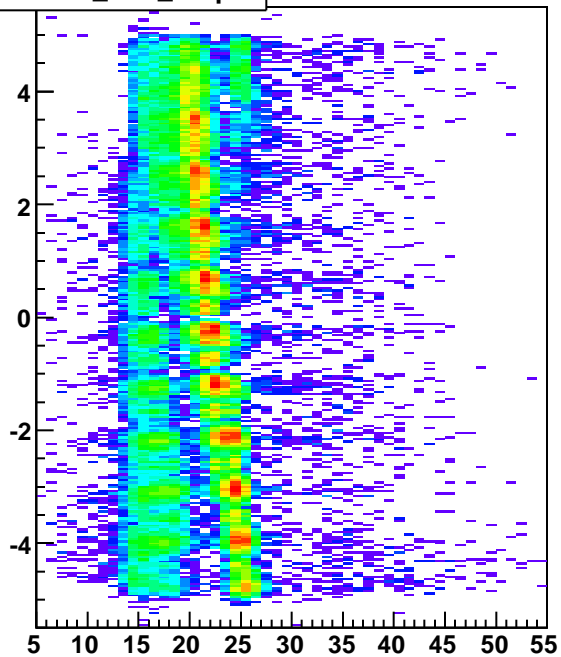
hmdhitz_strip_zoff225



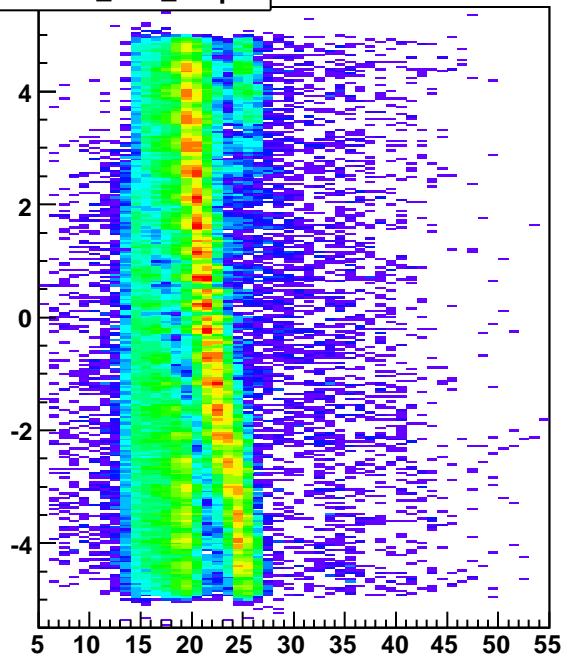
hmdhitz_strip_zoff325



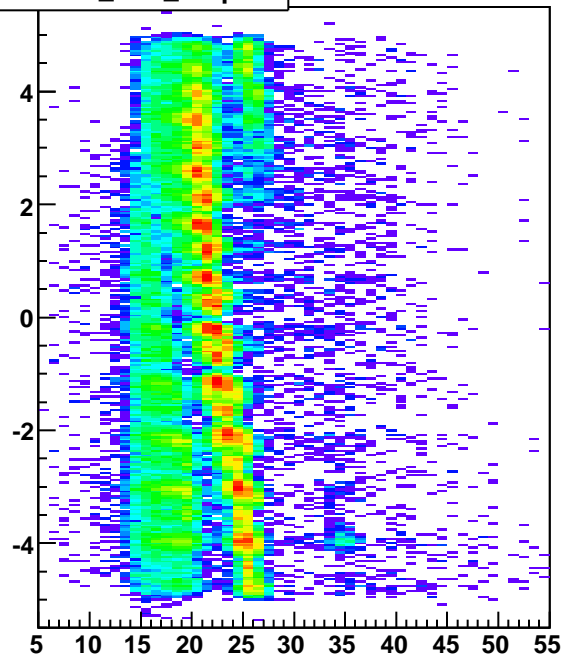
hmtdhitz_tota_strip1



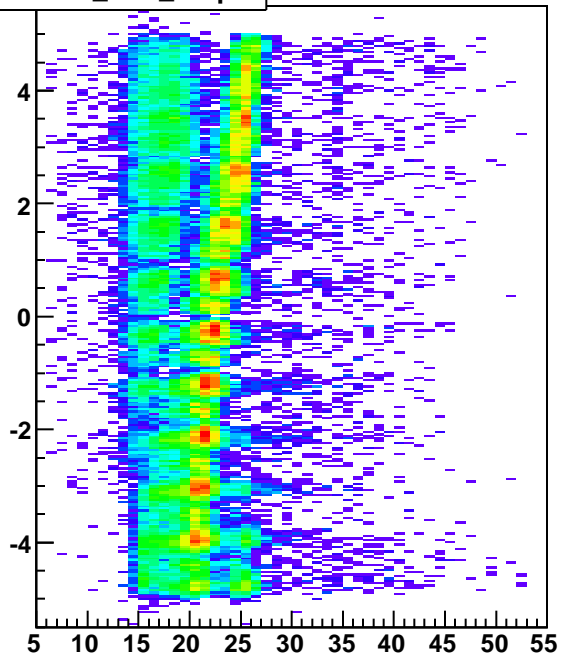
hmtdhitz_tota_strip6



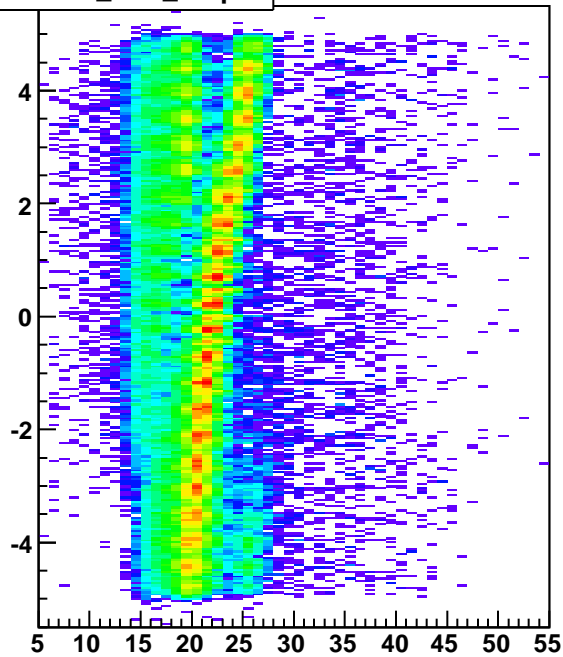
hmtdhitz_tota_strip12



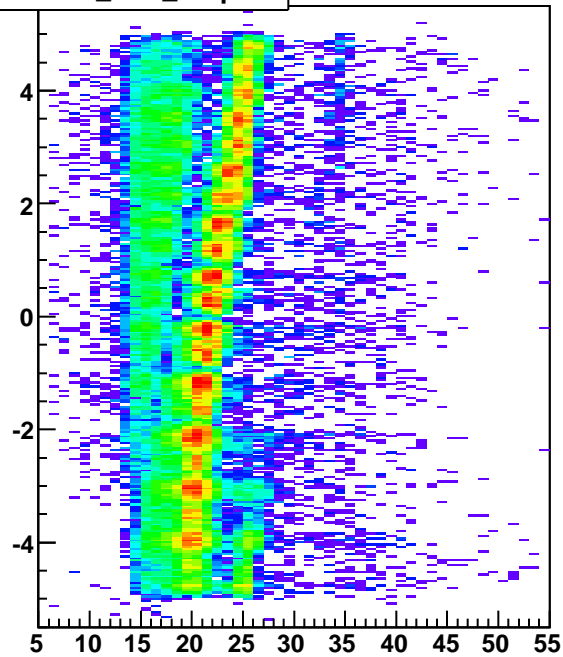
hmtdhitz_totb_strip1



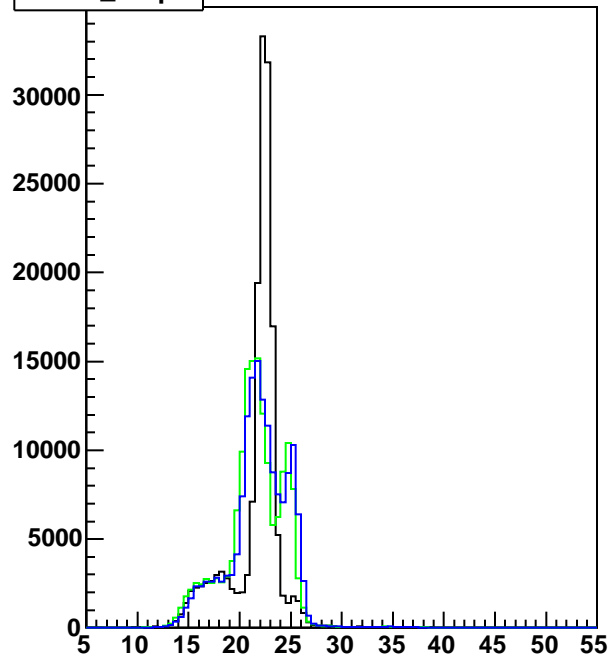
hmtdhitz_totb_strip6



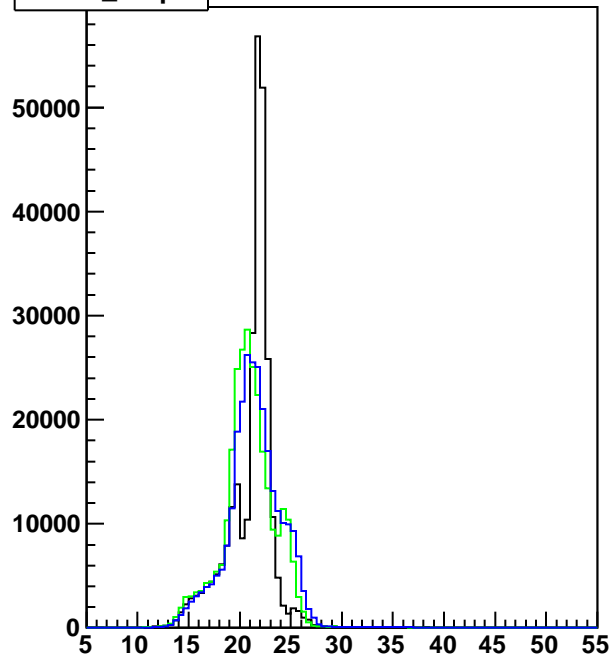
hmtdhitz_totb_strip12



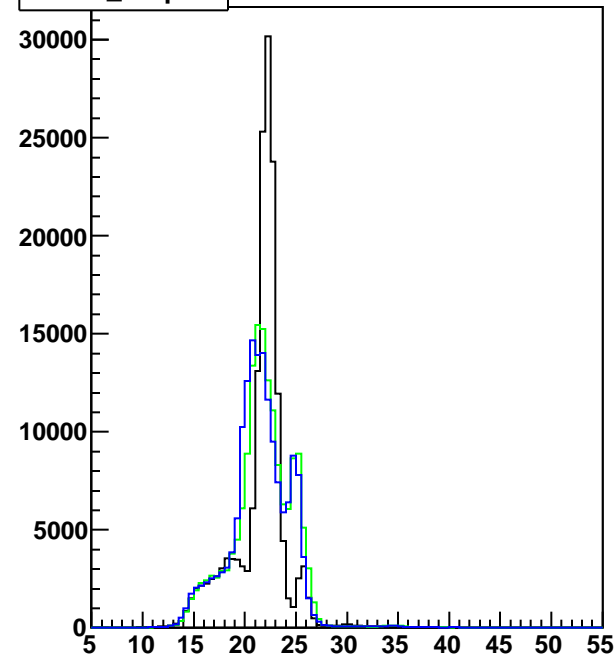
htotm_strip1



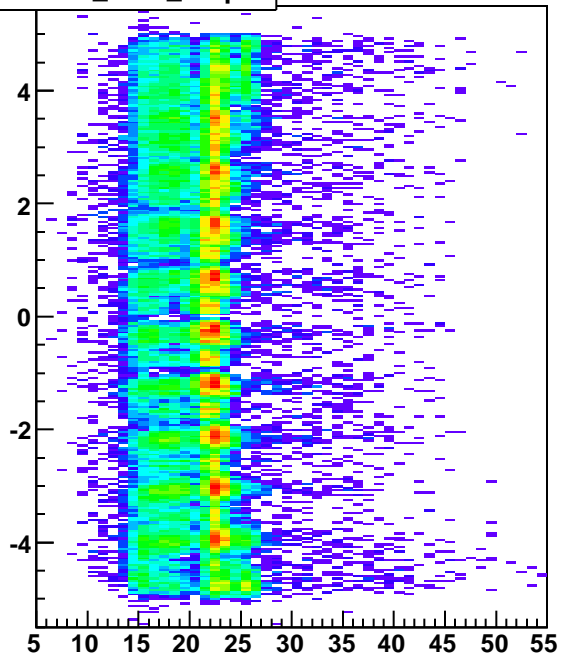
htotm_strip6



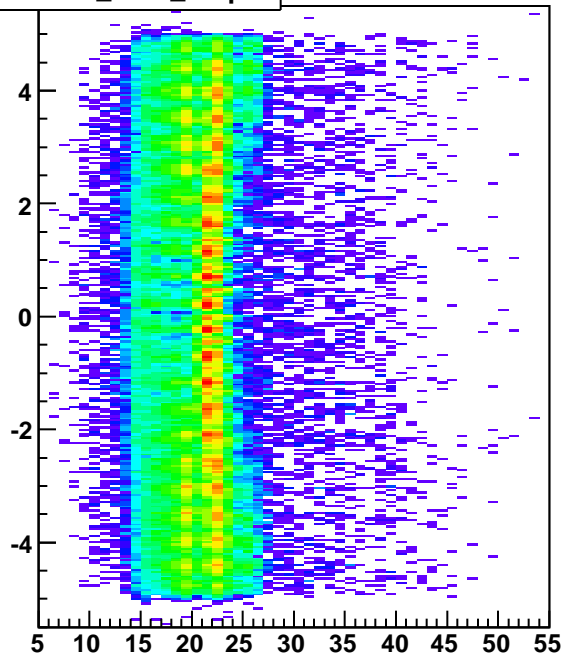
htotm_strip12



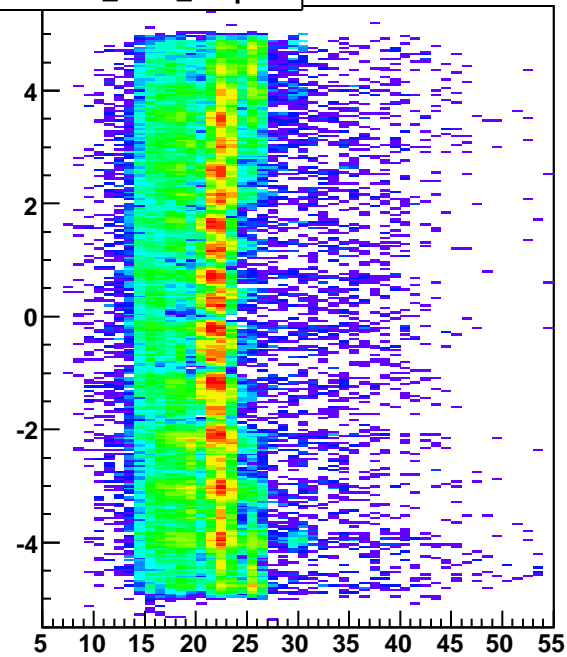
hmtdhitz_totm_strip1



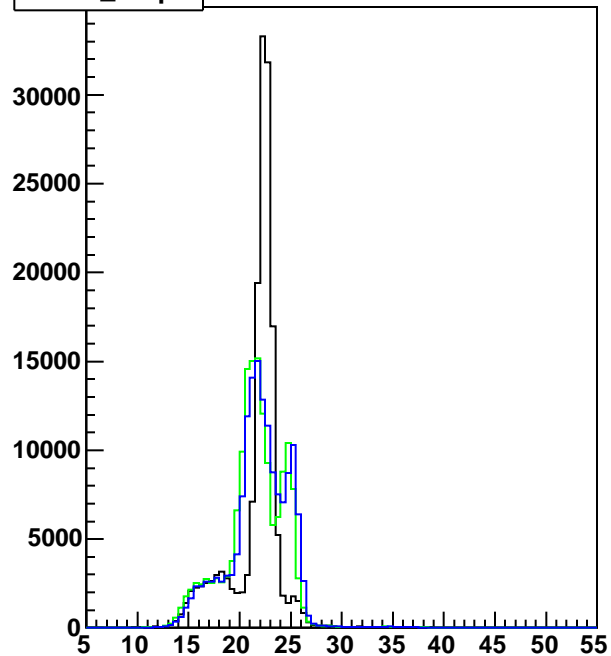
hmtdhitz_totm_strip6



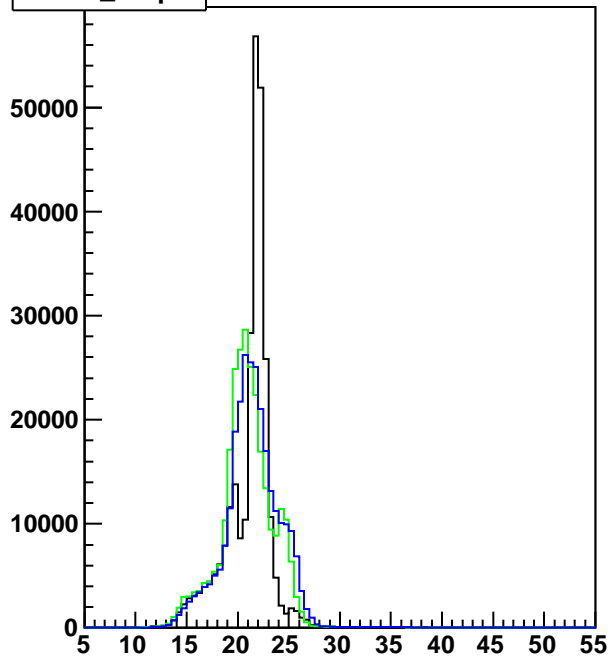
hmtdhitz_totm_strip12



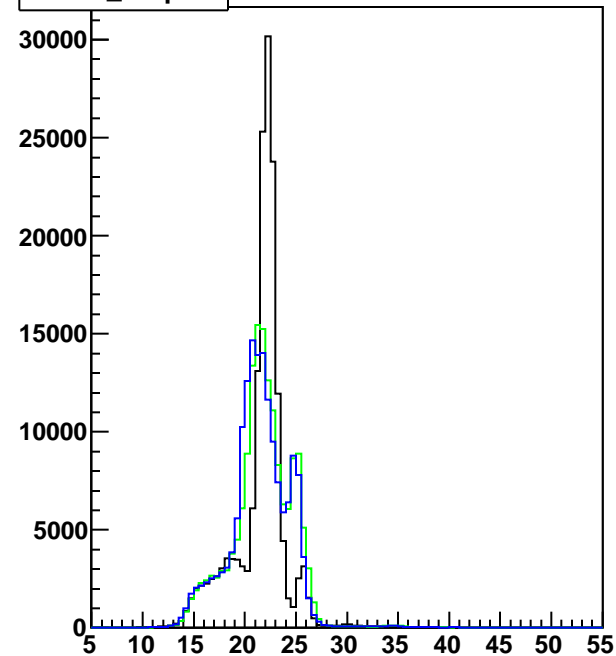
htotm_strip1



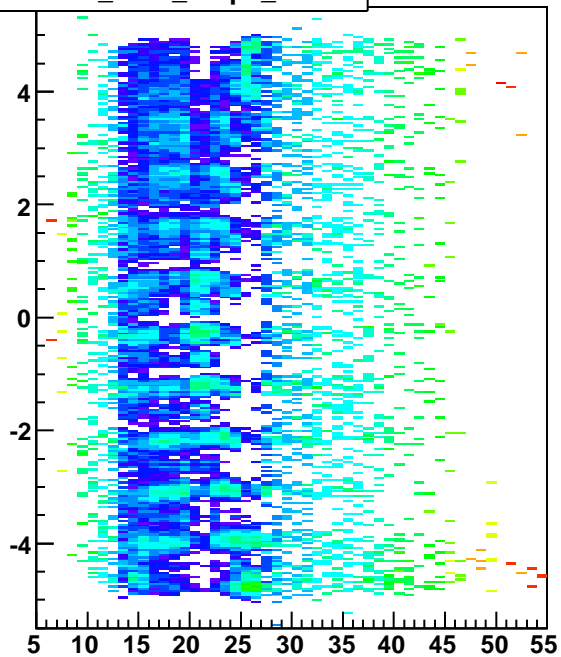
htotm_strip6



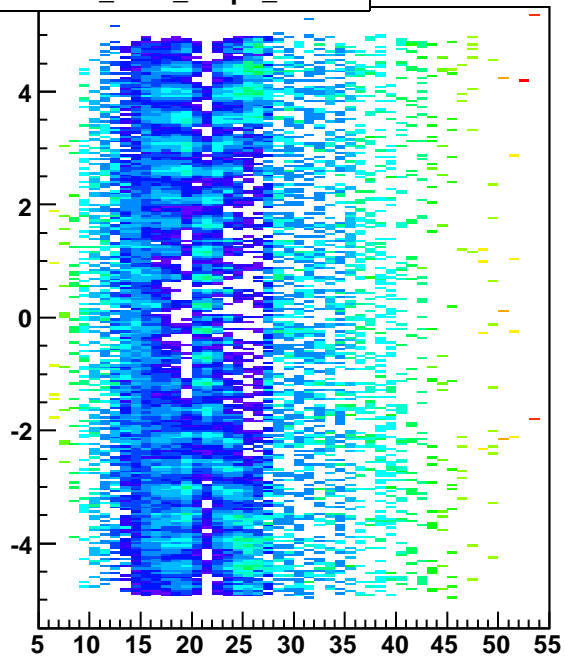
htotm_strip12



hmtdhitz_totm_strip1_norm



hmtdhitz_totm_strip6_norm



hmtdhitz_totm_strip12_norm

