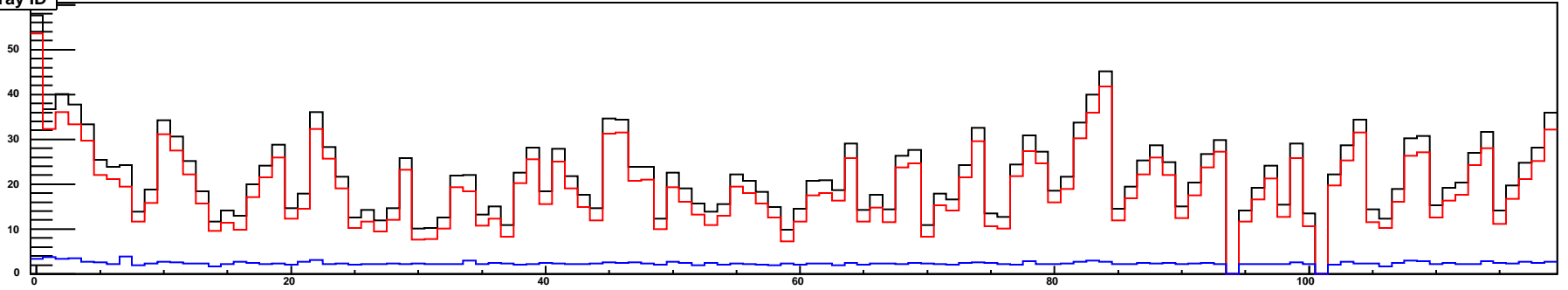
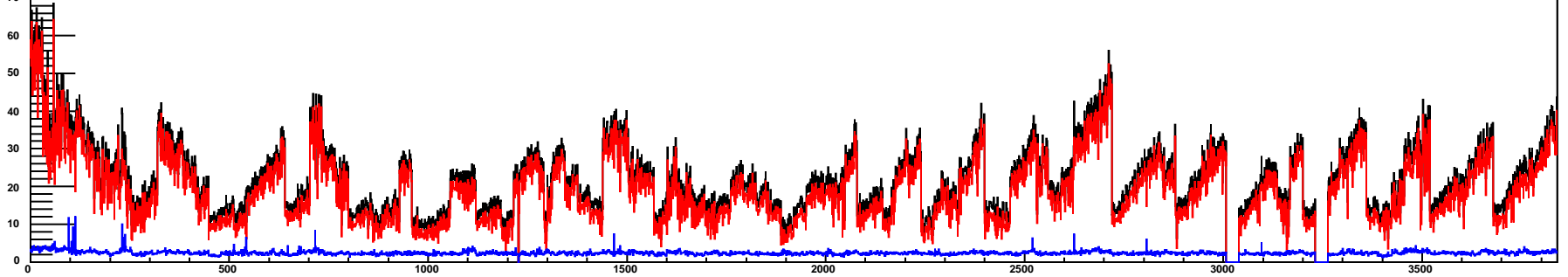


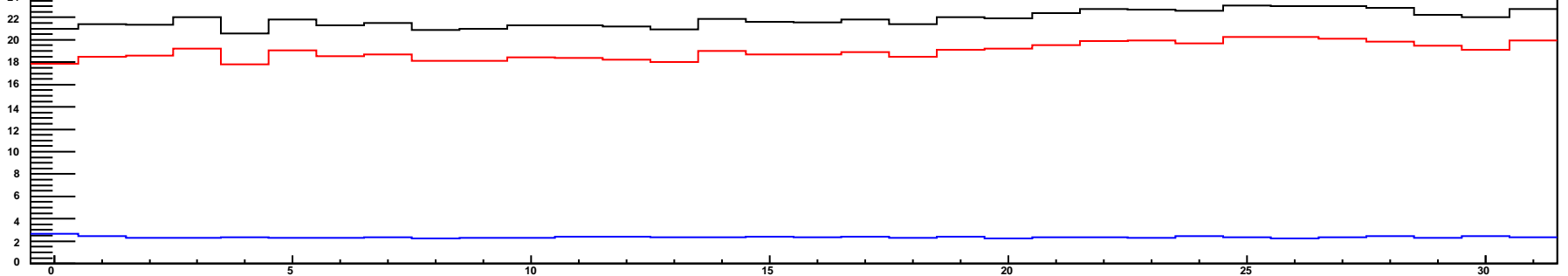
rate/cell by tray ID



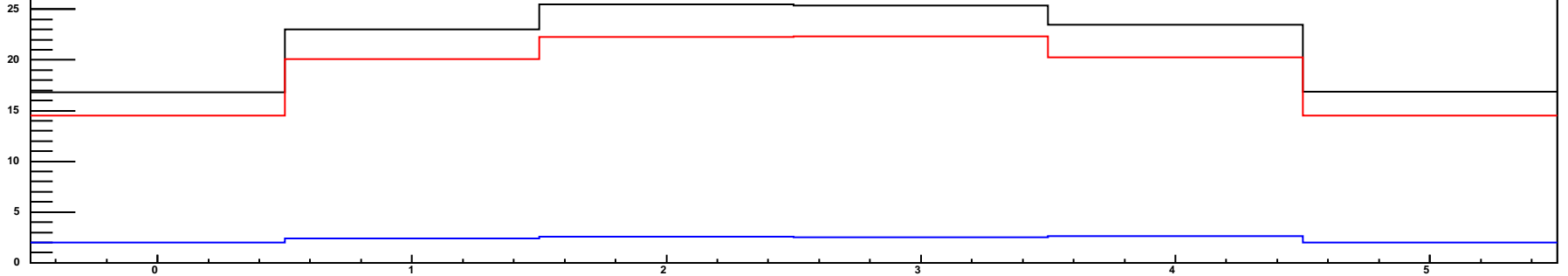
rate/cell by global module ID



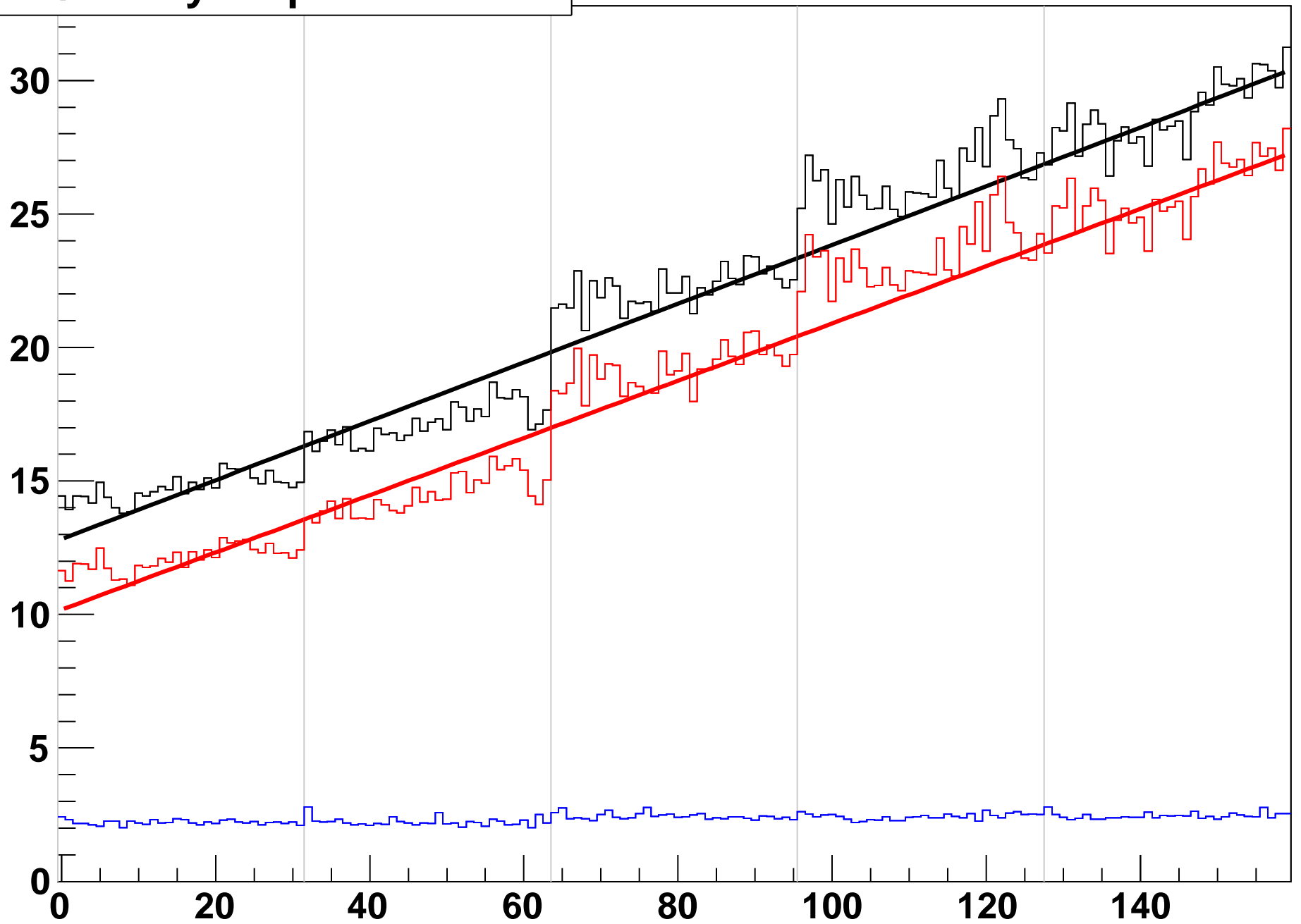
rate/cell by tray module ID



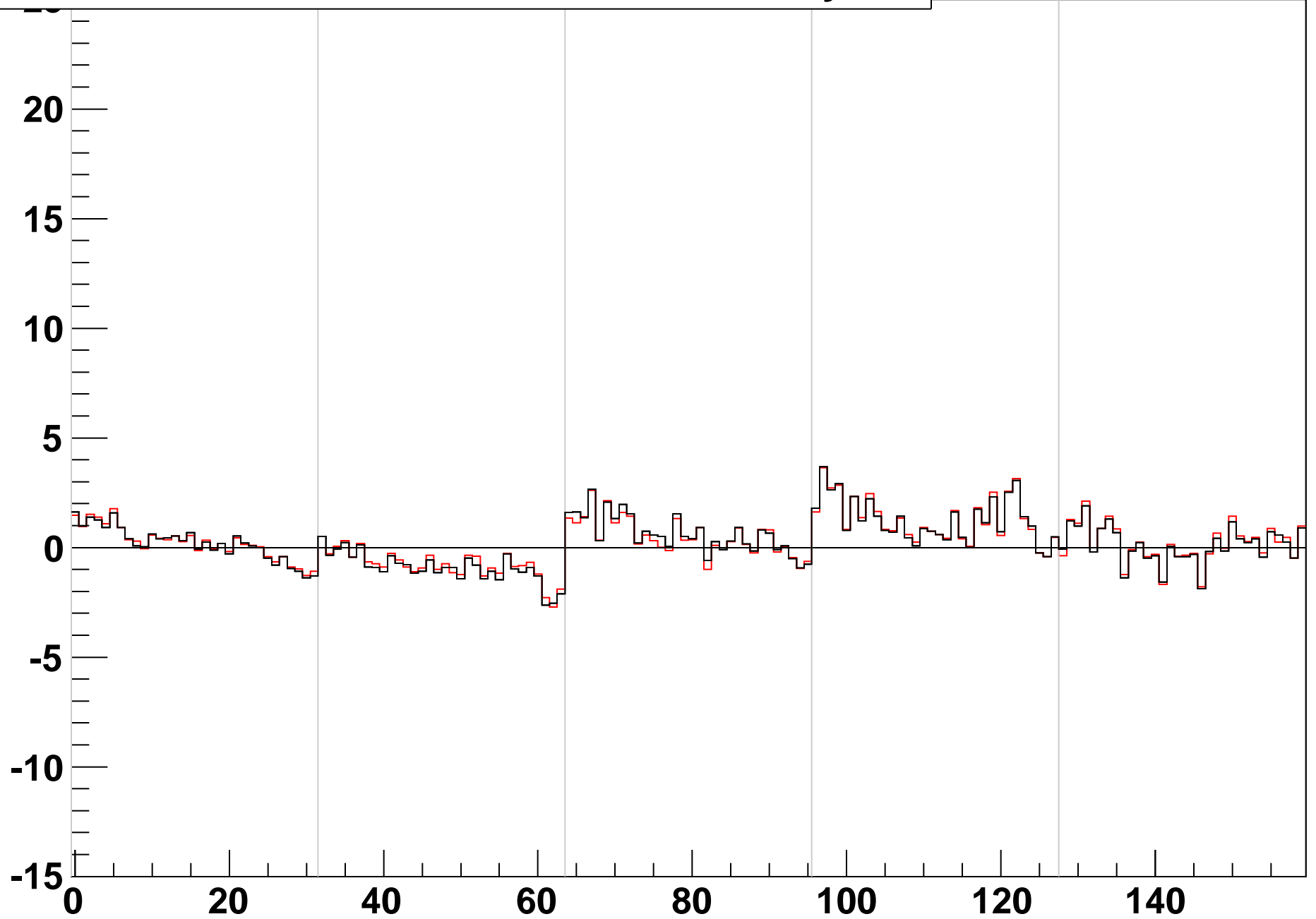
rate/cell by tray cell ID



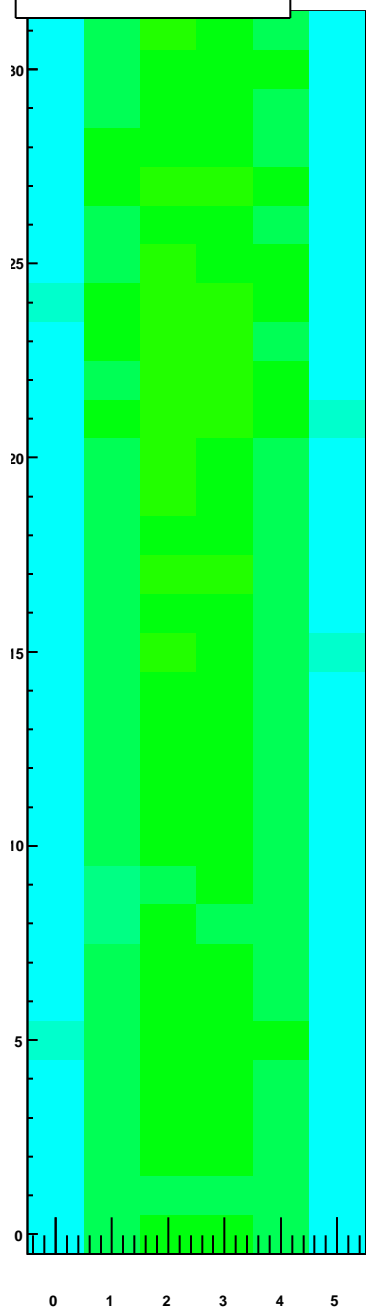
rate/cell by loop module ID



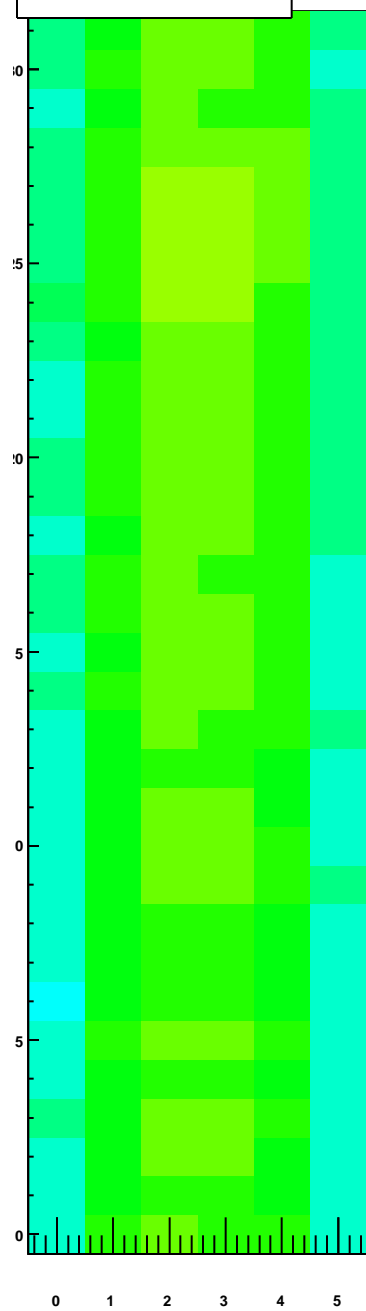
difference between noise rate and mid-tray fit



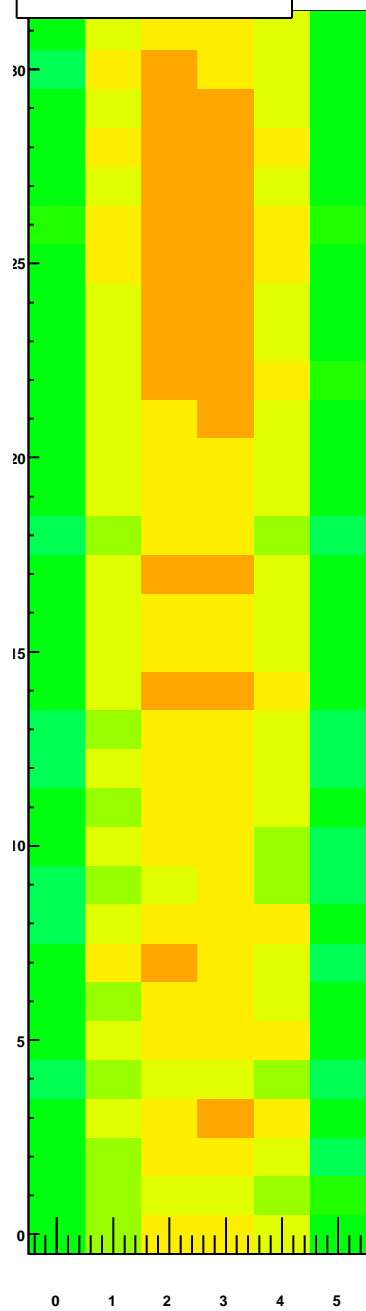
rate/cell by tray module ID, TrayIDinLoop=0



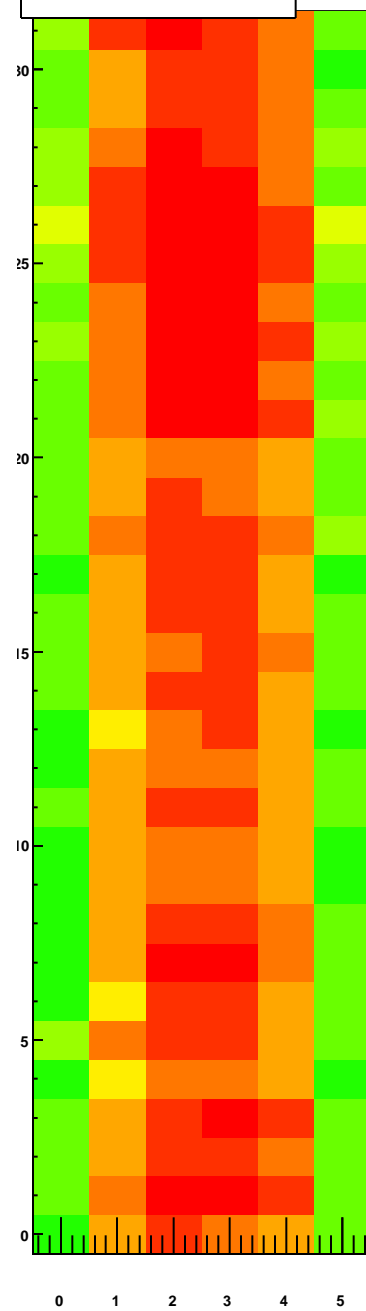
rate/cell by tray module ID, TrayIDinLoop=1



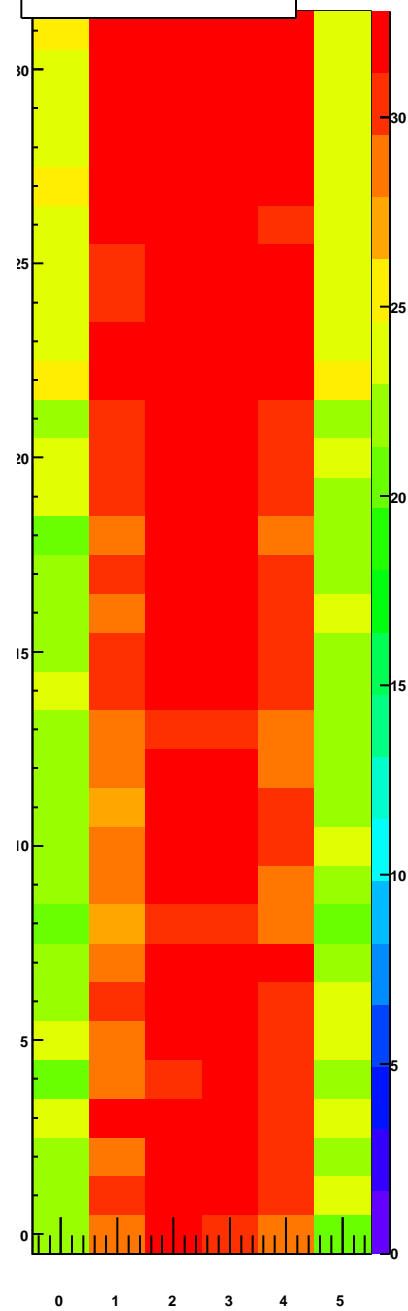
rate/cell by tray module ID, TrayIDinLoop=2



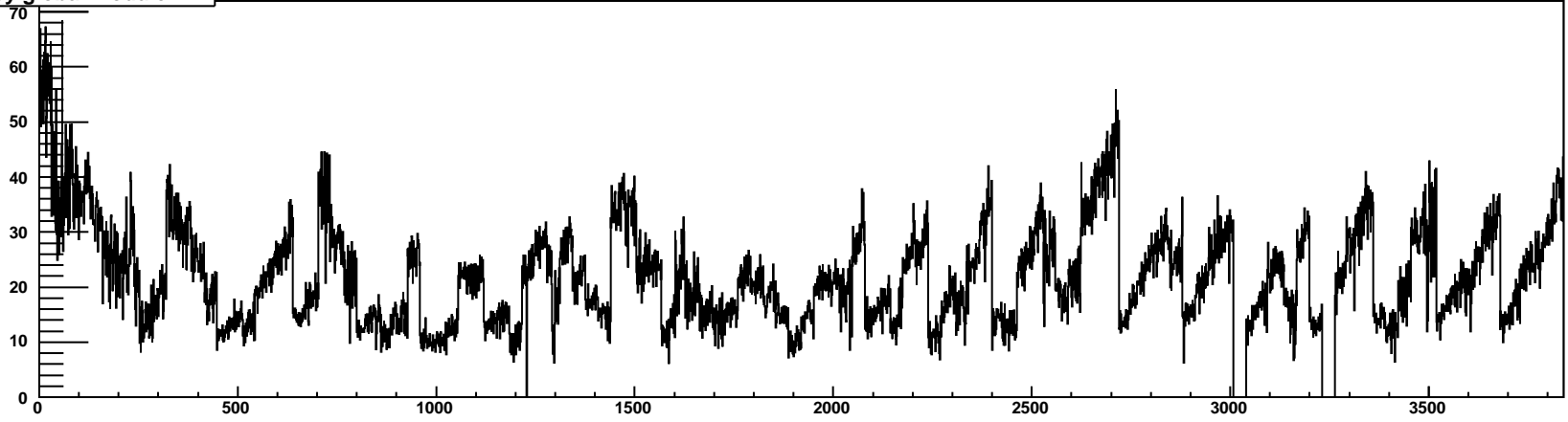
rate/cell by tray module ID, TrayIDinLoop=3



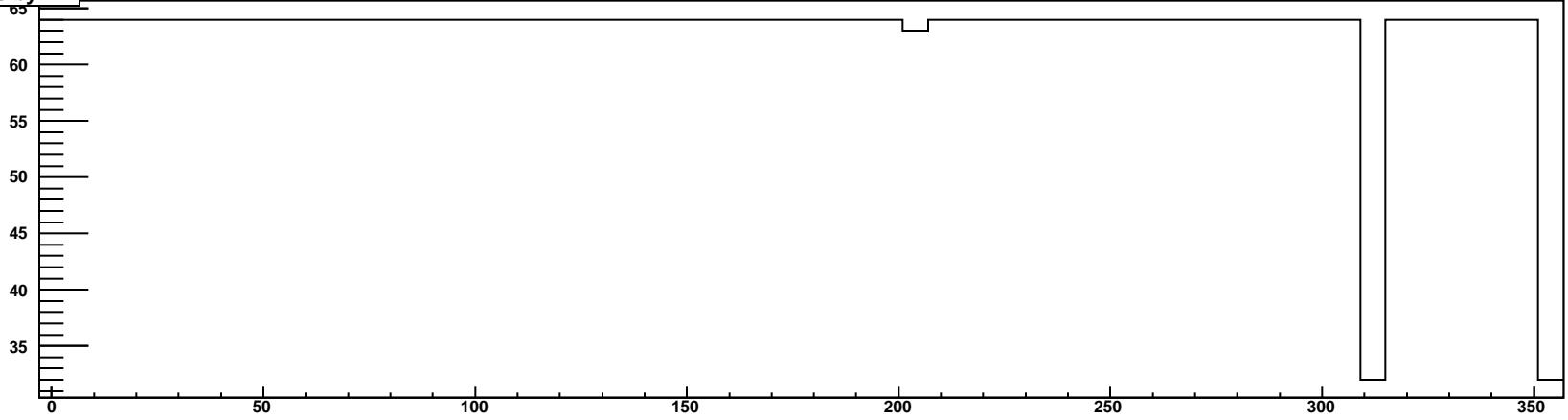
rate/cell by tray module ID, TrayIDinLoop=4



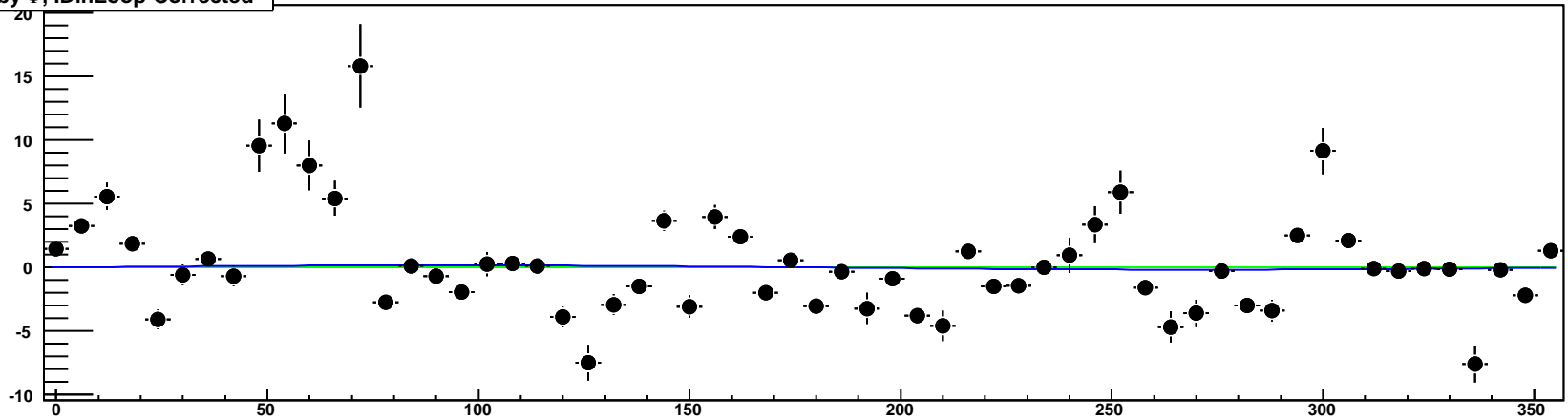
rate/cell by global module ID



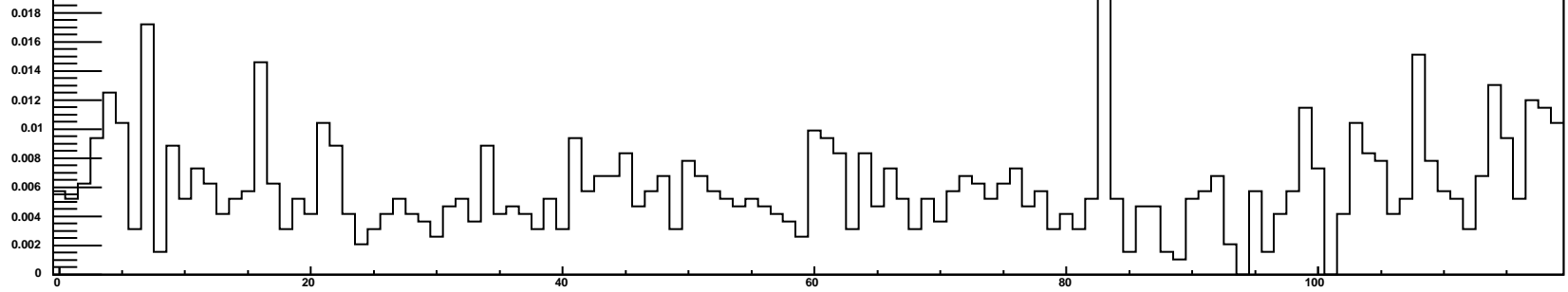
NModules by Φ



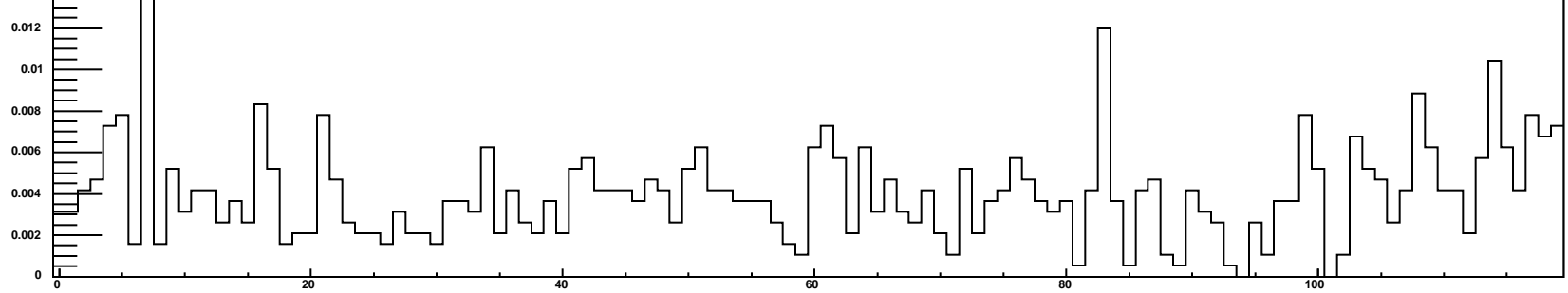
rate/cell by Φ , IDinLoop-Corrected



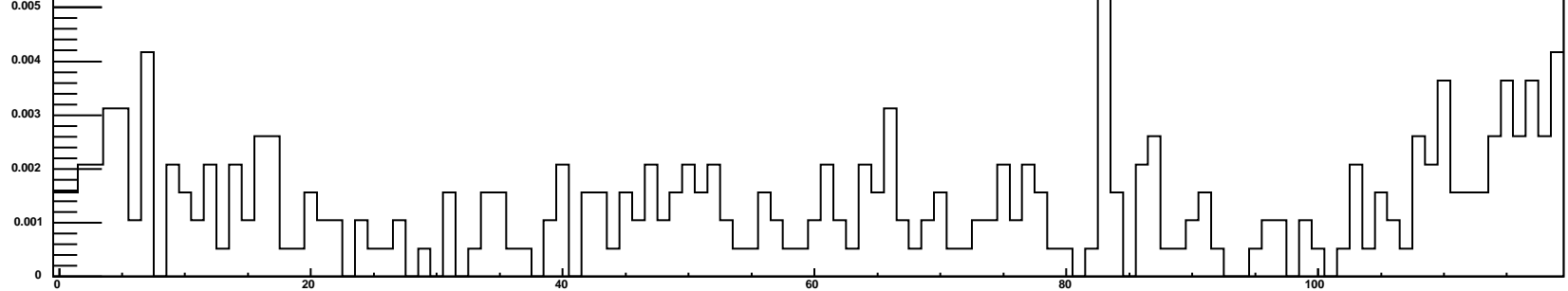
rate/cell by tray ID, nHits/tray/ev>25



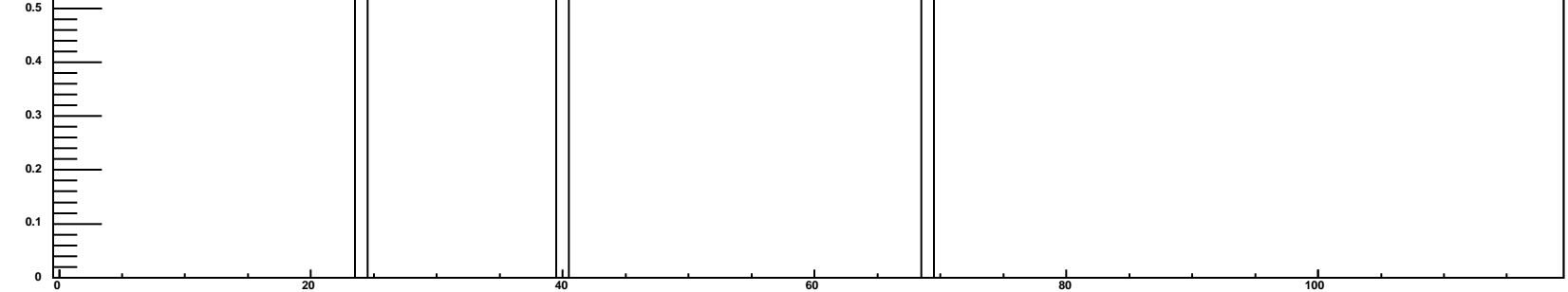
rate/cell by tray ID, nHits/tray/ev>50



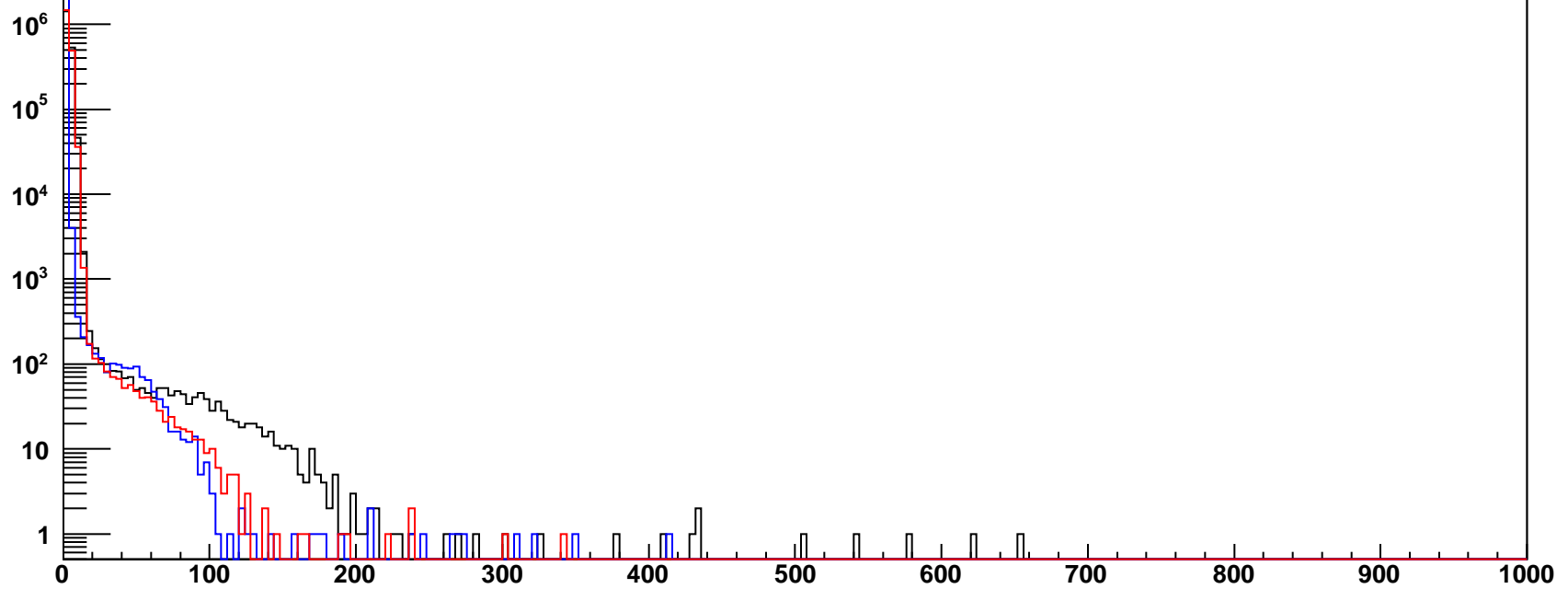
rate/cell by tray ID, nHits/tray/ev>100



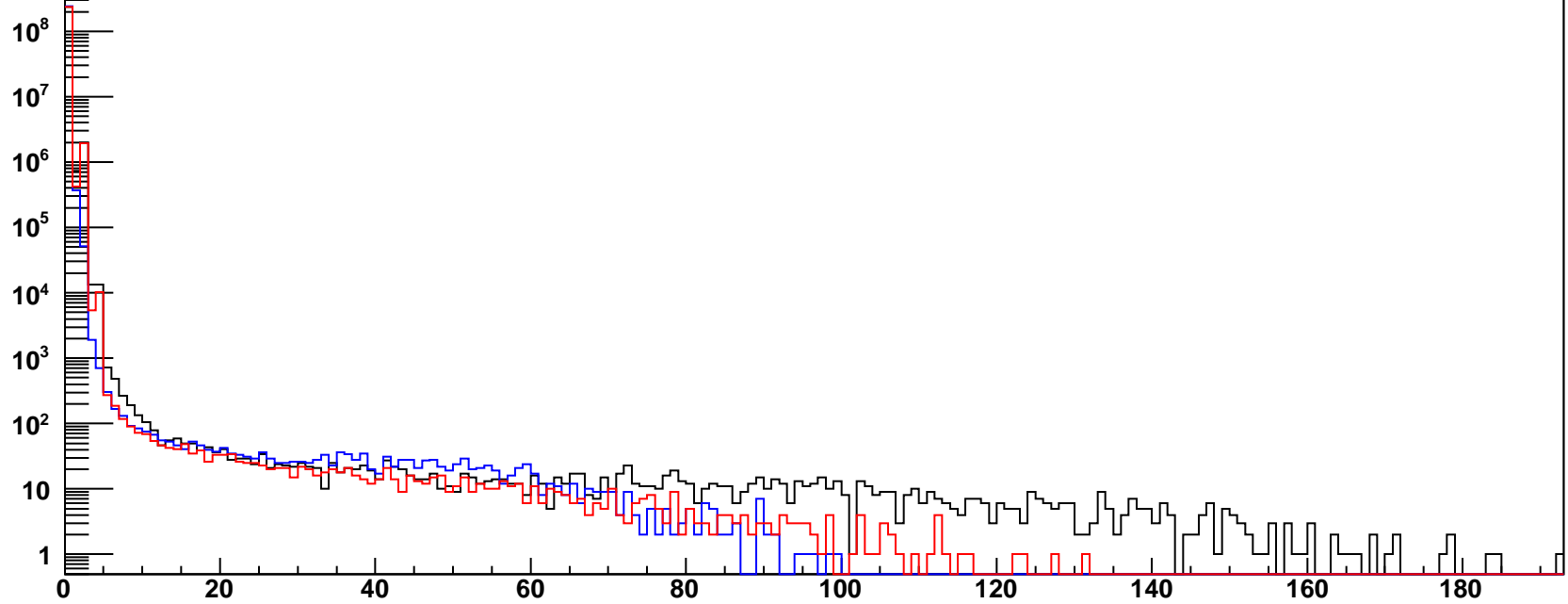
rate/cell by tray ID, nHits/tray/ev>190

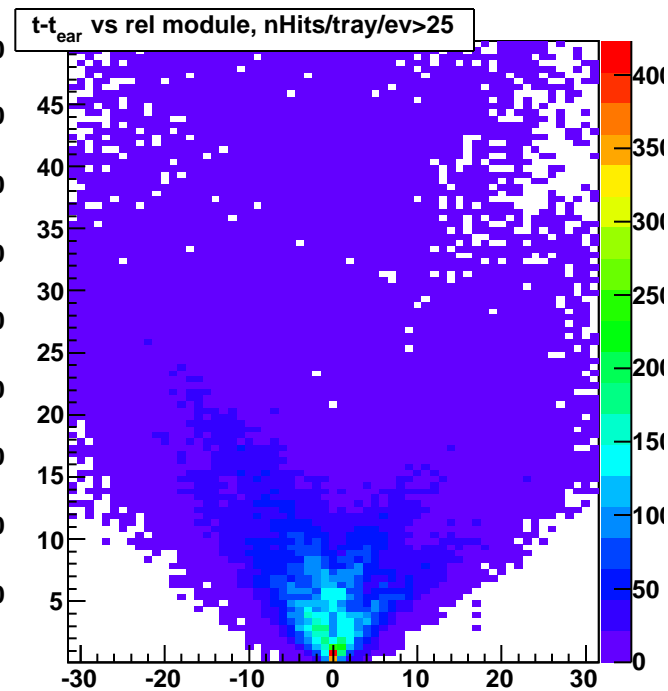
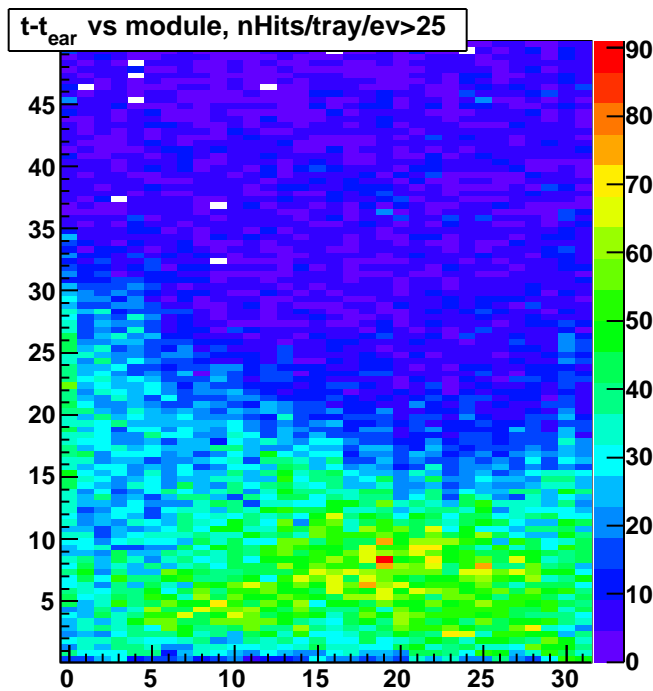
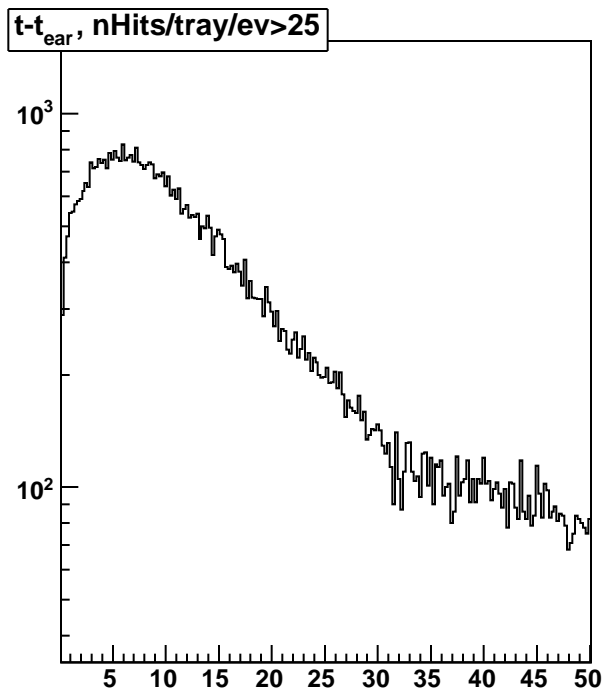
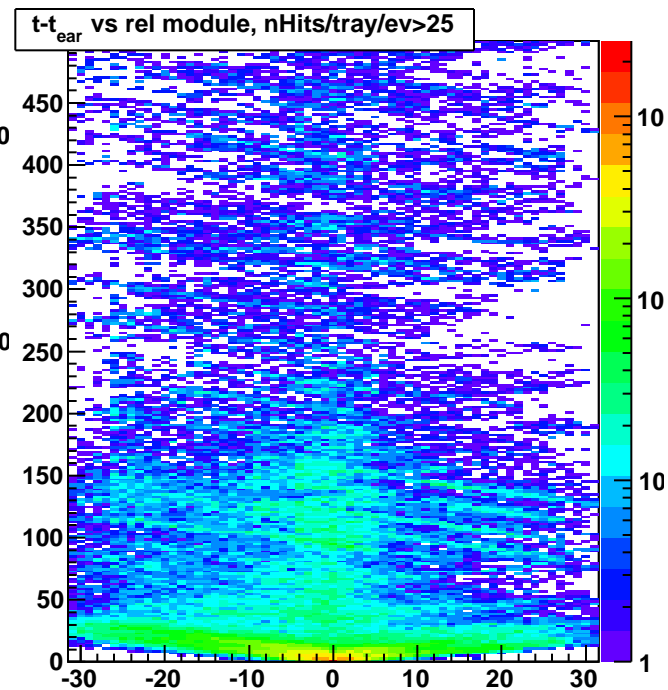
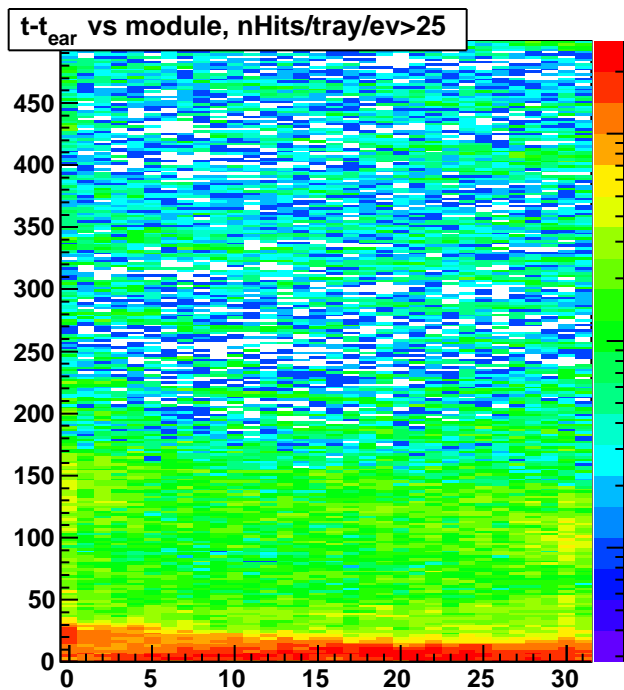
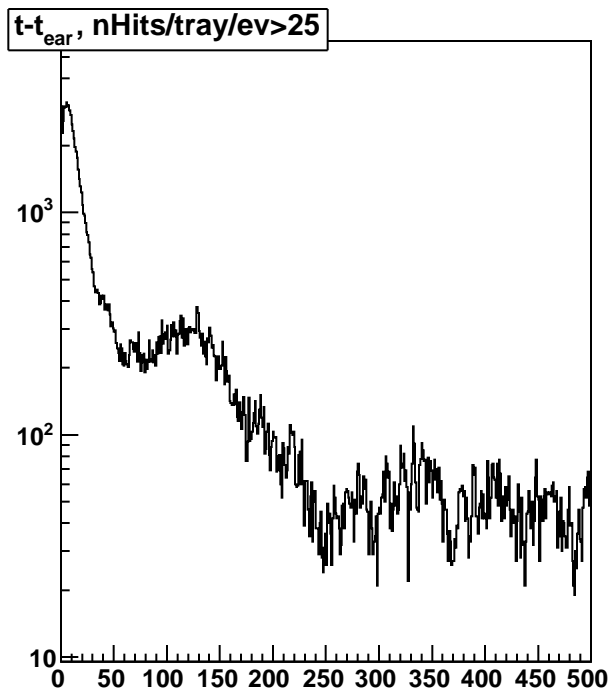


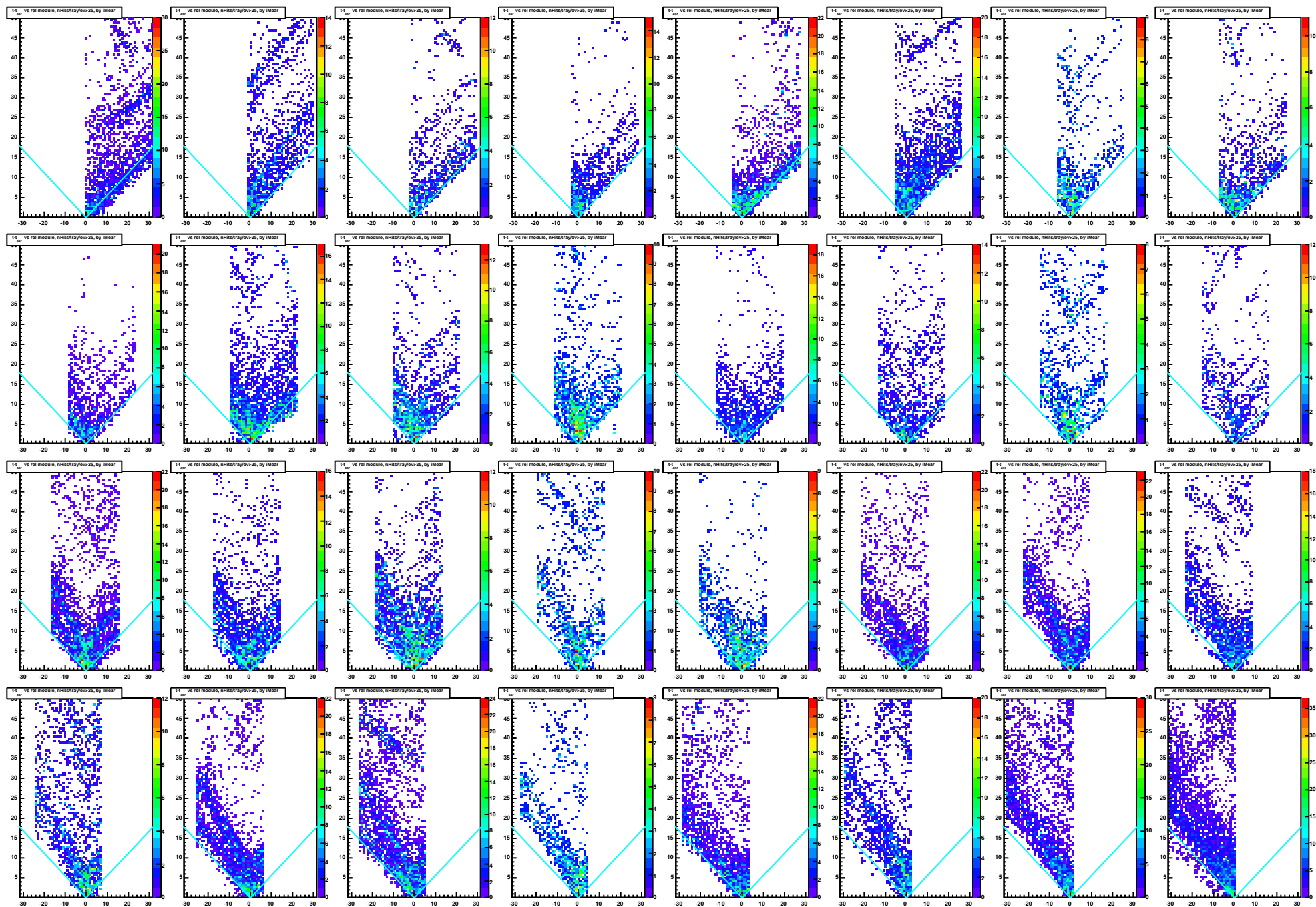
nHits/ev, ToT range

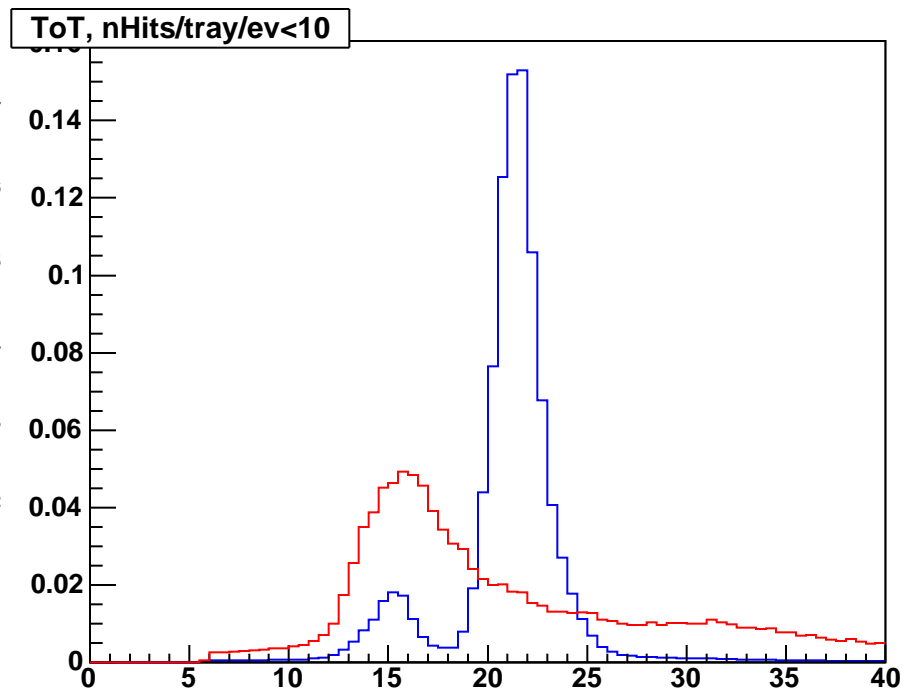
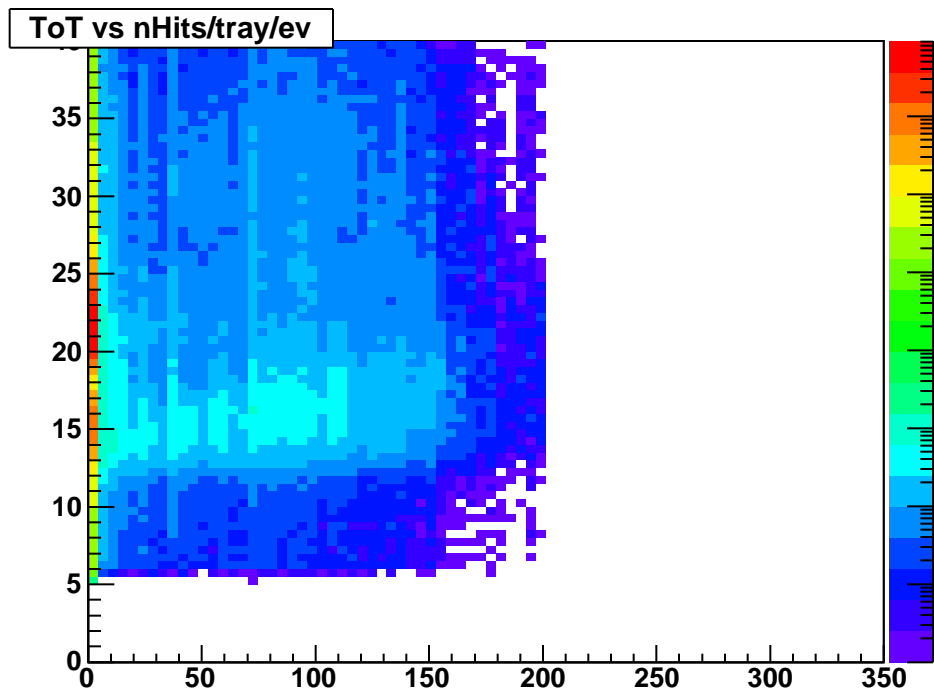
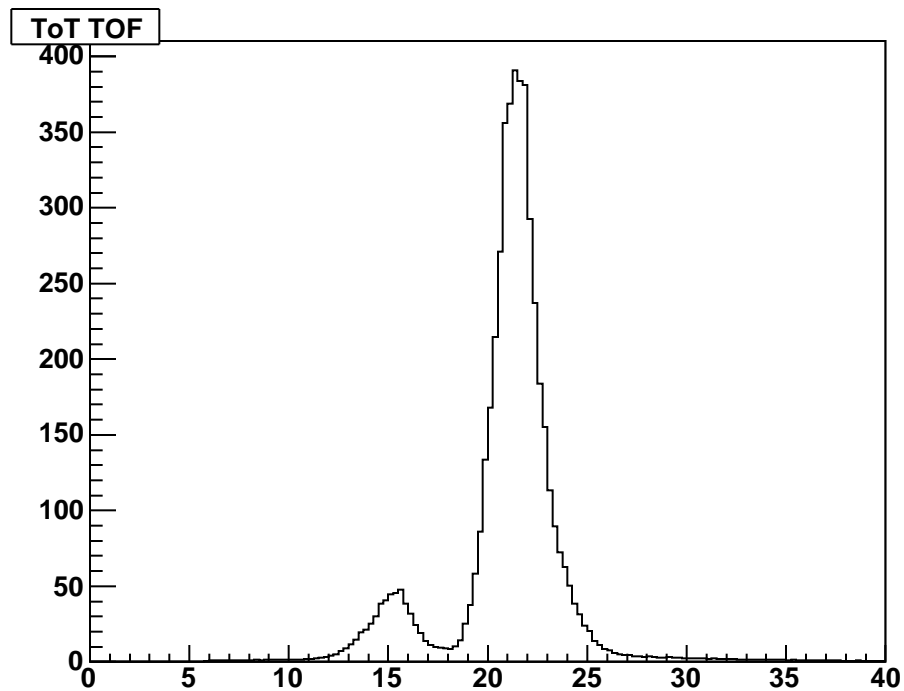
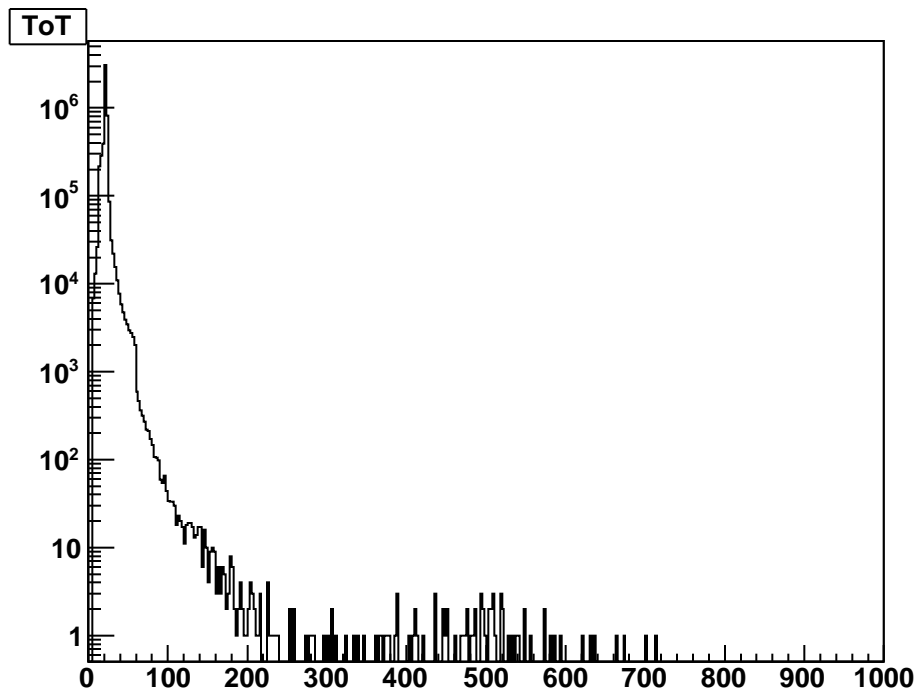


nHits/tray/ev, ToT range



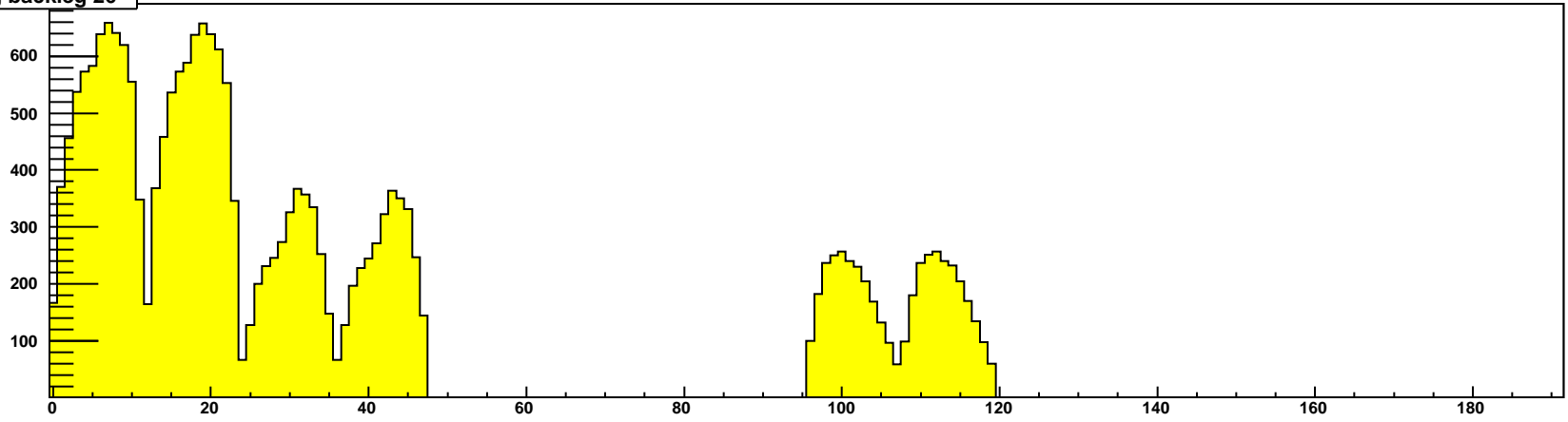




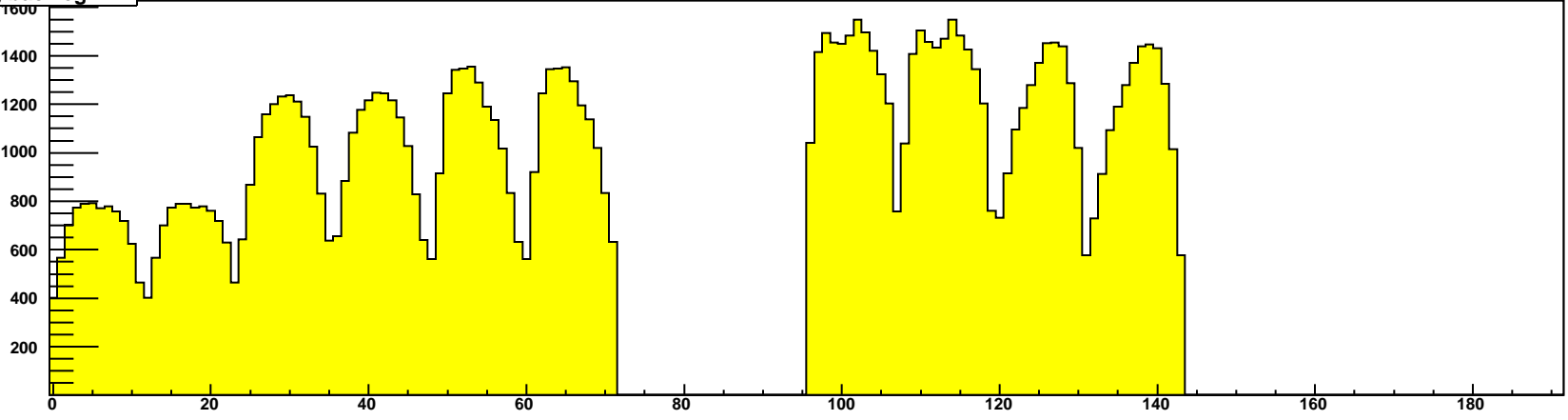




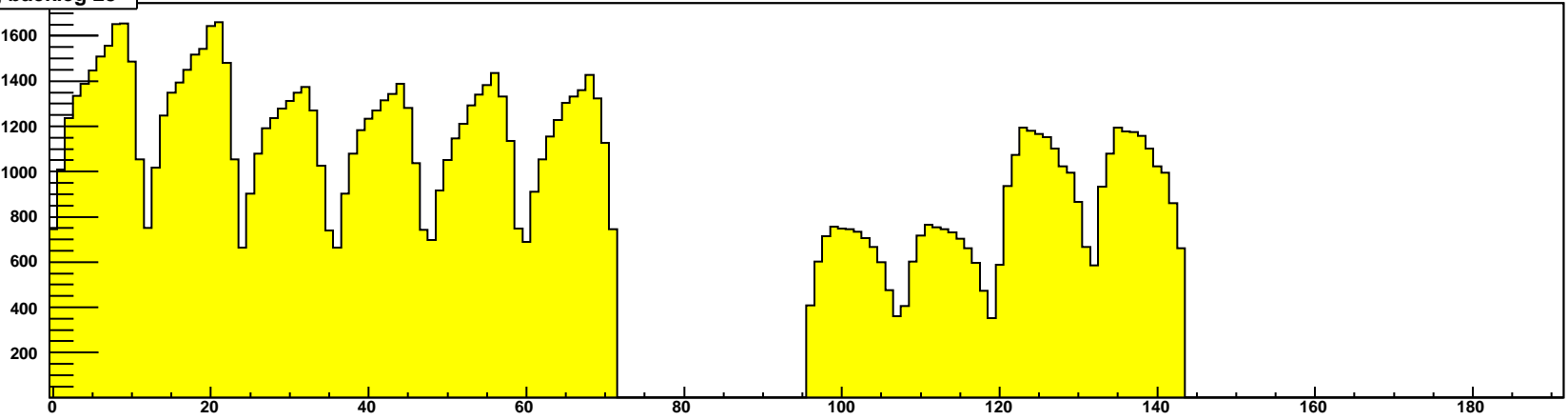
mtd cell, backleg 26

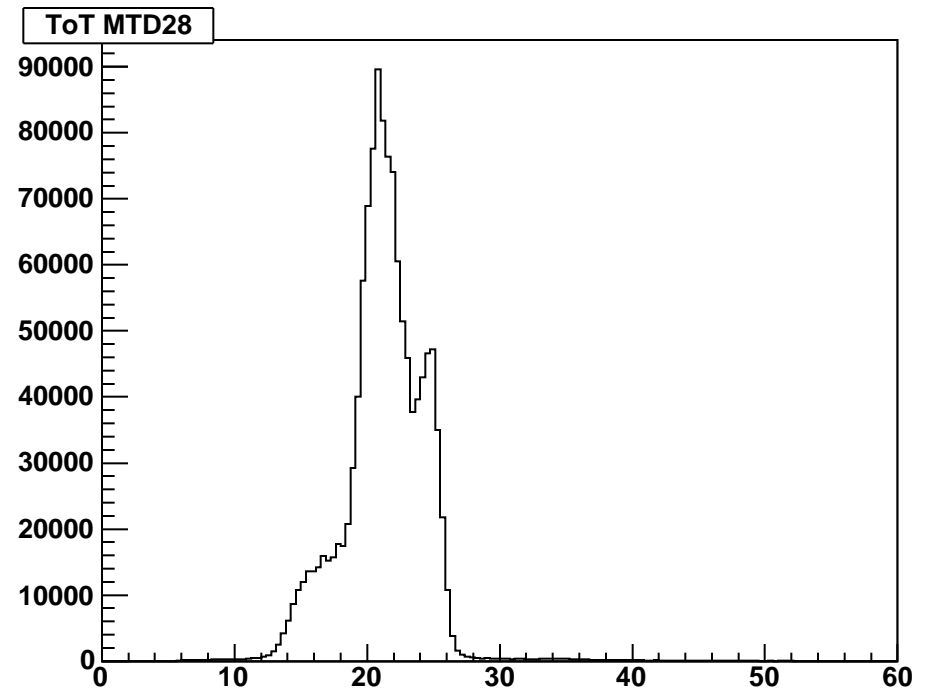
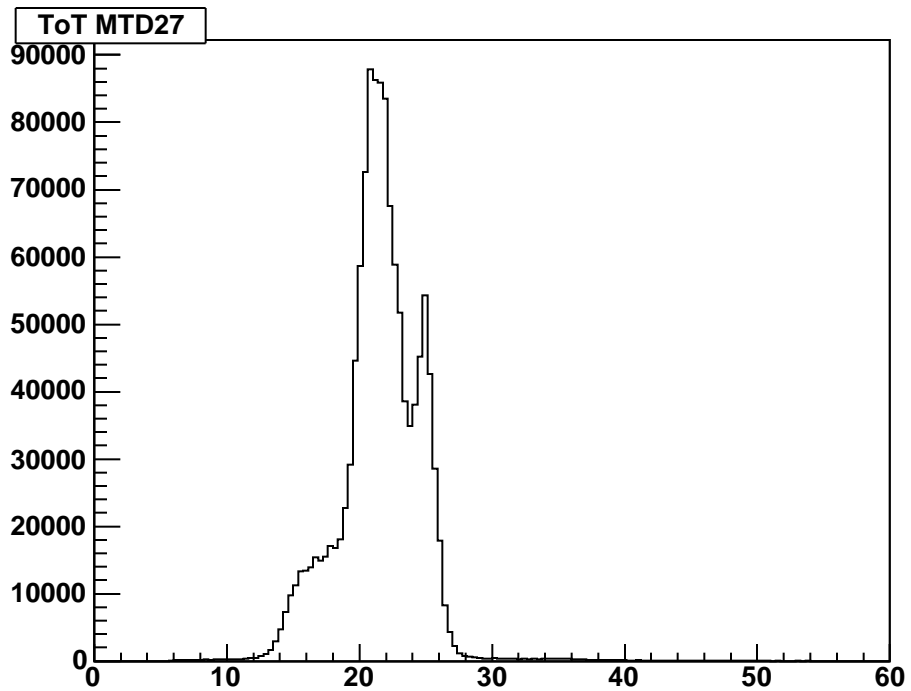
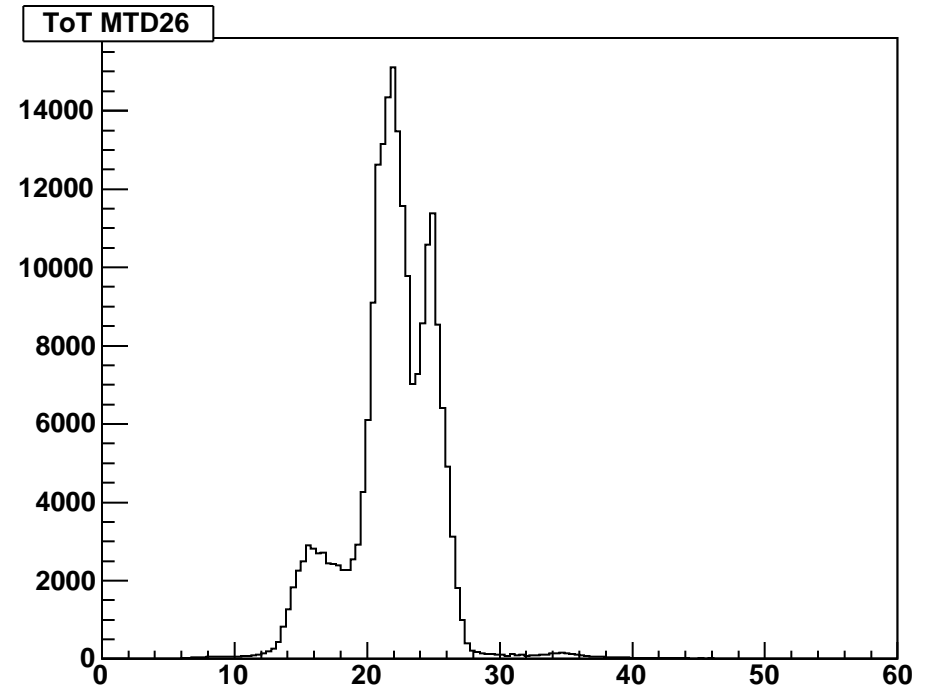
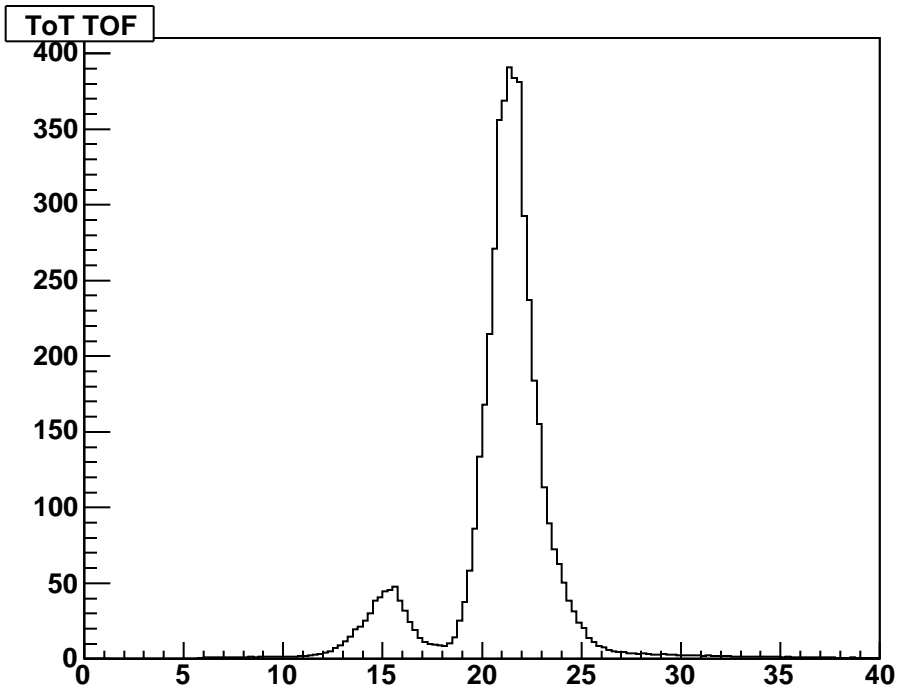


mtd cell, backleg 27

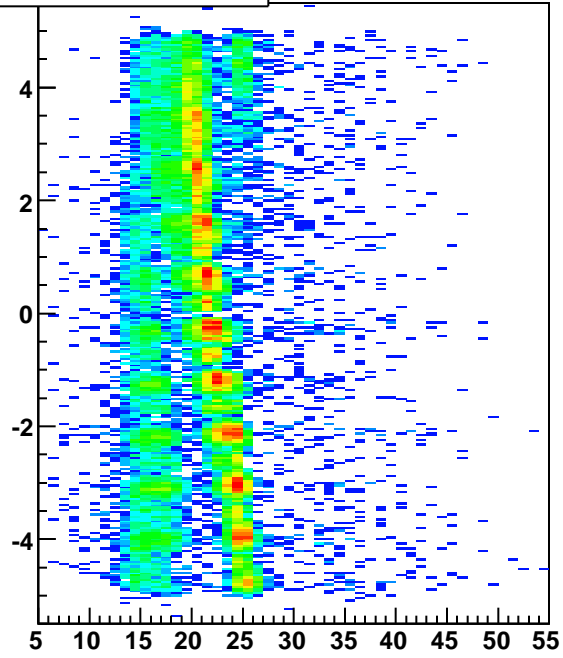


mtd cell, backleg 28

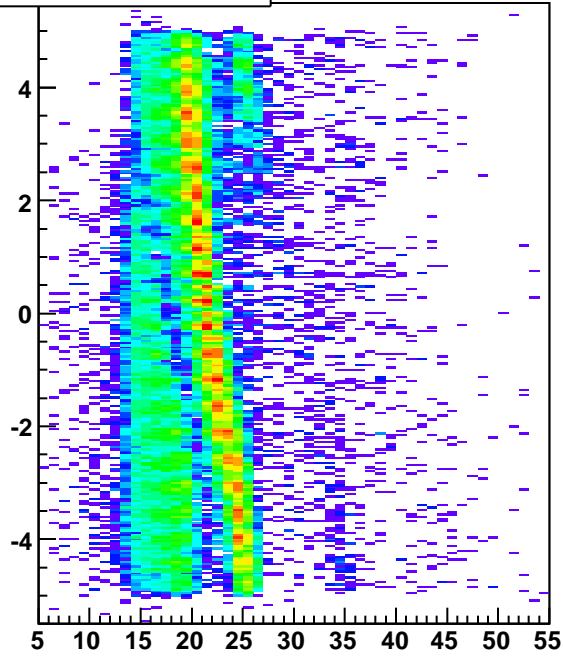




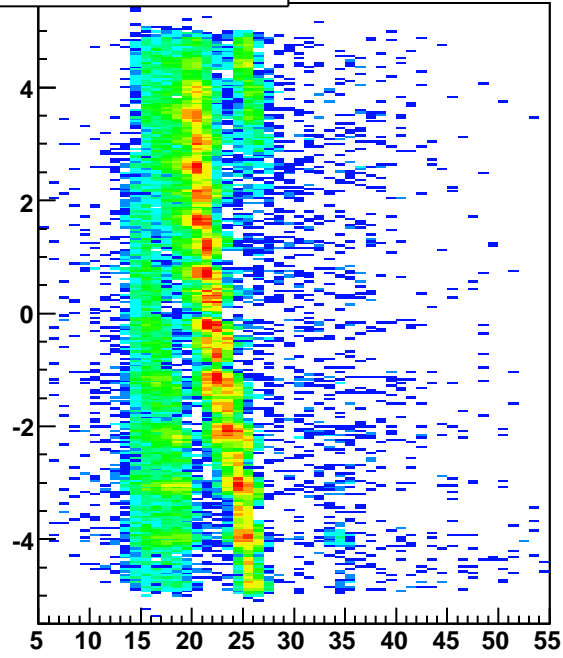
hmtdhitz_tota_strip1



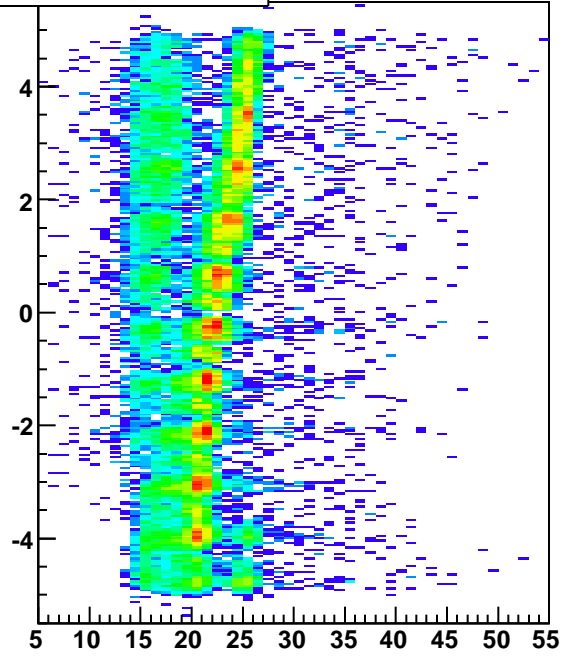
hmtdhitz_tota_strip6



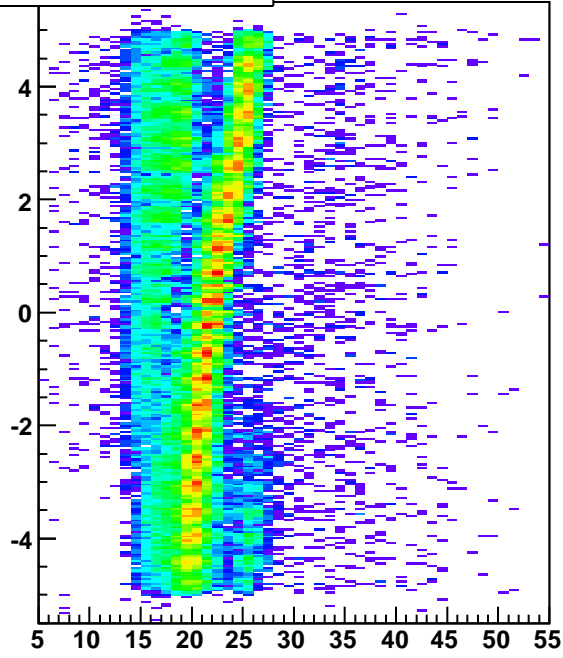
hmtdhitz_tota_strip12



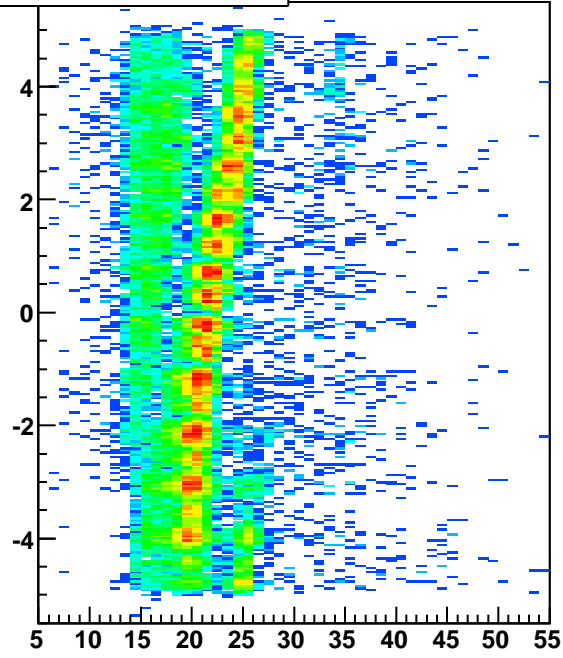
hmtdhitz_totb_strip1

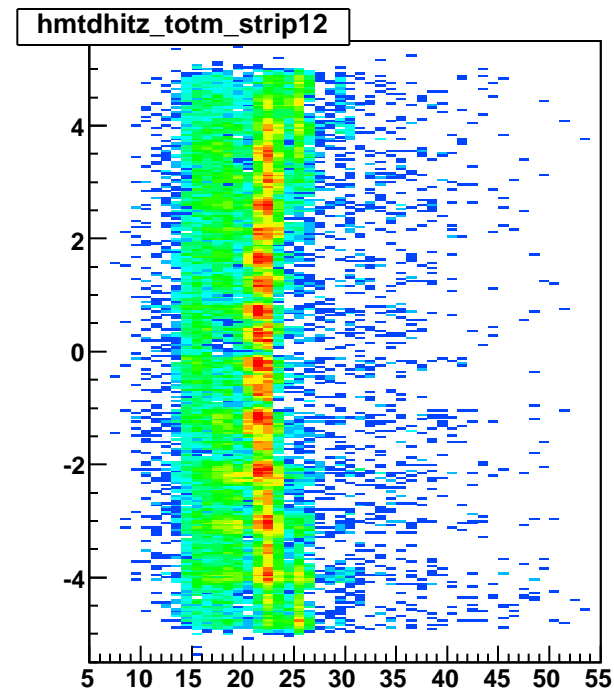
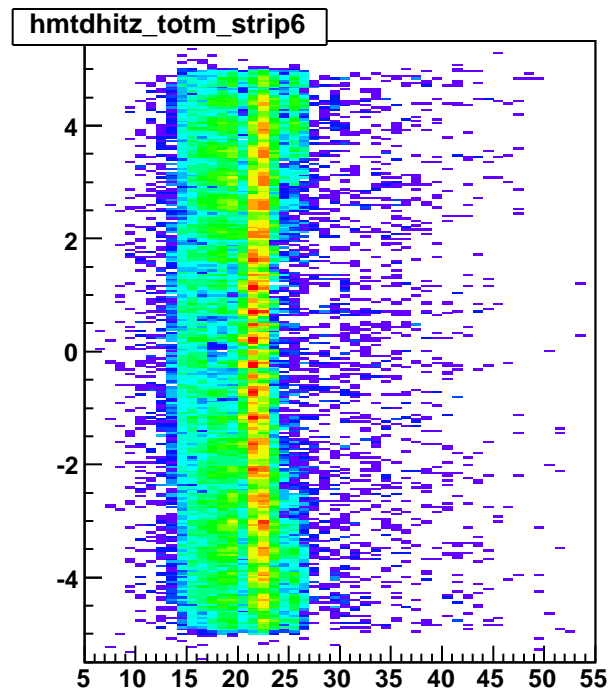
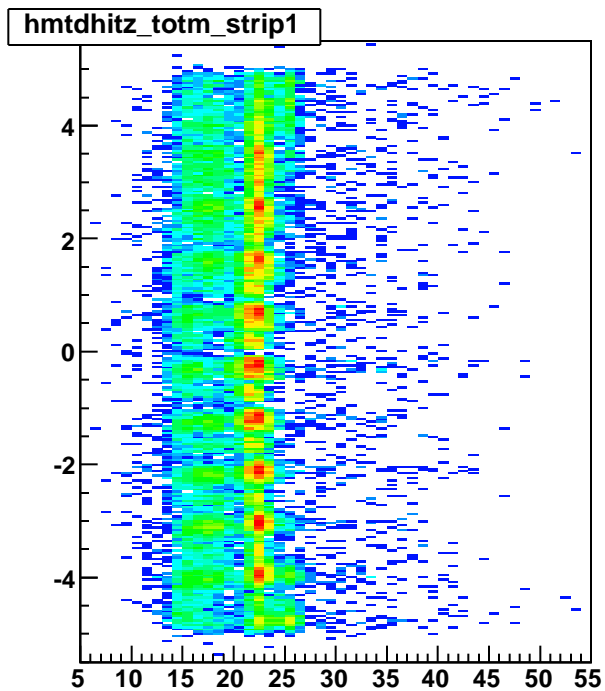
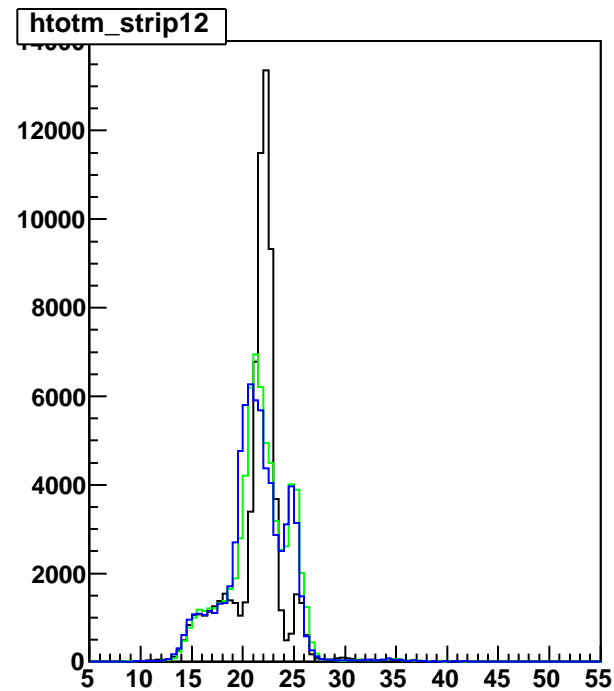
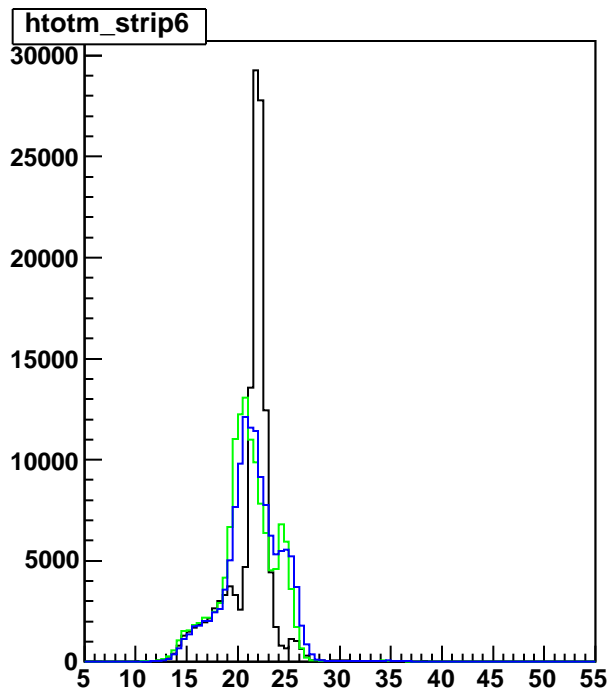
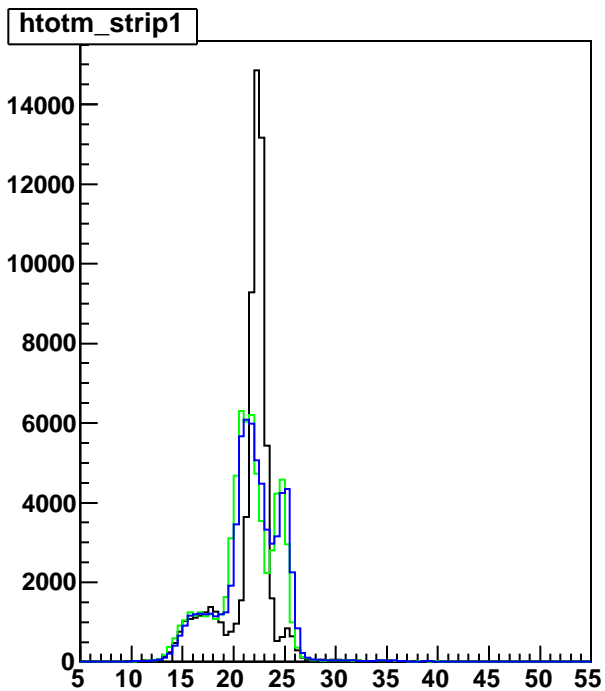


hmtdhitz_totb_strip6

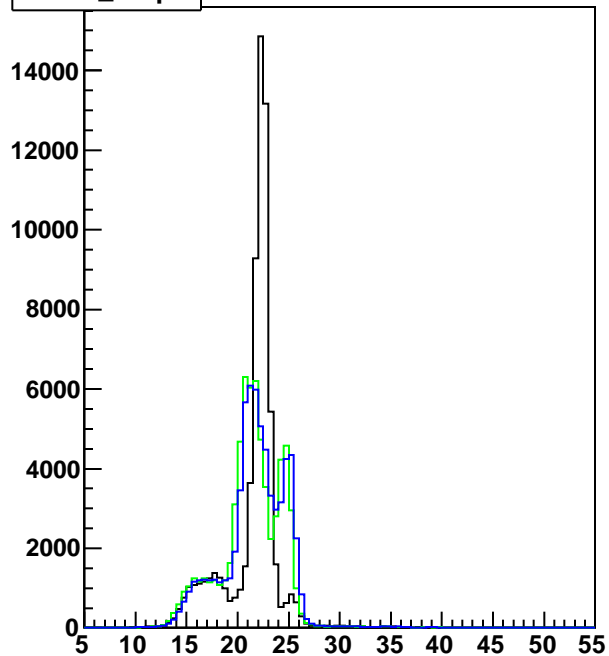


hmtdhitz_totb_strip12

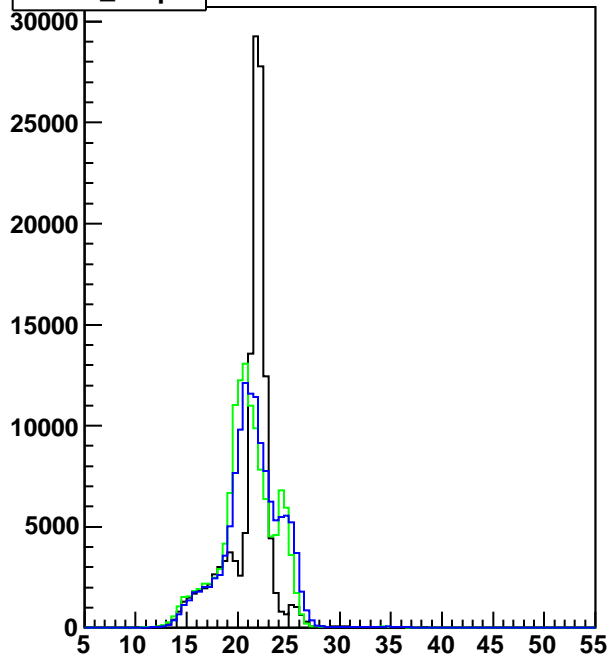




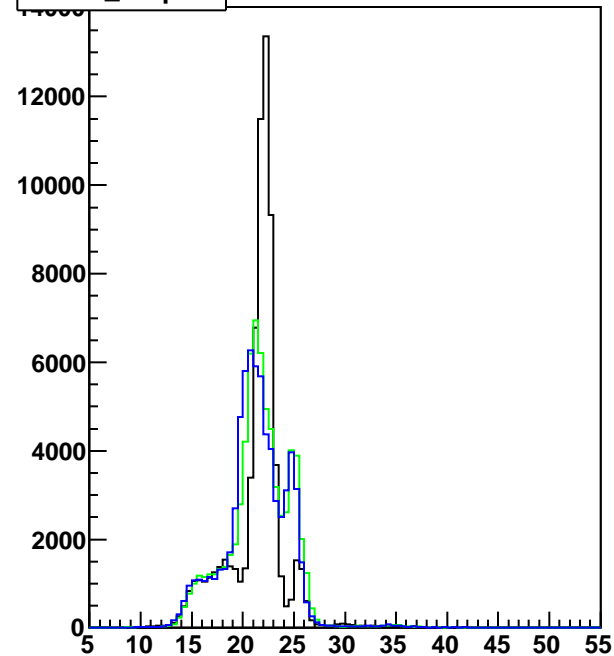
htotm_strip1



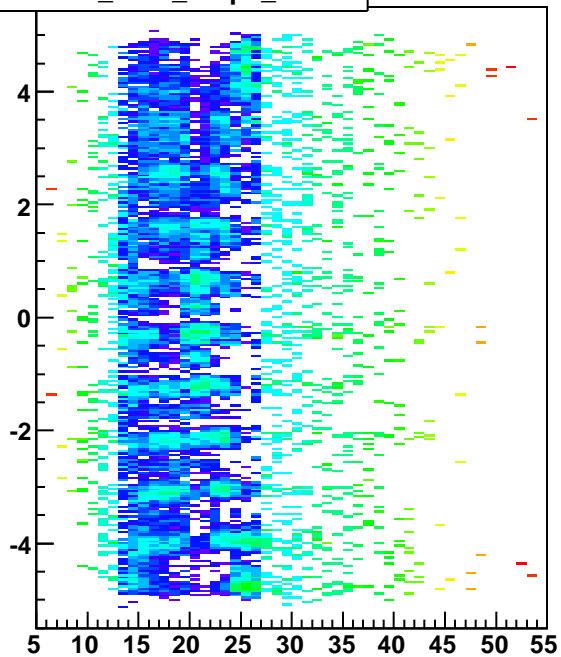
htotm_strip6



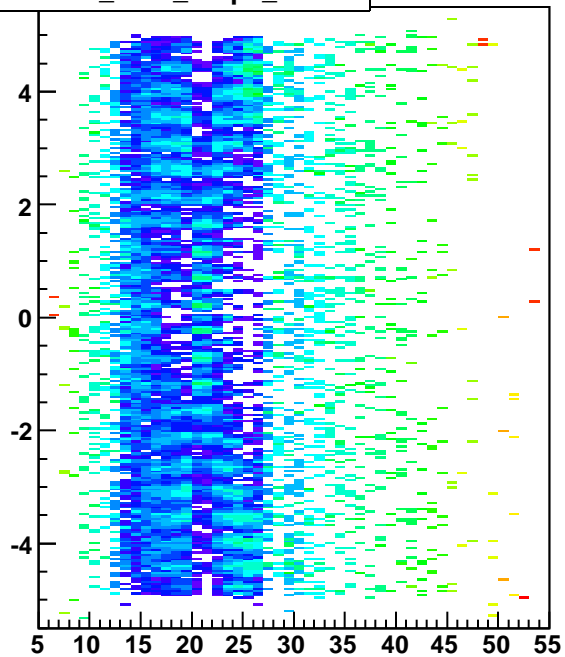
htotm_strip12



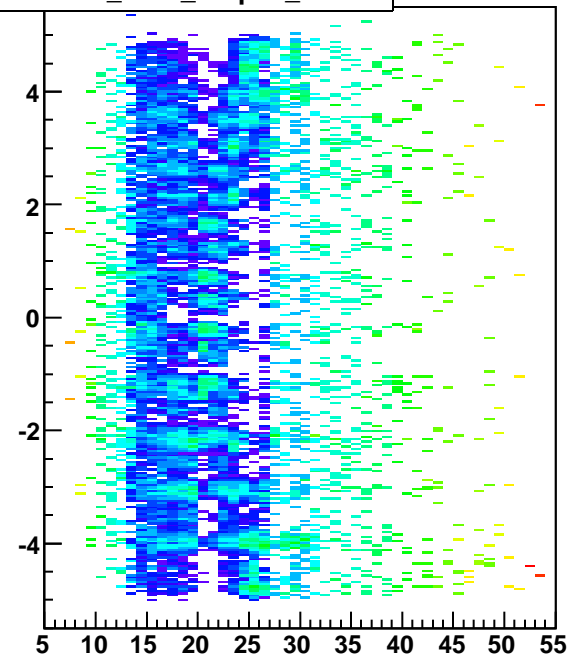
hmtdhitz_totm_strip1_norm



hmtdhitz_totm_strip6_norm



hmtdhitz_totm_strip12_norm



htotm_strip

